

# LUOSTON VÄÄRTIN KAMMI

[www.vaartinkammi.com](http://www.vaartinkammi.com)



Welcome to Luosto and  
Luosto Väärtin Kammi



# LUOSTON VÄÄRTIN KAMMI

[www.vaartinkammi.com](http://www.vaartinkammi.com)



## Keys to the Väärtin Kammi

When you arrive at the cottage, you will find the keys in the key box.

The key box is located on the right side of the main entrance.

Open the lid of the box and turn the code, press the buttons on the sides and the door will open.

Keep the keys in a box when you are not at the cottage

When you leave the cottage, be sure to return the key to the box.

Always remember to shuffle the key code when you put the key in the box.

If there is a problem with the keys, call Jari, 050-5599813 or Ari, 050-5023612



**Be sure to lock all doors whenever the cottage is left empty!**

**Test the lock**

# LUOSTON VÄÄRTIN KAMMI

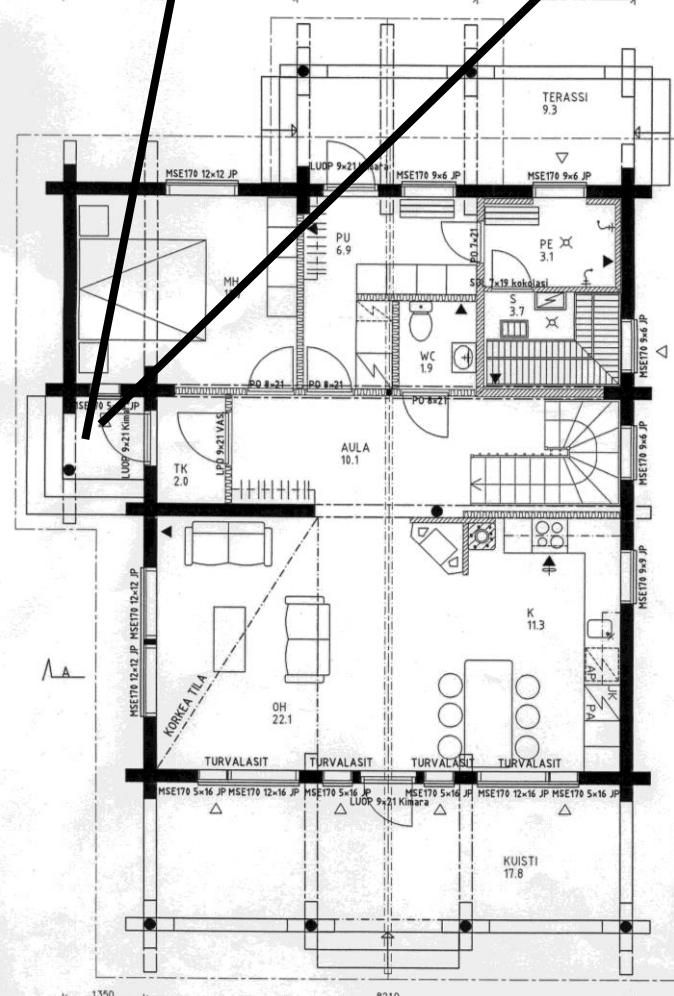
www.vaartinkammi.com



**POISSA** = not present

**KOTONA** = home

**Piha Valaistus** = lightning outside



When you arrive at the cottage, turn on the switch at HOME from the hallway.

The underfloor heating in the cottage raises the temperature by 5 degrees.

When you put on the sauna, the underfloor heating is switched off.

When you leave the cottage after your holiday, turn the selector to the POISSA position, the temperature of the cottage will drop by 5 degrees.

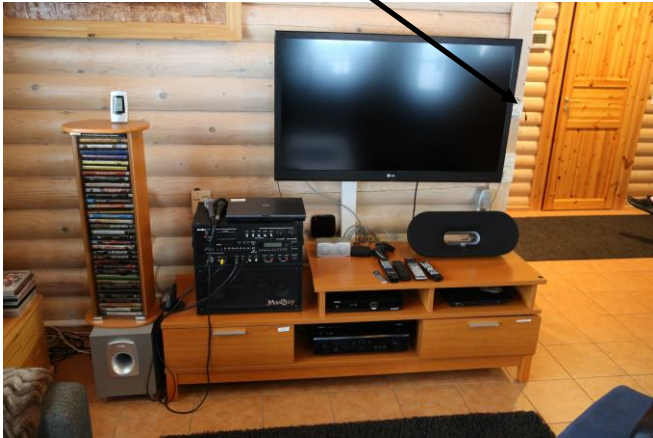
**Be sure to lock all doors whenever the cottage is left empty!**

**Test the lock**

# LUOSTON VÄÄRTIN KAMMI

[www.vaartinkammi.com](http://www.vaartinkammi.com)

## Underfloor heating adjustments



The underfloor heating in the cottage is set to its correct value, **do not adjust the underfloor heating** (value at level 3.5 - 4.5)

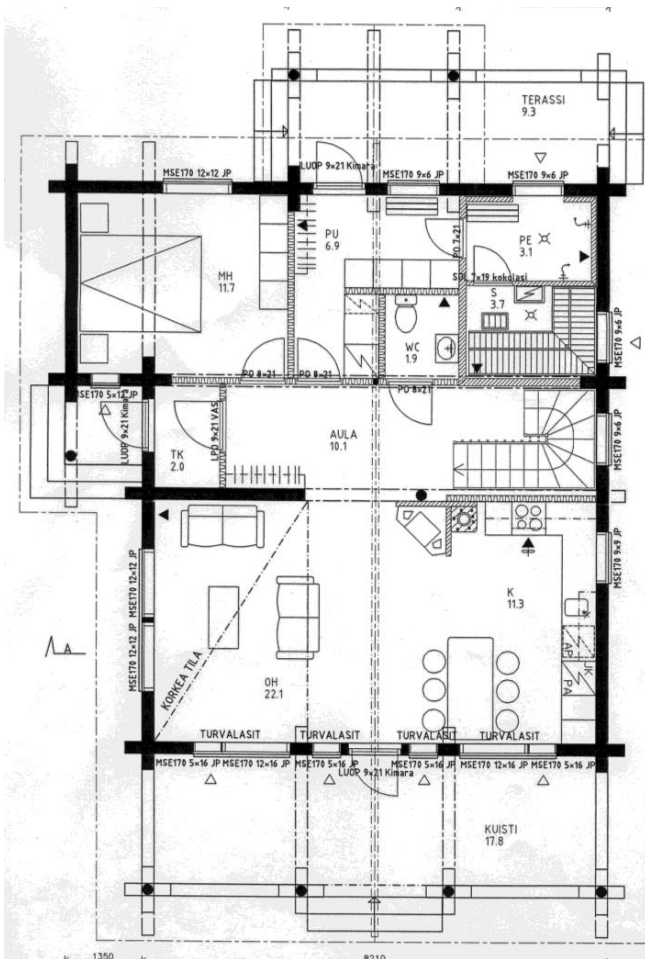
The heat source downstairs is underfloor heating. The floor tile is mainly heated by night electricity.

**When the sauna heater is switched on, the floor heat is switched off.** If the sauna is on for a long time, the temperature in the cottage may temporarily drop.

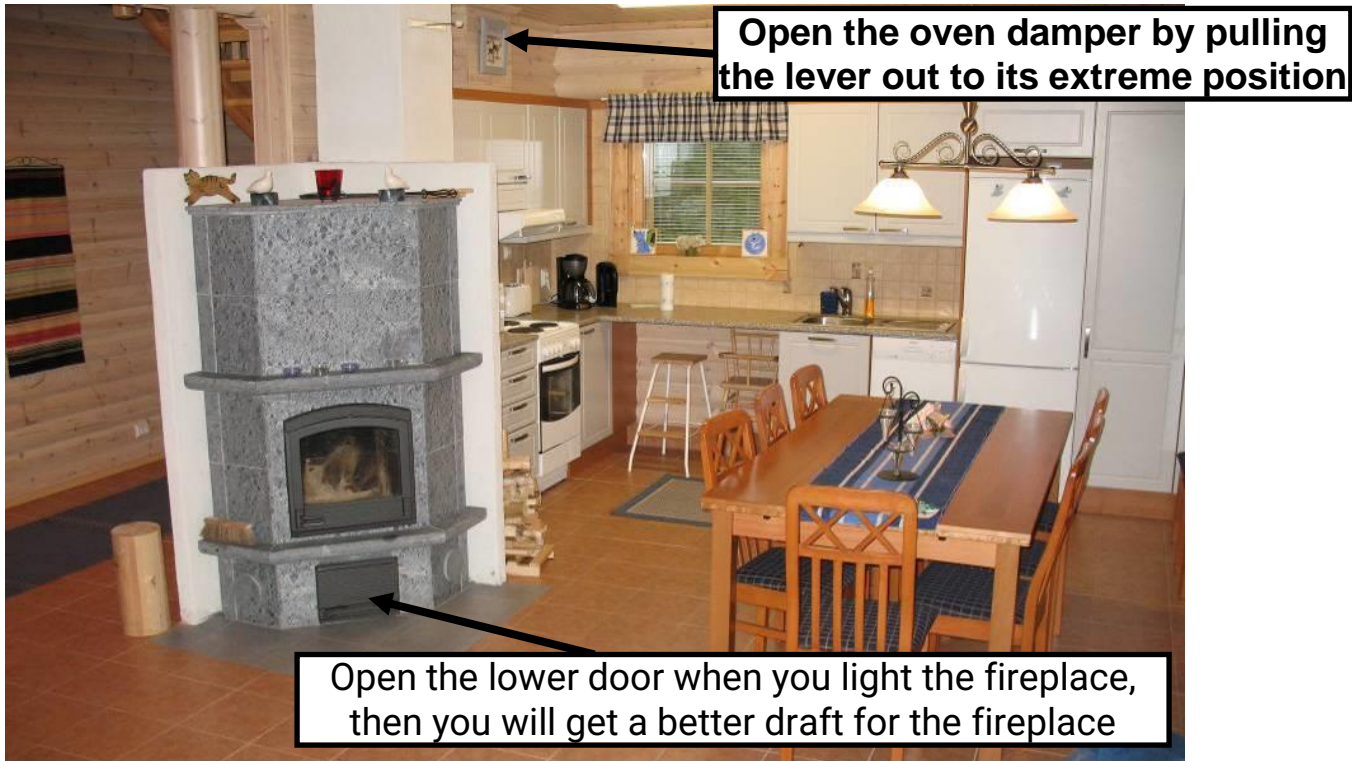
**Upstairs rooms are equipped with electric radiators, do not cover the radiators with clothes or other equipment.**

The PÄÄLLÄ / POISSA switch in the hallway affects the temperature by about 5 degrees.

**The fireplace quickly stores heat** and this must be taken into account when heating the fireplace for a long time.



## Fireplace heating



The fireplace quickly stores heat and this must be taken into account when heating the fireplace for a long time.

- Open the fireplace damper at the point indicated by the arrow
- Put a small amount of trees and light them
- When the trees burn well more trees should not hit the glass of the oven. Keep the fireplace door closed when there is a fire in the fireplace.
- The draft of the fireplace can be adjusted from the bottom of the fireplace

**Be sure to empty the ashes and clean the fireplace before leaving the cottage (cleaning the fireplace is part of the final cleaning).** Take the ashes to an ashtray that should be at least 5 m away from the cottage.

## Sauna heating



Location of sauna heating switches

The stone stove in the sauna gives a nice moist steam. The power of the heater is 10.5 kW when a 6 kW heater would be enough for the space. For this reason, **DO NOT RAISE THE HEATING LEVEL OF THE HEATER OVER HALF.**

### Sauna heating

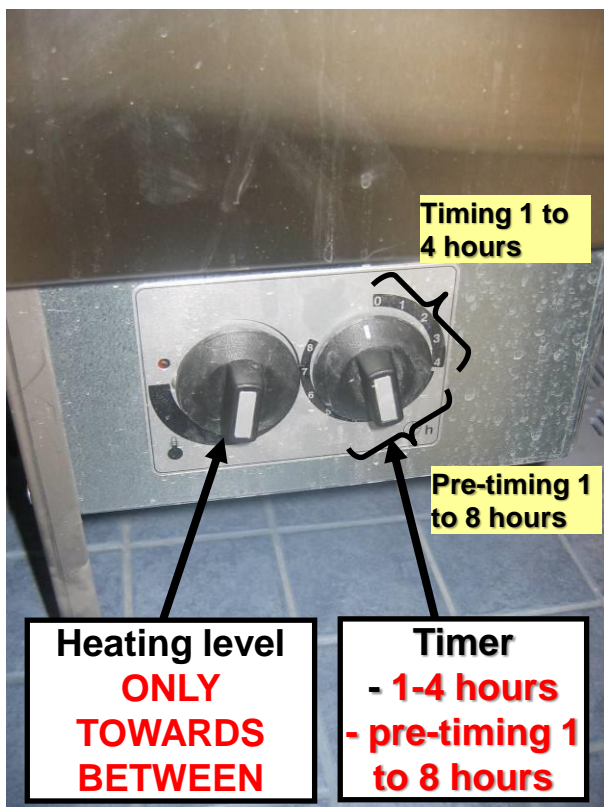
1. check that the heating level is not more than halfway
2. turn the timer for 1 to 4 hours and the stove will start to heat up
3. The sauna is warm after about 30 min

**Pretiming.** If you go for a long run, for example, and you want the sauna to be warm when you arrive, you can heat up the sauna with a pre-schedule. Turn the timer past the heating control for 1 to 4 hours + as many hours as you expect your loop to last. The pre-timer starts and the sauna only heats up when the pre-timer is over.

**When you put the sauna to warm up, the floor heat from the cottage is cut off.** If the sauna is on for a long time, the temperature of the cottage may drop.

**DO NOT USE THE SAUNA UNIQUE UNNECESSARY, ONLY AS NEED FOR SAUNA.**

**BE SURE TO TURN OFF THE STOVE WHEN YOU STOP BEING IN SAUNA.**



Heating level  
**ONLY  
TOWARDS  
BETWEEN**

Timer  
**- 1-4 hours  
- pre-timing 1  
to 8 hours**

## Showers / hot water

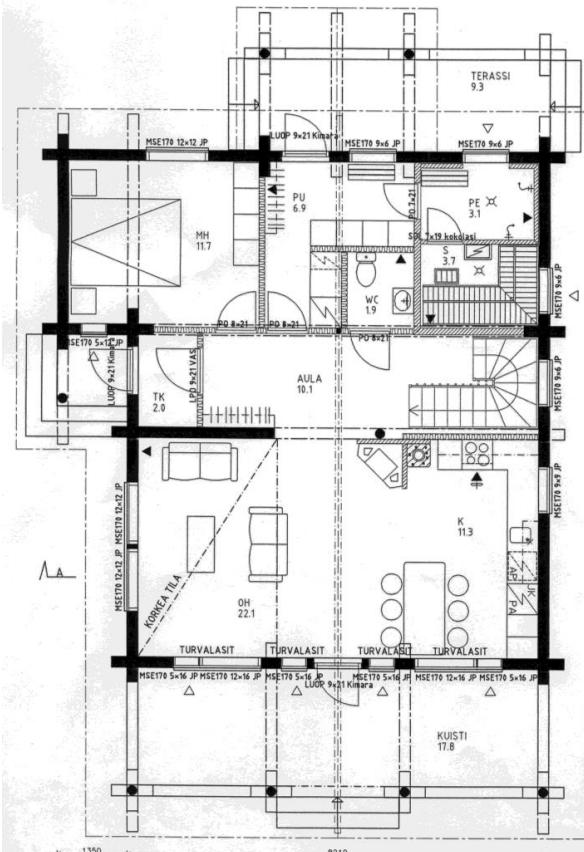


The cottage has a **300 liter hot water tank** (under the sauna bench).

The water heater is connected directly to the electricity, so there is enough hot water for a normal sauna for even a larger number of people.

The bathroom has two showers, the showers operate at a reasonably high water pressure, it is not limited.

**Use as much water as necessary, try your best to save water consumption!**



**There are two showers.**

## TV instruction manual

**Touching the device connections is strictly prohibited !!!!**

### Equipment



1. TV (LG)
2. Amplifier (Yamaha)
3. Broadband Channels (Yaris / Maxivision)
4. Recording set-top box (Topfield)
5. iTV
6. DVD / Blu-ray
7. Karaoke Labels (MadBoy)

### Remote controls





## 1. Using the TV

- Antenna channels, TV's own sound

1. Turn on the TV with the power button
2. Press the Input dial
3. Select Antenna
4. Channels from the number keys
5. Channel switching
6. Adjusting the sound



### Antenna channels (may vary)

1. YLE 1
2. YLE 2
3. MTV3
4. Nelonen
5. YLE FEM
6. Sub TV
7. YLE Teema
8. Liv
9. AVA (13)
10. Alfa TV (15)
11. TCL (18)
12. Estradi (28 )

## 2. Broadband TV Channels

- fiber optic channels, sound through an amplifier

1. Turn on the TV and (Amplifier on the power button to display Input)
2. Press the Input dial
3. Select HDMI1
4. Turn on the amplifier with the power switch (immediately after the TV)
5. Select HDMI1 on the amplifier's remote control
6. Start (Arris) the Maxivision box from the power key
7. Channels are selected using the (Arris) number buttons
8. Channel switching
9. The volume is adjusted by adjusting the volume of the amplifier
10. You can select the audio program from the amplifier setting, recommended 7Ch Stereo



### Maxivision channels (may vary)

- |              |                |
|--------------|----------------|
| 1. YLE 1     | 8. LIV         |
| 2. YLE 2     | 9. TV 5        |
| 3. MTV3      | 10. Kutonen    |
| 4. Nelonen   | 11. JIM        |
| 5. YLE FEM   | 12. FOX        |
| 6. Sub TV    | 14. Frii       |
| 7. YLE Teema | 15. AVA        |
|              | 16. Hero       |
|              | 19. Iskelmä TV |

# LUOSTON VÄÄRTIN KAMMI

www.vaartinkammi.com

## Amplifier outputs



1. Power switch
2. HDMI 1 (Maxivision)
3. HDMI 2 (iTV)
4. HDMI 3 (BVD/Blu-ray)
5. HDMI 4 (Topfield digiboxi)
6. Sound adjustment
7. Audio program (7 ch stereo)



The devices are connected to pass through a Yamaha amplifier. Switching devices via HDMI options (2-5)

The amplifier is connected to the speakers and the volume is adjusted via the Volume button (6). The amplifier has various options for sound selection, recommended 7 Ch Stereo, for the best sound from all speakers.

## 3. iTV

- movies, Netflix, YouTube, kautta, audio amplifier

1. Turn on the TV and (Amplifier on the power button to display Input)
2. Press the Input dial
3. Select TV Input List HDMI1
4. Turn on the amplifier with the power switch (immediately after the TV)
5. Select HDMI 2 on the amplifier's remote control
6. Turn on the iTV with the power key (press Menu)
7. Use the arrow keys to move and press the center of the circle to select the desired application, then press Menu to return to the selection
8. Use the arrow keys to pause and resume the presentation...
9. The volume is adjusted by adjusting the volume of the amplifier
10. You can select the audio program from the amplifier setting, recommended 7Ch Stereo



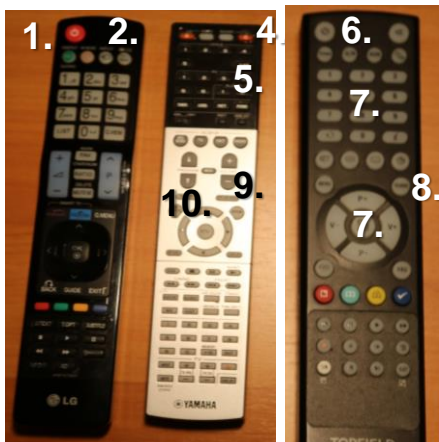
## 4. DVD / Blu-ray

1. Turn on the TV and (Strong power button to display Input)
2. Press the Input dial
3. Select TV Input List HDMI1
4. Turn on the amplifier with the power switch (immediately after the TV)
5. Select HDMI 3 on the amplifier's remote control
6. Turn on the DVD / Blu-ray player
7. add a DVD / Blu-ray movie to the player slot, start the movie
8. The volume is adjusted by adjusting the volume of the amplifier
9. You can select the audio program from the amplifier setting, recommended 7Ch Stereo



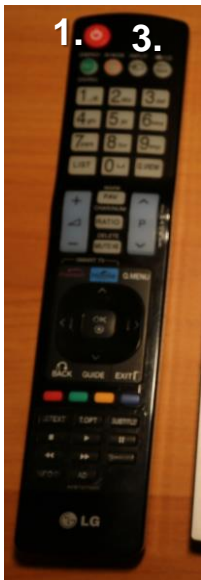
## 5. Topfield recording digibox

- Record the TV programs you want, use your own digital channel card,...
1. Turn on the TV and (Strong power button to display Input)
  2. Press the Input dial
  3. Select TV Input List HDMI1
  4. Turn on the amplifier with the power switch (immediately after the TV)
  5. Select HDMI 4 on the amplifier's remote control
  6. Turn on the Topfield set-top box with the power button
  7. Select a channel using the channel keys or P + / P- selector
  8. The easiest way to make recordings is through the Guide key
  9. The volume is adjusted by adjusting the volume of the amplifier
  10. You can select the audio program from the amplifier setting, recommended 7Ch Stereo



## 6. Using Karaoke

1. Turn on the TV
2. Turn on the MadBoy
3. Press the Input dial
4. Select TV Input List AV2
5. Use the MadBoy device as instructed
  1. Open the DVD tray
  2. Add a karaoke disc
  3. Attach the microphones
  4. Adjust the sound balance



## COMPUTER AND BROADBAND



The cottage has a 100 Mbit / s fiber optic broadband connection implemented as follows;

- in each room via cable, connection from the center (in the entrance hall of the cottage) to the box, 2 pcs / room
- WLAN - a wireless connection that covers the entire area of the cottage, about 100 m from the transmitter, the key to the wireless connection is at several points on the wall of the cottage.

The cottage has a computer, basic with a webcam, microphone and speakers.

There is open access to the computer.

If broadband does not work, disconnect the power cords from the modem and router (the power cords on the top shelf of the vestibule).

A printer is connected to the computer.

**Do not install your own software on your computer!**

**Security issues must be taken into account, visiting vague pages and opening files as well as vague files must be avoided.**

**(ATTENTION TO THE VIRUS THREAT)**

## BED-LINEN AND BEDDING



**Bed linen must always be used in the beds !!!**

Each tenant always brings their own linens. They can also be rented in advance by ordering and paying a total of 15 euros for the set (sheet, duvet cover, pillowcase, towel).

At the end of the rental period, the beds must be made in such a way

- that the bed will be left with a sprinkled and ventilated pillow and a blanket
- on top of the pillowcase the bedspread will be the top one.

**Beds should be left according to model (photos)**

A cot (childrens bed) can be found in the small bedroom upstairs



## KITCHEN AND CABINETS



The living room kitchen is the “heart and command center of the cottage”.

The kitchen is equipped with a variety of appliances that are set in their own places.

Keep cabinets clean and utensils clean, always put them in place.



In the living room kitchen can be found

- Kitchen with equipment
- Oven
- Fridge-freezer
- Dishwasher
- Plenty of other machines
- A small reading library
- Air source heat pump
- Sofa set
- TV
- Home theater equipment
- Fireplace
- Instructions, etc. accessories



The underfloor heating cable on the sofa side is broken and the floor may be cool, The air source heat pump is heating this area.



## KITCHEN AND CABINETS



The kitchen table has the option to extend from both ends of the table.

Pull out the extensions under the table top. When you no longer need a continuation, return the table to its normal size.



**Cabinets and accessories are in a certain exact order, do not go to change the order!**

# LUOSTON VÄÄRTIN KAMMI

[www.vaartinkammi.com](http://www.vaartinkammi.com)

## KITCHEN AND CABINETS



The upper cabinet in the back wall of the kitchen is reserved for food, so it is easy and quick to pick it up during the “cooking phase”.

The order must not be changed!



Picks, knives, buckets and other utensils for cooking can be found in the drawers.



There are pots and frying pans in the cupboard



The lower cupboards on the right side of the page store the plates.

Some of the plates can also be found in the glass cabinet.

**Keep drawers and equipment clean.  
Do not change the order**

## KITCHEN AND CABINETS



The fridge-freezer is spacious, use the dressing room fridge as an extra fridge if necessary.

Keep your refrigerators clean, **remove the accessories you brought from the refrigerator and freezer when you leave the cottage.**



The glass cabinet has a wide range of equipment, from wine glasses to snap glasses and drinking glasses.

In addition, plates for a larger number of diners



The rightmost cabinet is for storing plastic containers, foils, kitchen appliances and utensils.

**Keep drawers and equipment clean.  
Do not change the order**

## DOWNSTAIRS BEDROOM



The downstairs bedroom can accommodate up to 6 people

- Double bed, 2 x 80 cm mattress + pillow
- Top bed 120 cm mattress + pillow-top
- Sofa bed, if necessary for 2 guests
- Flap table

The lower bed and the upper bed have two pillows and a blanket in each, the beds must be made at the departure stage as shown (pillows and blanket in place, bedspread on)



The 120 cm bed in the upper bed can accommodate two lighter sleepers if needed

The sofa bed can be opened into a double bed if required.

A folding table and chair make it possible to work in the room, for example with a laptop

Inside the wardrobe you will find a room with underfloor heating control and bed linen for the sofa bed.

## DOWNSTAIRS HOUSEHOLD ROOM



The household room has a washing machine, drying cabinet, ironing facilities, a laundry rack, a large fridge, trail maps and a dressing room when going to the sauna.



The household room also stores peffettes, floor ossification equipment, washing powder and cleaning cloths.

From the household room / dressing room you can cool off on the back terrace, **be sure to lock the door ! (test it)**

## DOWNSTAIRS WC



Downstairs toilet accessories, the downstairs toilet is equipped with a games cabinet, a vertical cabinet, a hair dryer, a children's potty and other necessary toiletries.

Keep the space tidy, be sure to bring your own supplies when you leave.

Be sure to refill the toilet paper, there is paper in the closet for the start but the customer will replenish the consumption.



# LUOSTON VÄÄRTIN KAMMI

[www.vaartinkammi.com](http://www.vaartinkammi.com)

## DOWNSTAIRS LOBBY AND STAIRS



The downstairs lobby has a mirror and chest of drawers where you can store your own accessories (beanies, gloves, make-up bags...).

A children's highchair, another clothes rack and indoor exercise equipment will be stored under the staircase.

**Walk carefully up the stairs if you have slippery socks, the stairs are not equipped with non-slip barriers!**



# LUOSTON VÄÄRTIN KAMMI

[www.vaartinkammi.com](http://www.vaartinkammi.com)

## UPSTAIRS LOFT



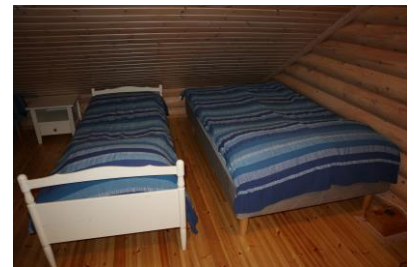
The upstairs loft has sleeping accommodations as follows;

- Bed 120 cm
- 2 x single bed 90 cm
- Pull out couch (sofa bed)

The loft also has another TV and game machines, a computer and printer, and a small bookshelf.

The beds in the loft are made on departure as are the other beds, the pillow and bedding are neatly placed on the bed and the bedspread is on.

There is an exit to the upper balcony from the loft, be sure to lock the door when you leave!





## UPSTAIRS TV JA GAME MACHINES



The upstairs loft has a TV, two slot machines and plenty of games.

The game machines are

- XBOX 360
- Playstation 3 game machine
- Plenty of games for both devices

Keep the games and shelves tidy, use the equipment so that even the next cottagers can enjoy them.

Do not move games and slot machines, but only play them on this equipment.

Be sure to adjust the sounds of the games so that you do not disturb other cottagers!

## UPSTAIRS WC



There is another toilet upstairs.

In addition to the toilet accessories, the upstairs toilet is equipped with a games cabinet, a lower cabinet and other necessary toiletries.

Keep the space tidy, be sure to bring your own supplies when you leave.

Be sure to refill the toilet paper, there is paper in the closet for the start, but the customer will replenish the consumption.



# LUOSTON VÄÄRTIN KAMMI

[www.vaartinkammi.com](http://www.vaartinkammi.com)

## UPSTAIRS BEDROOMS



Each of the upstairs bedrooms has two 90 cm wide beds, a table, a chair, a closet and a clothes rack. Extras and a duvet can be found in the wardrobe.

The rooms also have electric battery to control the temperature.



Keep the rooms clean, leave the beds on the bed so that the pillow and duvet come neatly into the bed and the bedspread comes on top.

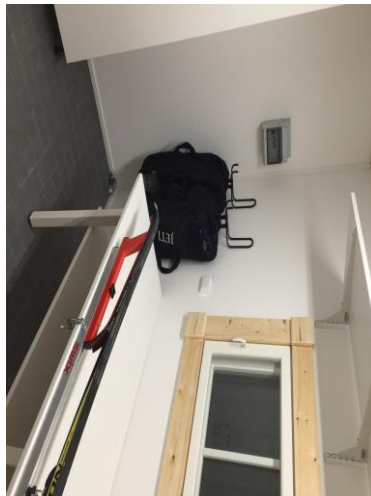


## CAR ROOF AND WARM SKI FACILITY

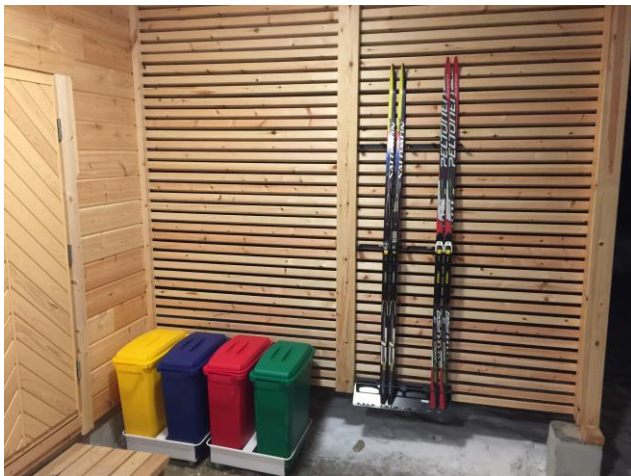


The cottage has a two-car carport and good facilities for storing skis both outdoors and indoors.

In the warm ski care area, the skis are easy to lubricate before the ski run.



## CAR ROOF AND WARM SKI FACILITY



In the carport you will find small containers for sorting waste

- Bottles
- Glass jars
- Tin cans
- Foliage

Sort waste into containers

Ski creams and equipment include basic accessories, a fixed lubrication stand, a heating iron and some lubrication equipment. Be sure to return the products you borrowed!

There are a few snowshoes and summer games in the space.

The ski slope is less than 100 meters from the ski facility.



## CLEANING THE FIREPLACE



The customer is responsible for cleaning the glass of the fireplace stove before leaving the cottage.

Clean the ashes with a brush through the hearth of the fireplace in an ashtray. Remove the larger pieces of ash from the stove to the ashtray.

Soak the newsprint in water, take the ashes on a damp paper and wipe the dirt stuck on the glass with it, the dirt will come off when you rub it with the damp ashes.

Finally, wipe the fireplace glass clear with water and paper.

Drain the ashes from the ashtray below, take the ashes to the ashtray.

Once the ashes have cooled 100%, they can be placed in a plastic bag and taken to a rubbish bin.



**Do not place candles without a base on the fireplace, they will melt!**

**Do not place a hot ashtray next to the cottage / near a burning platform!**

## FIREWOOD



Wooden shed, birch logs for the fireplace inside the house

The birch logs in the wood shed are intended for heating the fireplace.

Birch logs must not be used as firewood.

Pine logs, boards and logs in the vicinity of the campfire site are intended for campfire trees.



Firewood for a campfire

# LUOSTON VÄÄRTIN KAMMI

[www.vaartinkammi.com](http://www.vaartinkammi.com)

## Contact information

Kiinteistöosakeyhtiö Luoston Väärtin Kammi,  
Y-tunnus: 1976435-0, Tuulenpesä 8, 99555 Luosto

Questions about the cottage's inquiry, booking, keys and any cottage problems

Jari Haavisto

Puh: 050-5599813

E-mail: [jari.haavisto@sompio.fi](mailto:jari.haavisto@sompio.fi)

Ari Akseli

Puh: 050-5023612

E-mail: [ari.akseli@kesko.fi](mailto:ari.akseli@kesko.fi)

## Leaving the cottage

The rental period for the cottage ends at 12:00 on the last day of your booking. For weekend bookings, the cottage is available until 18:00 on Sunday evenings. When leaving the cottage, close the doors and windows. **Leave the key in the key box.**

You will take care of the cleaning of the cottage during your stay and final cleaning on the day of departure. Cleaning is done according to the cleaning instructions, follow it carefully.

"Leave the cottage in the condition you would like it to be when you arrive"

**Be sure to lock the cottage doors carefully, they may be left open easily, check the lock!**