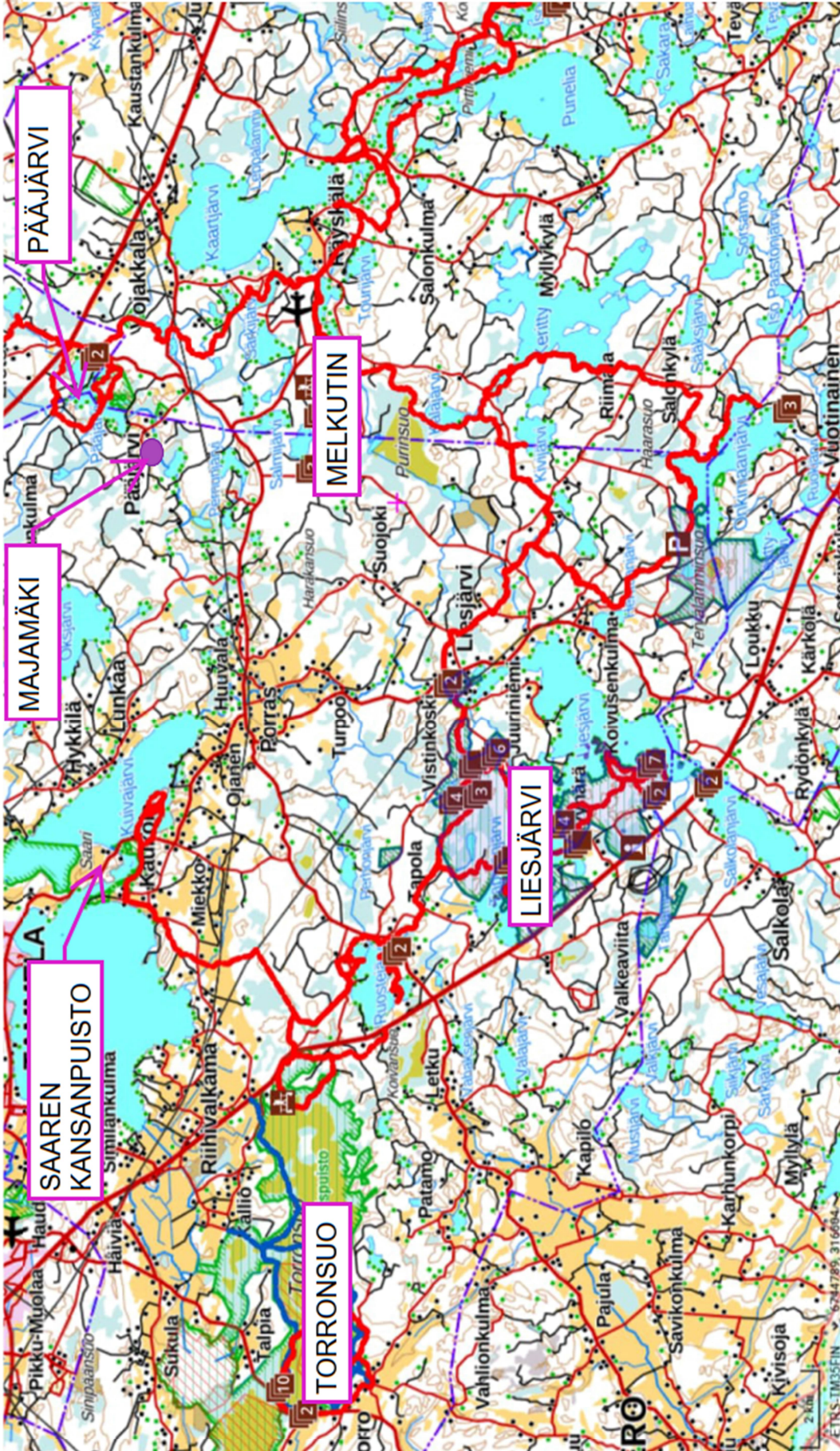


NATURE SITES AND PLACES NEAR MAJAMÄKI



JÄRVI = LAKE
MAJA = HUT

MÄKI = HILL
SUO = BOG, SWAMP

SITES AND PLACES NEAR MAJAMÄKI



Liesjärven kansallispuisto / National park of Liesjärvi

Several different routes and parking places. Look the map in the web links below.

- Hyypiönpolku 2,8 km
- Punatulkunpolku 3,1 km
- Pohjantikanpolku 5 km
- Ahonnokan luontopolku 1,3 km
- Peukaloisenpolku 3,8 km
- The trails of Ruostejärvi recreation area

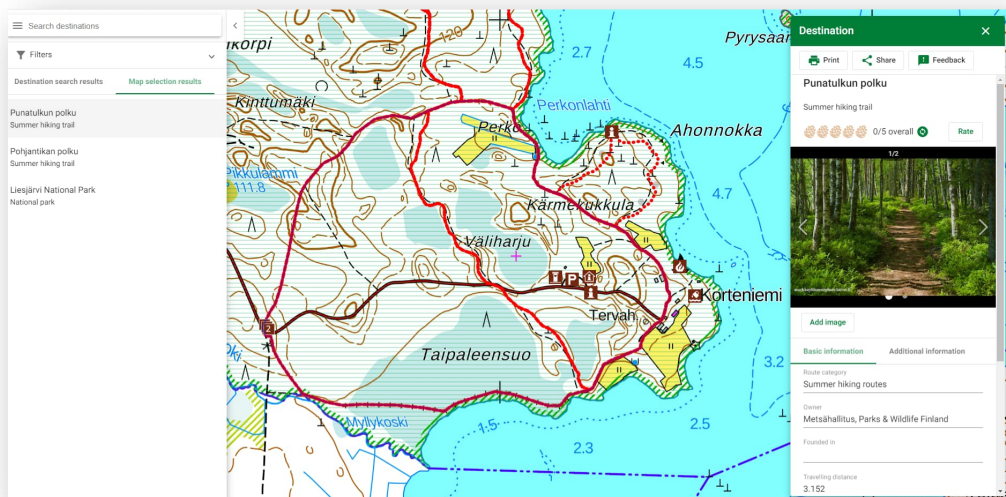
<https://julkaisut.metsa.fi/wp-content/uploads/sites/2/2023/05/liesjarvieng.pdf>

https://julkaisut.metsa.fi/wp-content/uploads/sites/2/2022/06/liesjarvi_korteniemieng.pdf



This web link is link to a map which has all the routes marked interactively. You can get info of any route if you click it.

<https://www.retkikartta.fi/?lang=en&id=850>

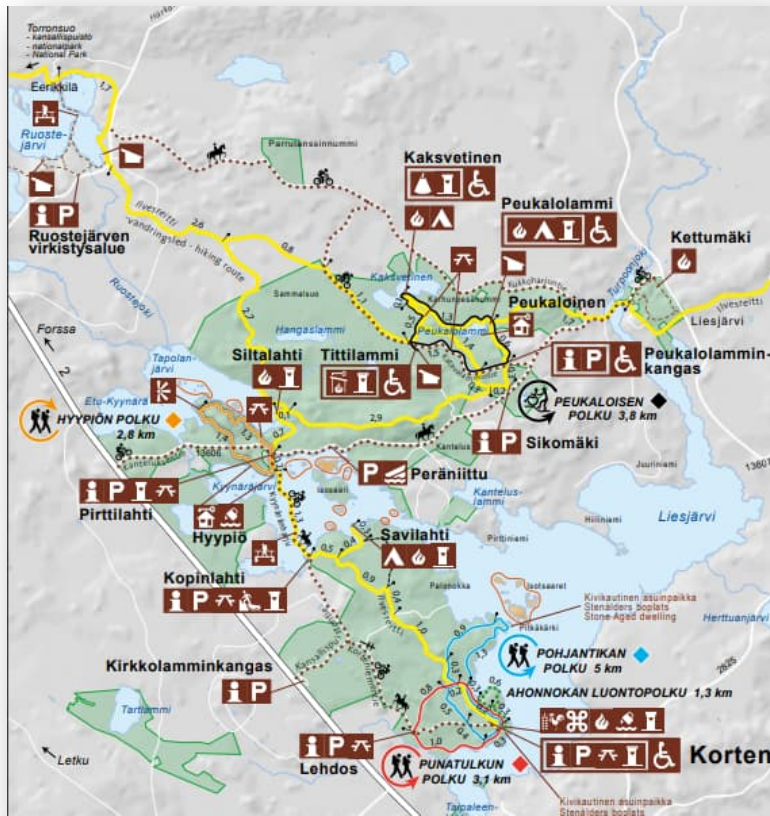


This is web link to an official National park site that tells info of National Park of Liesjärvi and Ruostejärvi Recreation Area.

<https://www.nationalparks.fi/ruostejarviliesjarvinationalparktrail>



SITES AND PLACES NEAR MAJAMÄKI



WORD LIST:

LUONTOPOLKU = NATURE TRAIL

POLKU = TRAIL

VIKISTYSALUE = RECREATION AREA

JÄRVI = LAKE

SITES AND PLACES NEAR MAJAMÄKI



Saaren Kansanpuisto / Folk Park of Saari



WORD LIST:

OPASTUS = INFO
PYSÄKÖINTIALUE = PARKING SPOT
NÄKÖTORNI = OBSERVATION TOWER
TULENTEKOPAIKKA = CAMPFIRE PLACE
LAAVU = CAMPFIRE TENT

RAVINTOLA = RESTAURANT
UIMAPAIKKA = SWIMMING PLACE
PYÖRÄILYREITTI = MOUNTAIN BIKE ROUTE
PUHELIN = PHONE
KÄYMÄLÄ, WC = TOILET
VAELLUSREITTI = HIKING TRAIL
TIE = ROAD

All the web sites of the Folk Park are in Finnish but here is short translation.

The folk park was established in 1932 on land leased from the Saari manor as a general place for recreation and free time. The folk park is located in the highlands of Tammela, in the scenically and geologically valuable ridge section of Kaukolanharju. The total area of Kansanpuisto is 48 hectares and since 1980 it has been jointly owned by the municipality of Tammela and the city of Forssa. The park is called the "pearl" of Southwest Häme.

The park has clear water swimming place in the shore of lake Suujärvi and there is also sandy beaches in the shore of lake Kuivajärvi, as well as two 3-kilometer marked nature trails, of which there is a shelter on the shore of Kuivajärvi and a fire place along the Raanpää Ridge trail. There is a 600-meter long nature trail for people with reduced mobility.

There is a summer kiosk in the area of the public park. Near Kansanpuisto is the observation tower of Kaukolanharju, next to which a commemorative stone of the artist Albert Edelfelt has been erected. The tower is open from 12 to 18 between 2.6-4.8. and there is a small entering fee.

There is also building called Lounais-Hämeen Pirtti in the park, a country house decorated with peasant artefacts. The building is a traditional restaurant but it is open only for groups by order. There is also outdoor theater leading to Suujärvi lake.

SITES AND PLACES NEAR MAJAMÄKI



App for phone **Outdooractive** shows the routes.

Sites (in Finnish)

<https://www.tammela.fi/kulttuuri-vapaa-aika-ja-liikunta/kulttuuri-ja-matkailupalvelut/luontokohteet/saaren-kansanpuisto>

<https://hameenvirkistysalueyhdistys.fi/alue/saaren-kansanpuisto/>



Pääjärven virkistysalue / Pääjärvi leisure area

Parking spot is 5,6 km from Majamäki (in address: Härkätie 1126, 14300 Hämeenlinna)

Marked circular routes:

The route, 1.5 km

starts from the parking area and goes around a short loop in the forest and following the beach. The route is marked with yellow paint spots on the trees, and it is quite easy to navigate, although there are differences in relief.

Services: There is a dry toilet in the parking area and there are two rest areas along the route, both of which have a fire place.

Connection: The route partially coincides with a longer (4.5 km) route, and the routes are also part of the Häme Ilvesreitti.

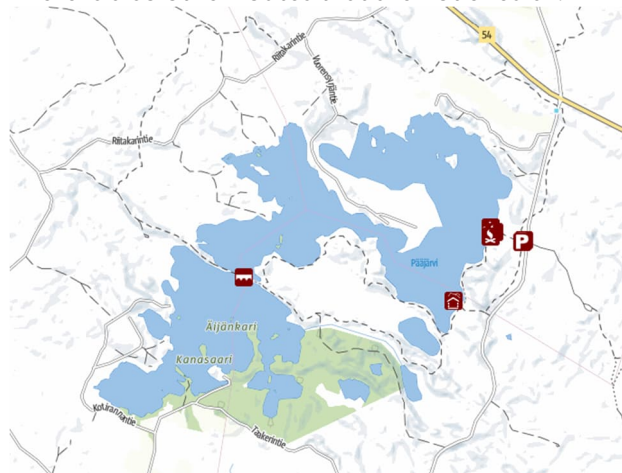
The route, 4.5 km,

starts from the parking area along a shorter route. The route is marked with yellow paint spots on the trees and is fairly easy to navigate, but the route has short steep ups and downs.

Services: There is a dry toilet in the parking area and there are two rest areas along the route, both of which have a fire place. In addition, Kynnysniemi has a rest area with a table and benches. The terrain signs are in Finnish.

Connection: The route partly coincides with a shorter (1.5 km) route, and the routes are also part of the Häme Ilvesreitti.

There is also other routes that are not circular!



SITES AND PLACES NEAR MAJAMÄKI

Iso-Melkutin (Nature Reserve)

Main parking spot is 8 km from Majamäki (next to Räyskälä airport)

Recommend ring route 6,9 km

Shorter route 3,1 km

Longer routes 35,4 km, 18,8 km and also mountain bike routes 9,9 km, 31,1km and 42,7 km (Poronpolku/Reindeer trail).

Download the app **Outdooractive** to your phone and you can see all of the marked routes.

<https://retkipaikka.fi/kristallinkirkas-iso-melkutin-maalta-veden-alta-ja-ilmasta-joko-tunnet-taman-hameen-jarviylangon-helmen/>

<https://www.loppi.fi/hyvinvointi-ja-vapaa-aika/ulkoilureitit-ja-luontokohteet/retkeilyreitit/melkuttimen-kierto/>

https://cdn.loppi.fi/uploads/sites/2/2022/12/02-melkutin_a0_pysty_indsta_jpg_korkea96.jpg?strip=all&lossy=1&w=2560&ssl=1



WORD LIST:

P = PARKING SPOT

i = INFO

LAAVU = CAMPFIRE TENT

SITES AND PLACES NEAR MAJAMÄKI



SITES AND PLACES NEAR MAJAMÄKI

Torrnsuon kansallispuisto / National park of Torrnsuo

Parking spots are 40 km from Majamäki. There is two parking spots, Kiljamo and Pehku (marked in the map). You can access to both routes from Kiljamo parking spot. From Pehku you can access directly to longer route.

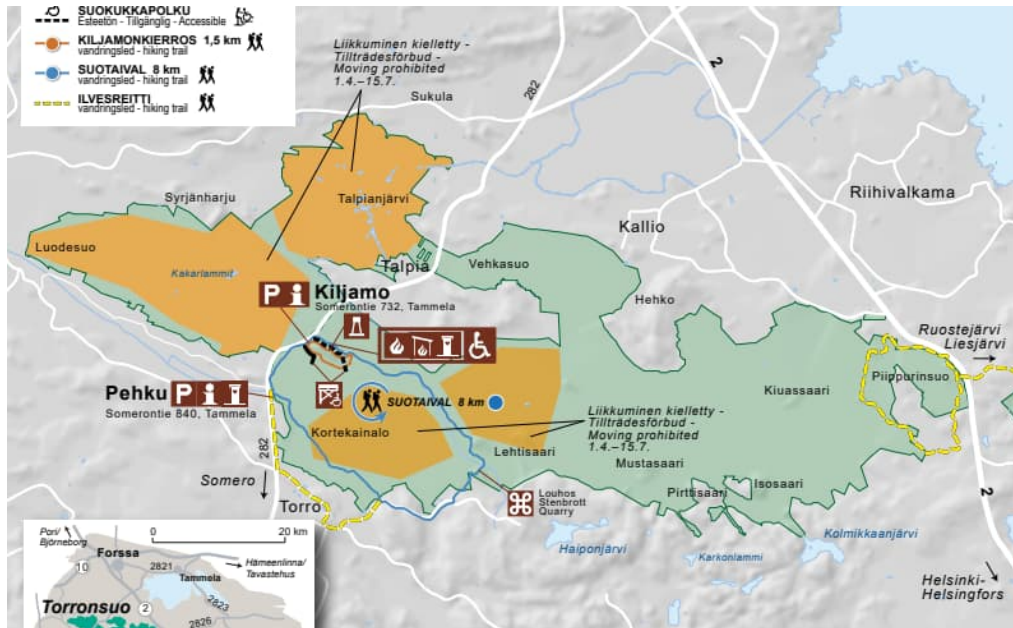
FI: <https://julkaisut.metsa.fi/wp-content/uploads/sites/2/2023/05/torrnsuofin.pdf>

FI/SWE/EN: <https://julkaisut.metsa.fi/wp-content/uploads/sites/2/2022/09/torrnsuoeng.pdf>



Routes 1,5 km (Kiljamon kierros, orange line in the map) and 8 km (Suotaival, blue line in the map)

Swamp terrain with duckboards. Very different terrain from the forest you can see near Majamäki so it is worth to visit.





SITES AND PLACES NEAR MAJAMÄKI

Sites to get info of nature attractions in Finland

www.nationalparks.fi (same page in finnish: luontoon.fi)

retkipaikka.fi/kartta (site is in finnish but has good map showing places and all info can be translated via different apps)



<https://www.retkikartta.fi/?lang=en&id=850>

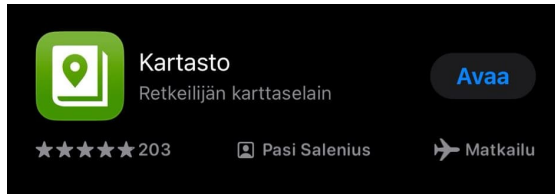


PHONE APPS OF TERRAIN MAPS IN FINLAND



Kartasto

- language: FI and EN
- Free version has only the official Finnish terrain map. Paid version has also Finnish nautical maps and terrain maps of multiple other countries.



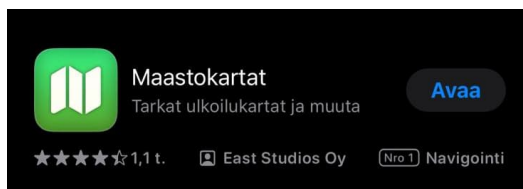
Karttaselain – Maastokartta

- language: FI
- Contains official Finnish terrain map, air view, city map and terrain map of Norway



Maastokartat

- language: Finnish, English, Norwegian, Swedish and German
- Free version has only the official Finnish terrain map. Paid version has also Finnish nautical maps and terrain maps of multiple other countries.

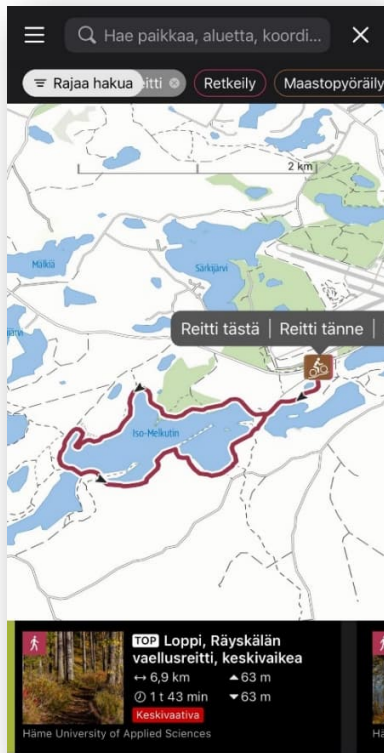


PHONE APPS OF TERRAIN MAPS IN FINLAND



Outdooractive

- shows the marked routes and trails but the map is not official terrain map.
- language: Finnish, English, Spanish, Hebrew, Hindi, Dutch, Italian, Japanese, Chinese, Greek, Norwegian, Portuguese, French, Romanian, German, Slovak, Turkish, Czech, Ukrainian and Hungarian)



Retkipaikka

- Languages: FI /EN (most of the blogs are only in Finnish, but the app is available also in English)
- shows blogs from people who have been walking the marked route in the map. Blogs contain a lot of pictures and info of the places.

PHONE APPS OF TERRAIN MAPS IN FINLAND

