

TOOLS FOR TEACHERS

WORKSHOP FOR THE GLOBAL.ME PROJECT, 13.9.2012, TUUSULA

The logo for Learning for Integration ry (LFI) is located in the top right corner. It consists of the letters 'LFI' in a bold, white, sans-serif font, set against a green rectangular background. Above the letters, there is a white speech bubble icon with a tail pointing towards the top right.

1. FLASHCARD ACTIVITIES

- 1.1 This is me - Words to describe ourselves (flashcards, ice breaker activity)
- 1.2 Cultural identity shoe - Using word clouds in teaching (Tagxedo - Creator)
- 1.3 Walk a mile in my shoes - Identity cards (flashcards and debate)
- 1.4 Weird laws from around the world. Immigration questions. Debates and strong opinions (ideas for using flashcards and role-plays in classroom)

2. INTRODUCING "THE LANGUAGE MENU" WEBSITE AND TEACHERS' TOOLS

- 2.1 Clip-art gallery
- 2.2 Worksheet generators: Bingo, Board game, Categories, Crossword puzzle, Fill-in the blank, Flashcard, Framework, Label the pictures, Lines, Matching exercise, Multiple choice, Missing words, Split words, Scrambled sentences, True or false, Word spiral, Wordsearch
- 2.3 Group work on material creation - diversity, tolerance, intercultural communication and alternative education themes

3. FEEDBACK AND DISCUSSIONS. RESOURCES LIST

Flashcards and worksheets generators - <http://eng.teachers.thelanguagemenu.com/>
Tagxedo - Creator <http://www.tagxedo.com/>
Scribd group: <http://www.scribd.com/Veronica%20Gilhooly>
Minna - Centre for Gender Equality Information in Finland <http://www.minna.fi>

Learning for Integration ry (LFI) is a Finnish non-profit organisation that promotes the learning of languages and cultural sensitivity of migrant, immigrant and refugee children and youth in Finland and other Nordic countries through activities such as workshops, playgroups, language tutoring and language cafés.

Follow our activity calendar at www.lfi.fi

THANK YOU AND HAPPY TEACHING!

LFI team: Bianca Biro & Marja-Liisa Helenius

www.lfi.fi

info@lfi.fi

WALK A MILE IN MY SHOES

The logo for LFI (Local Financial Inclusion) is located in the top right corner. It consists of the letters 'LFI' in a bold, white, sans-serif font, set against a green background that is part of a larger graphic element.

PICK AN IDENTITY CARD. NOW LINE UP AND TAKE A STEP FORWARD IF...

- You can use all forms of public transport.
- You can vote in national and local elections.
- You can travel freely to other countries.
- You can purchase alcohol.
- You can drive a car.
- You can get a passport.
- You can adopt children.
- You can get a bank loan.
- You can get a job.
- You can party in the local pub/night club.
- You can dress as you like when out in public.
- You have never encountered any serious financial difficulty.
- You have adequate social and medical protection for your needs.
- You can celebrate the most important religious festivals with your relatives and close friends.
- You feel your language, religion and culture are respected in the society where you live.
- You feel that your opinion on social and political issues matters, and your views are listened to.
- Other people consult you about different issues.
- You know where to turn for advice and help if you need it.
- You have never felt discriminated against because of your origin.
- You can go away on holiday once a year.
- You can invite friends for dinner at home.
- You have an interesting life and you are positive about your future.
- You feel you can study and follow the profession of your choice.
- You are not afraid of being harassed or attacked in the streets, or in the media.

Source: http://www.eycb.coe.int/compass/en/pdf/2_38.pdf

DIVERSITY CARDS 1 - WALK A MILE IN MY SHOES

WALK A MILE IN MY SHOES

Male
33
German
Single
Bisexual



www.lfi.fi

WALK A MILE IN MY SHOES

Male
16
Finnish
Heterosexual
Lutheran



www.lfi.fi

WALK A MILE IN MY SHOES

Male
20
American
Co-habiting
1 child



www.lfi.fi

WALK A MILE IN MY SHOES

Female
65
Australian
Widowed
With a disability



www.lfi.fi

WALK A MILE IN MY SHOES

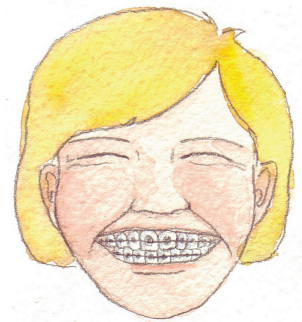
Male
72
Bulgarian
Married
No children



www.lfi.fi

WALK A MILE IN MY SHOES

Female
15
Polish
Single
Catholic



www.lfi.fi

WALK A MILE IN MY SHOES

Male
48
Russian
Separated
3 children
With a disability



www.lfi.fi

WALK A MILE IN MY SHOES

Female
36
Nepalese
Married
2 children
Hindu



www.lfi.fi

DIVERSITY CARDS 2 - WALK A MILE IN MY SHOES

WALK A MILE IN MY SHOES

Female
40
French
Single
Bisexual



www.lfi.fi

WALK A MILE IN MY SHOES

Female
38
British
Single
With a
disability



www.lfi.fi

WALK A MILE IN MY SHOES

Female
22
Finnish
Single
Muslim



www.lfi.fi

WALK A MILE IN MY SHOES

Male
52
Finnish
Separated
2 children



www.lfi.fi

WALK A MILE IN MY SHOES

Female
19
Mexican
Heterosexual
Co-habiting
Pregnant



www.lfi.fi

WALK A MILE IN MY SHOES

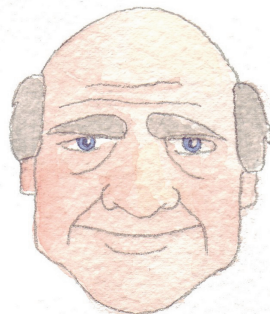
Female
16
Vietnamese
Single
With a
disability



www.lfi.fi

WALK A MILE IN MY SHOES

Male
61
Swedish
Widowed
2 children



www.lfi.fi

WALK A MILE IN MY SHOES

Female
15
Japanese
Bisexual
Single



www.lfi.fi

DIVERSITY CARDS 3 - WALK A MILE IN MY SHOES

WALK A MILE IN MY SHOES

Female
14
Norwegian
Single
Wheelchair
user



www.lfi.fi

WALK A MILE IN MY SHOES

Female
84
Canadian
Widowed
Wheelchair
user



www.lfi.fi

WALK A MILE IN MY SHOES

Male
17
Nigerian
Single
Muslim



www.lfi.fi

WALK A MILE IN MY SHOES

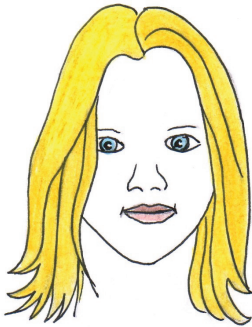
Male
19
Hungarian
Single
Wheelchair
user



www.lfi.fi

WALK A MILE IN MY SHOES

Female
15
Moldavian
Heterosexual
Orthodox
Christian



www.lfi.fi

WALK A MILE IN MY SHOES

Female
16
Brazilian
Single
Catholic



www.lfi.fi

WALK A MILE IN MY SHOES

Male
47
Albanian
Married
4 children



www.lfi.fi

WALK A MILE IN MY SHOES

Male
70
South African
Widowed
2 children



www.lfi.fi

The Prejudice Map

According to Google, people in the world are known for...

