



# Kisakallio-rastit WRE Bulletin 3

Hiidenkiertäjät welcomes you to Siuntio for Kisakallio-rastit Middle distance.

## Organizer:

Orienteering club Hiidenkiertäjät

Competition web page: <https://www.hiidenkiertajat.fi/kilpailut/kisakallio-rastit-2026/>

Event director	Samuli Toivanen
WRE event director	Ville Luoma
Course setter:	Eemeli Suominen
Contact email:	eemeli.suo@hotmail.com
Contact telephone:	+358 440 343393
Course controller:	Niko Sorvari, Rasti-Vihti
Result service:	Timo Kokko, T:mi Kokkens

## IOF Event adviser:

Simo Martomaa, FIN

## Jury

Chair: Anssi Vesanto, Espoon Suunta  
Member: Salla Kinni, Tampereen Pyrintö  
Member: Timo Tähtinen, Helsingin Suunnistajat

## Event website

<https://www.hiidenkiertajat.fi/kilpailut/kisakallio-rastit-2026/>

<https://eventor.orienteering.sport/Events/Show/8801>

## Competition schedule:

**WRE Middle Distance Thursday 14th of May 2026**

First starts at 11.00 am.

The event office is located at the Arena and is open from 9 am until the end of the competitions on May 14th

## Classes, entry fees and winning times

**M21E, W21E; Middle Distance**

Estimated winning times: 30-35 minutes

Map scale: 1:10 000, Contour interval 5 m

### Entries and entry fees

Entries and payments should be made primarily through IRMA service or alternatively via Eventor (those who don't have access to IRMA service). All WRE competitors make an entry to classes M/W21 E. **Entry fee in WRE classes is 40 €.** Emit card number must be included in the entry. Need for Emit card rental must be issued with the entry. If Emit card number is missing, the organizer will reserve an Emit card and charge 5 €.

The deadline for entries is at midnight on 7th May 2026 through IRMA (<https://irma.suunnistusliitto.fi>). IRMA instructions in English [here](#).

Non-Finnish participants without IRMA ID register via IOF Eventor (WRE classes M21, W21). Non-Finnish participants who register for a WRE class through IOF's Eventor must pay their registration fees in euros to:

Account holder: Hiidenkiertäjät ry

Bank name: Länsi-Uudenmaan Säästöpankki

IBAN: FI43 4006 1040 0244 44 BIC / SWIFT: ITELFIHH

Put name(s) of the athlete(s) in the message field.

The deadline for participation fees is 7th May 2026. Late registration by midnight on 10th May through IRMA with double fee.

In the event of any changes to registration information, please email: [timo.kokko@kokkens.fi](mailto:timo.kokko@kokkens.fi)

### Starting order is set according to the world ranking score on 7th May 2026.

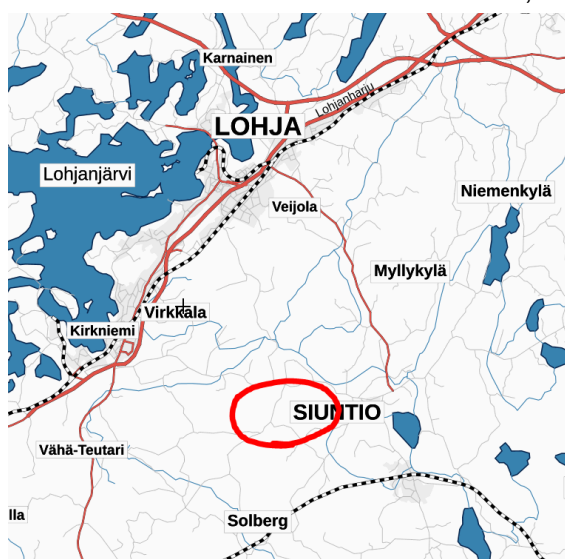
Only classes M21E and W21E will be used with a permission from the IOF Event Adviser.

## Competition venue:

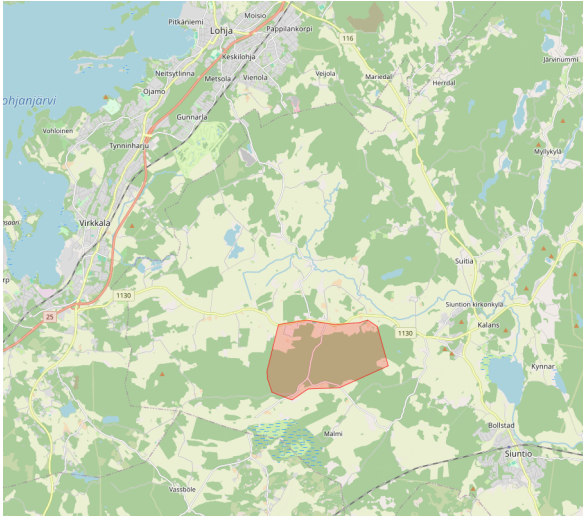
The competition is held in Siuntio at Lappers area:

Competition location on Google maps: <https://maps.app.goo.gl/KsWzGx9YW5wej4p37>

Coordinates for the Arena: 60.160424 N, 24.114599 E



The embargoed area



## Parking

Roadside parking following instructions of the organisers. Walking distance from parking to the Arena 0-2000 m (paved or gravel road). The parking takes place on roads “Flytintie” and “Grennäsintie”. Competitors are instructed to follow traffic signposting from road 1130 “Lappersintie” and follow one-way traffic upon arrival to and departure from the arena. The location for the start of the signposting is 60.173809, 24.123624 see Google Maps -link <https://maps.app.goo.gl/EtcB2dkhn4tyDBt7> [See the map image for more in-detail traffic and parking instructions for arrival to and departure from the arena.](#) No parking fee.

## Terrain and climate:

The terrain is typical western Uusimaa bare rock terrain with very detailed relief. The terrain has few tracks. The vegetation is very runnable, some dense forest areas slowing down the running speed.

The weather in southern Finland in mid-May is often moderately warm. Check the forecast for more exact information.

## Competition rules

This event follows the rules of the Finnish Orienteering Federation and the IOF guidelines for World Ranking Events. No spike shoes allowed. Studded orienteering shoes are allowed.

The rules of the Finnish Orienteering Federation are available on the website

[www.suunnistusliitto.fi](http://www.suunnistusliitto.fi)

## Map:

Scale: 1:10 000, contour interval: 5 m. Mapping by Eemeli Suominen, 2025. The competition maps are in sealed plastic cases.

There is a map flip in M21E class. The first part of the course ends to a control point on the map and the second part of the course starts on the other side of the map from the following symbol:



The map flip is marked in the control descriptions as follows:



Warm-up maps are available in a bucket near competition office (info).

## Entries received

Entries via Finnish IRMA system can be viewed [via this link](#)

Entries via IOF Eventor can be viewed [via this link](#)

## Event information

### Start lists

Start lists are available from the competition home page in results & start lists section ([see link](#))

## Punching system

EMIT punching system is used. A rental card is reserved for competitors who have not entered an Emit card number at the time of registration. Rental cards are collected from the competition

office (INFO) for a fee of 5 euros. The fee for unreturned cards is 70 euros. The competitors are responsible for using the Emit card marked on the start list.

## Start 1 and start procedure

Distance to start 750 metres. Follow taped route to Start 1 (Lähtö 1) (white-blue tapes with text "SSO"). There are 2 "bajamaja" toilets about midway to the start.

- 4 minutes: Call in & emit check-in punching, control descriptions available.
- 3 minutes: Clearing of the EMIT-card (competitors own responsibility)
- 2 minutes:
- 1 minute: competitor moves next to map holder of respective class

Start at the start time. The route to the starting point is taped, competitors must follow the taped route.

## Number bibs

All competitors wear number bibs. The bibs are available at the competition office (INFO) at the Arena. Own safety pins for attaching the number bibs.

## Length, total climb, number of controls and number of refreshment

Class	Length, km	Total climb, m	n:o of controls	Refreshment
M21E	5,7 km	190 m	20	1
W21E	4,7 km	125 m	18	1

Classes M21E and W21E have one refreshment control, where water is provided following a self service method (mugs and water tank).

## Control descriptions

Class	dimensions, mm x mm
M21E	170 x 50
W21E	150 x 50

## Complaints

The time limit for complaints is 15 minutes after the result has been published for the competitor whose result is the subject of the complaint. The complaint can be made at the event office (INFO) at the Arena.

## Maximum running time

Maximum running time is 90 minutes.

## Traveling

Information about traveling to Finland, visas etc. can be found from the web page of Finland's Ministry for Foreign Affairs.

<https://um.fi/entering-finland-and-travelling-abroad>

## Training:

Official training possibilities will be published later on the competition webpage.

## Food:

There will be a canteen in the competition center offering various options including warm food/lunch, card and cash payments.

## Toilets and shower:

Toilets (Bajamaja) at the Arena and on the way to start. No shower, indoor swimming pools in [Lohja, open 10-18](#) and [Siuntio open 7-21](#) .

## Accommodation:

Hiidenkiertäjät recommends accommodation at Kisakallio sports institute:

<https://www.kolmekampusta.fi/fi/kisakallion-kampus>

## Prizes:

Prize giving ceremony for classes M21E and W21E after the finish of respective classes. The three (3) best runners in both classes are awarded with gift cards. Please follow instructions from the speakers for time of the prize giving ceremony.

## Final event instructions and start times

[Start lists](#)

[Online-results](#)

[LiveloX](#)

[In-detail map for arrival to the arena and parking](#)