



**FINNISH CHAMPIONSHIPS IN SPRINT  
ORIENTEERING AND IOF WORLD RANKING EVENT  
10th of May 2026  
KERAVAL, FINLAND**



**BULLETIN 1**

SK UUSI ry. will organize Finnish championships in sprint orienteering on Sunday 10th of May 2026 in Kerava, Finland. Qualifications will be held in the morning, and finals will be run in the afternoon.

**EVENT OFFICIALS**

Event Director: Esa Tihilä, [esatihila@yahoo.co.uk](mailto:esatihila@yahoo.co.uk), +358 40 480 7098

Course Setters: Tommi Hakuli, Antton Koivisto, Matti Kallio

Result Service: Samuli Seppälä

WRE Contact Person: Esa Tihilä, [esatihila@yahoo.co.uk](mailto:esatihila@yahoo.co.uk), +358 40 480 7098

Technical Advisor and IOF Event Advisor: Atte Lahtinen

Course Controller: Mika Kulmala, Rajamäen Rykmentti

**EVENT WEB SITES**

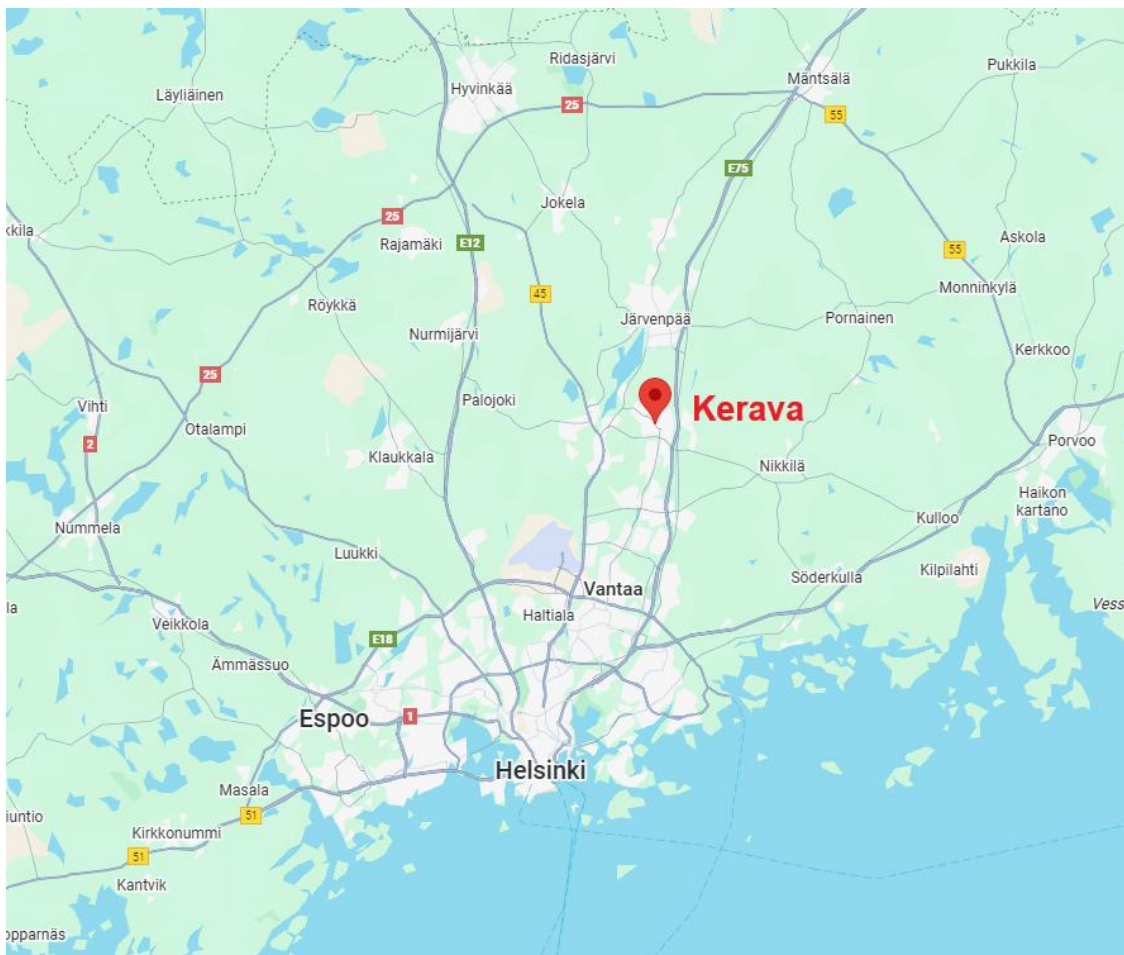
<https://skuusi.sporttisaitti.com/sm-sprintti-2026/>

[IOF Eventor - Event information: Finnish Championship, Sprint distance](#)

## VENUE

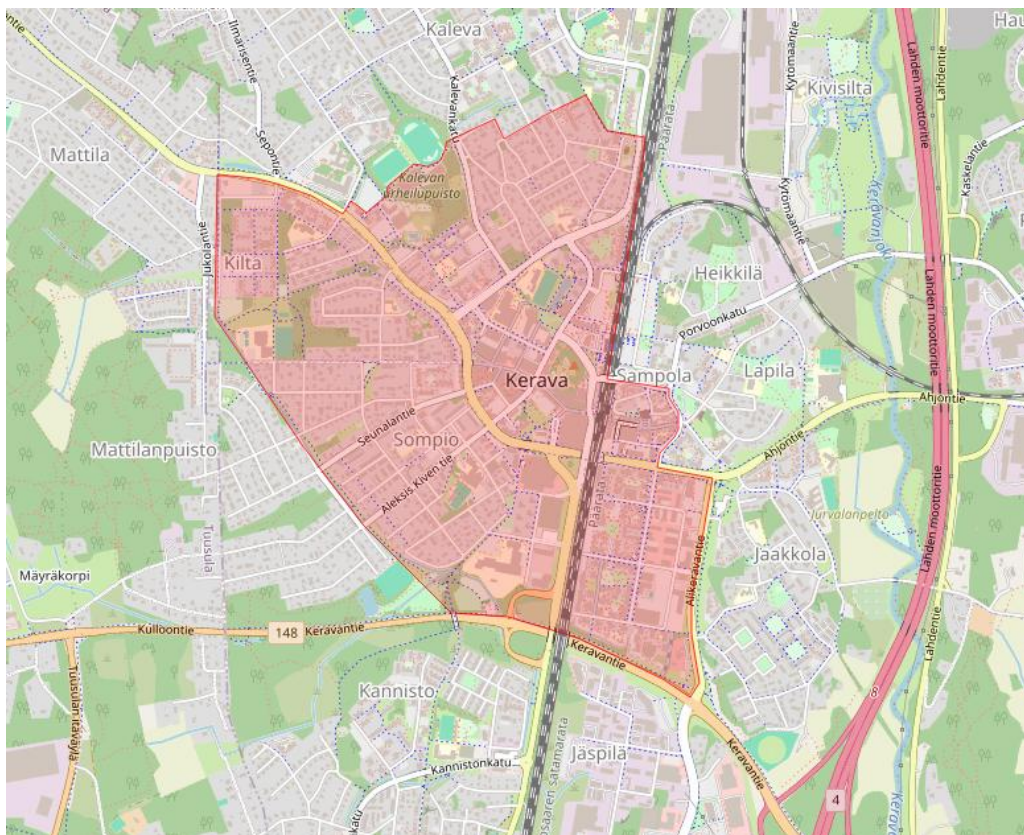
Event is organized in city center of Kerava about 30 kilometers north from Helsinki and about 15 kilometers (north-east) from Helsinki-Vantaa Airport. Arena location will be published in Bulletin 2. Information regarding arrival at the event either by train or by car will be published on the event website.

General map of the area



## GENERAL MAP OF THE REGION AND EMBARGOED AREA

The embargoed area is indicated on the map below. You can see the same information in Karttarekisteri (Finnish Map Registry). Participants of the event are not allowed to train orienteering in marked area any form prior to the event. Normal daily activities are allowed, however all activities and movement in marked area from 26<sup>th</sup> of April until 10<sup>th</sup> of May is fully forbidden.



Link to embargoed area:

<https://karttarekisteri.fi/index.php/pages/map/12336>

## EVENT INFORMATION

### COMPETITION RULES

The rules established by both the International Orienteering Federation and Finnish Orienteering Federation will be applied in the competition. WRE (M21 and W21) classes do follow primarily rules of IOF.



The IOF rules are available on the following website:

<https://orienteering.sport/orienteering/competition-rules/>

The special rules for Finnish Championships are available on the website (only in Finnish):

<https://www.suunnistusliitto.fi/kilpailu/sm-ohjeet/suunnistuksen-erillisohjeet/>

Spiked shoes and shoes with studs are forbidden in the competition. Competitors shall not use or carry any telecommunication equipment between entering the quarantine zone and reaching the finish in a race, unless the equipment is approved by the organizer. GPS-enabled devices (watches etc.) can be carried provided if not used for navigation and telecommunication.

However, the organizer has the right to specifically forbid the use of such equipment. The organizer may require competitors to carry a tracking device and/or a GPS data logger.

## **CLASSES AND WINNING TIMES**

M21 and W21

Classes M21 and W21 have WRE-status. Entry to the final competition implies entering the Qualification. Approximately 50 of the top performing athletes will advance to the A-final based on their qualification results. All participants not qualified to A-finals will be offered B-final. Detailed information will be disclosed in Bulletin 2.

Estimated winning time in qualification is 12-15 minutes and 12-15 minutes in final.

Start list for qualification will be formed based on world ranking points per 3<sup>rd</sup> of May, 2026 added with 200 (e.g. 45+200=245). If competitor has no world ranking points his/her position in start list for qualification is based on Finnish online ranking per 3<sup>rd</sup> of May, 2026.

Competitors who have highest ranking points will start first in their qualification. If there are multiple heats for qualification, they will be formed as equal as possible. Competitors who do not have either world ranking point or Finnish online ranking points will be receiving random starting time at the beginning of qualification.

## **PUNCHING SYSTEM**

The electronic punching systems EmitTag and Emit will be used.

All participants use Emit punching system in qualification.



EmitTag -punching system is in use in A-final for classes M21 and W21. Emit punching system is in use for B-final.

Each A-finalist will be provided with one EmitTag card by organizer. Competitor's own EmitTag card may be used as a secondary card. Number of secondary card does not need to be entered beforehand. EmitTag cards will be provided to all A-finalists in quarantine zone together with number bibs.

Rental Emit cards are available from the event organizer, fee of 6€. Need for Emit card rental must be issued with the entry. If the rental Emit card is not returned after the competition, there will be a charge of 80€.

## EVENT PROGRAM

Quarantine zone will be in use for classes M21 and W21 in qualification and A-final.

Start time	Additional Info	Distance to quarantine
Qualification starts 9:00am	quarantine zone will be closed at 9.00am	to be informed later on
A-finals starts 2:00pm	quarantine zone will be closed at 2:00pm	to be informed later on

Last start time is latest 17:50.

## ENTRIES AND ENTRY FEES

Entries and payments should be made primarily through IRMA service or alternatively via Eventor (those who don't have access to IRMA service). All WRE competitors make an entry to classes M21 or W21.

Entry fee in classes M21 and W21: 56€

Emit card number must be included in the entry. Need for Emit card rental must be issued with the entry. If Emit card number is missing, the organizer will reserve an Emit card and charge 6€.

The IOF World Ranking system only uses the Latin alphabet from A to Z. It is very important for all runners to check that the information about them is correct. Please check the following: the spelling of your first and last name, year of birth and nationality.





Payment details without access to IRMA are as follows (euros only):

Message: SM Sprint 2026 and name(s) of participant(s)

Account owner: SK UUSI ry. Osoite: c/o SK Uusi, Hiirimäki 15, 04380 TUUSULA

Bank name: OP POHJOLA, IBAN: FI12 5132 0520 1668 10, BIC: OKOYFIHH

Entries and payments must be made no later than 30th of April 2026 at 23:59 (Finnish time).  
No late entries are allowed.

### **IOF ID**

When registering via Irma, WRE athletes must have IOF IDs included in their Irma profile. This is automatically included in entries via IOF Eventor.

in case of not having IOF ID. It can be created at Eventor service:

<https://eventor.orienteering.org/Register>

### **TERRAIN**

The terrain consists mainly of urban areas with paved paths and lawns, and associated parklands.

### **MAP**

contour interval: 2 m, printed 5/2026.

Mapping by: Tommi Hakuli

Scale: 1:4000 in classes M21 and W21, Map size A4 in plastic cover.

### **NUMBER BIBS**

Number bibs for classes M21 and W21 for qualification and A-final are available at quarantine zone.

All B-finalists will use same number bibs in their final as they used in qualification. No safety pins provided by organizer.

### **WEATHER**

Weather in early May in Kerava can vary from 8 to 20 degrees Celsius from sunny to rainy.



## **FOOD AND REFRESHMENTS**

Restaurant and take-away café located at event center offering coffee, sandwiches, soup lunches, and beverages are available between 7.30am to 6pm. Lunch (approx. 12€) is served between 10am to 1.30pm.

## **ACCOMMODATION**

There are plenty of hotels in 5 - 20 km from event venue e.g. City of Tuusula, at Helsinki-Vantaa Airport, city of Vantaa and city of Helsinki. There are no hotels available in city of Kerava.

## **SHOWERING**

There is a possibility to shower indoors in the event center.

## **ARRIVAL TO FINLAND AND TO KERAVA**

No transport offered by the organizer. It is easy to access the competition area by public transportation (by train: [www.vr.fi](http://www.vr.fi) / Kerava) and by car. Distance from Helsinki-Vantaa Airport is approx. 15 kilometers. Instructions for arriving by public transport will be announced on the event website before the competition.

## **VISA REQUIREMENTS**

According to current regulations, citizens of designated countries must obtain a visa to enter Finland. Please check the following website for more information: <https://um.fi/entering-finland>. Visas should be applied for at your closest Finnish embassy. Please note that conditions of entry may change. All participants are advised to keep themselves updated on the situation by consulting their local Finnish embassy.

## **TRAINING OPPORTUNITIES**

Model training possibilities are published on the event website.

<https://skuusi.sporttisaitti.com/sm-sprintti-2026/>

## **FINAL EVENT INSTRUCTIONS AND START TIMES**

There will be more information on the event website

<https://skuusi.sporttisaitti.com/sm-sprintti-2026/> closer to the date of the competition.

Bulletin 2 will be published on the 4th of May 2026.