

Open doors, visitors and active field season 2022 after the pandemic

Open Doors on RV Aranda 25 August, on the Baltic Sea Day had nearly 1000 visitors, who could learn about the ship, and marine and fisheries research.

Tvärminne Zoological Station celebrated its 120-year anniversary 3. September with an Open Door event. Researchers and their work, the Baltic Sea and RV Augusta were presented.

Husö Biological Station gathered more than 300 visitors to the station and research on their Open Doors event 16.-18. September.

The Baltic Sea panel visited the Archipelago Research Station at Seili on the Baltic Sea Day 25. August.



Backdeck of RV Aranda during the Open Doors. Photo Mika Raateoja.

Ferromanganese summer

In summer 2022, Geological Survey of Finland (GTK) was busy collecting ferromanganese concretions on [RV Geomari](#) on several sites along the Finnish south coast, from the Eastern Gulf of Finland to the Archipelago Sea. The concretions were collected for project [Fermaid](#), funded by the Academy of Finland, and for project [FeCoVERY](#), funded by the Finnish Natural Resources Research Foundation.

Read more [HERE](#).



Who's who in FINMARI



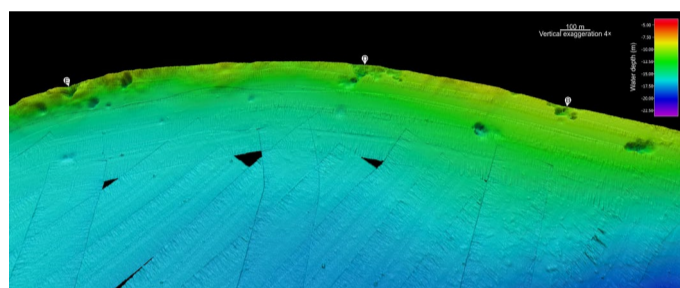
Timo Tamminen Research Professor

The founder and leader of FINMARI since 2014 until 2021, retired 1. October. Timo worked for more than 40 years in Baltic Sea research, leading >25 research initiatives. "Now I am going to focus on literature, music, classic boats and motorcycles, grandchildren, and messing around with miscellaneous activities on our island in the Archipelago Sea" he says.

Marine Research

Submarine groundwater discharge impacts biogeochemistry and microbial communities of the seafloor.

A newly published study shows that submarine groundwater discharge can lead to the focusing of biogeochemical reactions and the microbial community in a thin zone at the sediment surface. This has consequences for the production of CH_4 , NH_4^+ and DIC in the sediments. Read the scientific publication [HERE](#).



Fisheries research

Luke has tested the effectiveness of novel mobile and raft-mounted Acoustic Deterrent Devices (ADDs) against seal-induced catch losses in salmon trap-net fisheries. The study suggests that an ADD is a useful and economically viable mitigation tool for reducing seal-induced catch losses in salmon trap-net fisheries with pontoon traps. Read more [HERE](#)



Studying a heat wave in mesocosms

The effects of a heat wave on a marine ecosystem has been studied using mesocosms at SYKE. The experiment involved three European research groups, which participated with the support of [JERICO-S3](#) Transnational Access. This experiment was already the third in the series of JERICO-AQUACOSM collaborations. Read more [HERE](#).

From the world: New calls for European Transnational Access in 2023

AQUACOSM-plus Research Infrastructure calls for 2023 are opening soon. The transnational Access provides access to >60 different leading and highly complementary mesocosm facilities located throughout Europe.

Please follow the TA website [HERE](#)

JERICO Research Infrastructure call is open from 20 October to 21 November 2022. The Transnational Access provides free of charge access to high-quality infrastructures and support services at multi-disciplinary facilities consisting of a range of gliders, fixed platforms, ferryboxes, cabled observatories, HF radar, benthic stations, and bio-sensors.

Read more [HERE](#)