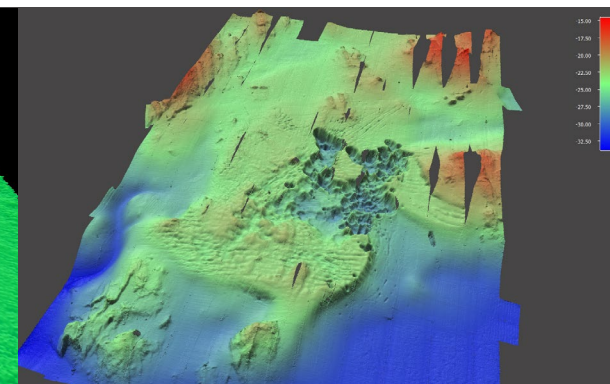
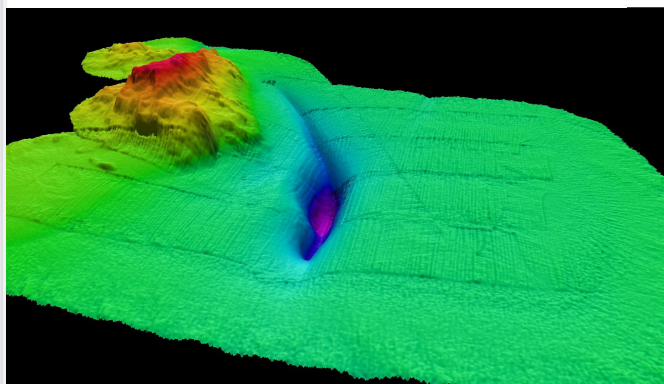


Kongsberg GeoSwath 4

Multibeam echosounder

Multibeam echosounder is used to map the water depth, and the shape of the seafloor. The data produced by this method provides an accurate 3D view of the seabed, as well as information on seabed roughness and even single objects on the seabed.

- 125 kHz operating frequency
- Simultaneous swath bathymetry and side scan sonar mapping system
- Seabed coverage up to 12 times water depth
- Depth resolution 6 mm
- Maximum depth range 200 m
- [GeoSwath 4](#) at Kongsberg web site



Geological
Survey of
Finland (GTK)