



# FINMARI news flash

June 2022

## Summer blooms of cyanobacteria: forecast for 2022

Cyanobacterial bloom situation in its coastal waters will be reported weekly as of 2<sup>nd</sup> of June, until the end of August. The forecast predicts considerable risk of blooms due to the low oxygen and high phosphorus conditions in the Baltic Proper. Read more [HERE](#).



Cyanobacterial blooms in the Gulf of Finland in 2014  
Photo: Finnish Border Guard.

## Observation platforms: The benthic lander is in buildup

Instrumentation of the benthic lander has started. Its first deployment to the seafloor will take place later this year. After that the lander is used to study the benthic-pelagic fluxes in the sea with its sensors (pCO<sub>2</sub>, CH<sub>4</sub>, O<sub>2</sub>, H<sub>2</sub>S/pH/T, PO<sub>4</sub>, central logger, acoustic modems, 3D profiler, ADCP SeaWatch 1200 kHz, and LISST-100X particle detection). The lander is collaborative purchase of GTK and SYKE, and FMI will participate in deployments with their independently moored instruments. Read more [HERE](#)



Photo Katri Kuoppa

## Events:

### 100 years of water level observations 7.6.2022: seminar and open doors

Finnish Meteorological Institute organizes a seminar at the main library of Oulu and open doors at the Oulu mareograph, to celebrate 100-year long history of water level observations. Read more [HERE](#)

### United Nations World Oceans Day 8.6.2022

Launch of the UN Decade of Implementation for Finland's Marine Research Program, at the National Museum in Helsinki. Read more [HERE](#)

### Passion for the Baltic, photo exhibition is open until 30. 11.2022

at Luomus, Helsinki. The exhibition celebrates 120 years of research at the Tvärminne Zoological Station. Read more [HERE](#)

### Baltic Sea Day 25.8.2022

Aranda open house /Avoimet ovet, and much more. Read more [HERE](#)

Who's who in FINMARI

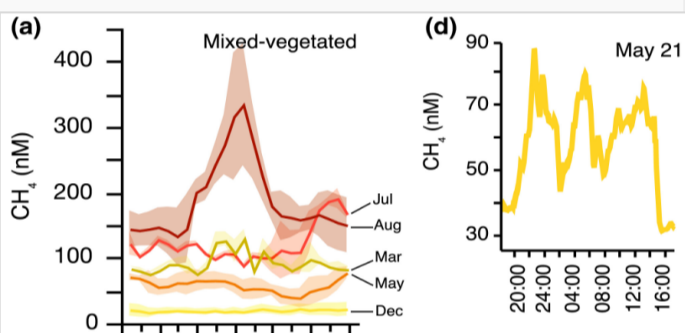


Photo Pata Deerman

**Joanna Norkko**  
Research Coordinator  
Tvärminne Zoological Station  
University of Helsinki

Joanna is marine benthic ecologist with an interest in how environmental change affects ecosystem functioning ([www.coastclim.org](http://www.coastclim.org)). In addition to the Baltic Sea, she has worked in New Zealand and Antarctica. Joanna is the vice director of FINMARI. Read more about her [HERE](#)

## Marine research: High variation of methane in coastal ecosystems



A newly published study shows that in coastal habitats, CH<sub>4</sub> distribution is spatially patchy over meter-scales and highly variable in time. The finding points out the challenges in estimating greenhouse gas emissions across vegetated coastal ecosystems. See more [HERE](#)

## News from the world: Climate change in the Baltic Sea region

A new assessment summarizes the effects of global warming on the climate of the Baltic Sea region. The study is an update of the Second Assessment of Climate Change BACC II, published in 2015 and focuses on the atmosphere, land, cryosphere, ocean, sediments, and the terrestrial and marine biosphere. See more [HERE](#)



## FINMARI Researcher Day 2022: session recordings and posters are available

The virtual Scientific event in March had > 150 attendees to listen to high-class keynotes and presentations on multidisciplinary marine observations and biodiversity, and [posters](#) on FINMARI web page. All sessions are available in the [YouTube channel of FINMARI](#).

## Open positions:

**Researcher / Ocean modeller** at the Finnish Meteorological Institute. Application deadline 7.6.2022. Read more [HERE](#)

**Postdoctoral researcher position on sea ice modelling** at the Finnish Meteorological Institute. Application deadline 10.6.2022. Read more [HERE](#)

**Postdoctoral researcher position on autonomous marine observations** at the Finnish Meteorological Institute. Application deadline 12.6.2022. Read more [HERE](#)

**Associate Professor/ Full Professor in Coastal Ecology** at the University of Helsinki. Application deadline 19.6.2022. Read more [HERE](#)

