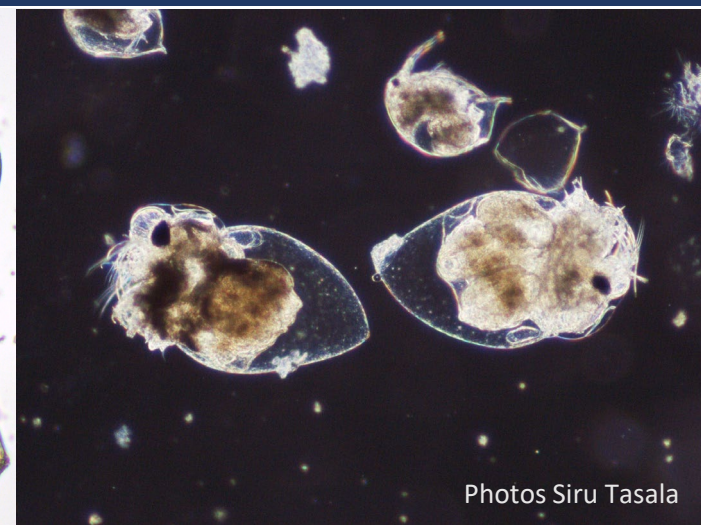


# Microscopy

Microscopy is used widely for research and monitoring of phytoplankton, zooplankton, microplastics, histology, benthos. The instruments range from light microscopes to digital instruments equipped with advanced accessories, such as video, still image and image analysis capabilities.

- Inverted microscopes 10x (max magnification 400X)
- Stereo microscopes 10x
- Epifluorescence microscopes 3x
- Stereo epifluorescence microscopes 2x (max magnification 640X)
- Cameras for microscopy 8x with high resolution and clear contrast
- Leica: <https://www.immunodiagnostic.fi/>
- Contact person: Siru Tasala (firstname.surname@syke.fi)



Finnish  
Environment  
Institute