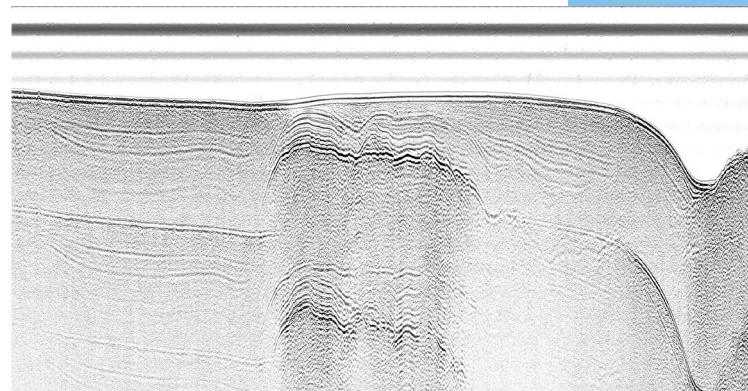


SIG Pulse S1

Low frequency seismic sonar

Low frequency, seismic reflection survey provide information on the thickness and internal structures of coarse sediment (sand, gravel, till) units of the seabed. It provides also information on bedrock surface.

- Sparker-type low-frequency seismic equipment
- Power selections: 20 – 300 Joules
- Applications : 0-100 m shallow and very shallow water
- Penetration/resolution : 240 ms in 90 meters of water depth with resolution of 35 cm
- [SIG Pulse S1](#) sonar at web site



Geological
Survey of
Finland (GTK)