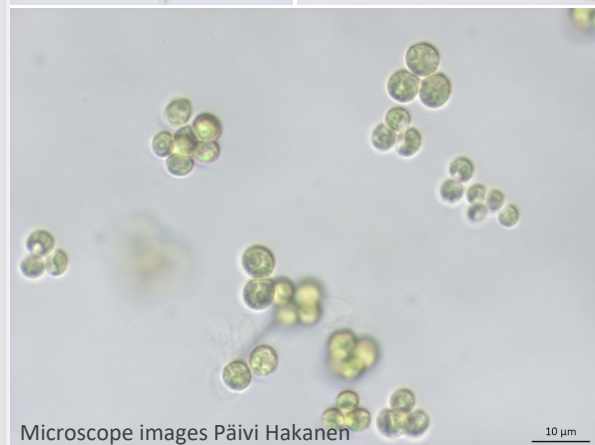


FINMARI culture collection

Collection of Baltic Sea phytoplankton, including some heterotrophic dinoflagellates.

The cultures are used for ecological and applied research, instrument testing, harmonization of methods and education.

- Includes approx. 100 strains and 30 taxa
- The strains are maintained in SYKE Marine Research laboratory and [Tvärminne Zoological Station](#) (UHEL).
- Cultivation in water phase at 6 psu, at +4 /+16 °C
- The strains have been used in approximately 60 publications since 2014
- The strains are available for research in collaborative projects
- marinefinland.fi
- Contact: Heidi Hällfors SYKE (firstname.surname@syke.fi)
Joanna Norkko UHEL (firstname.surname@helsinki.fi)



Microscope images Päivi Hakanen

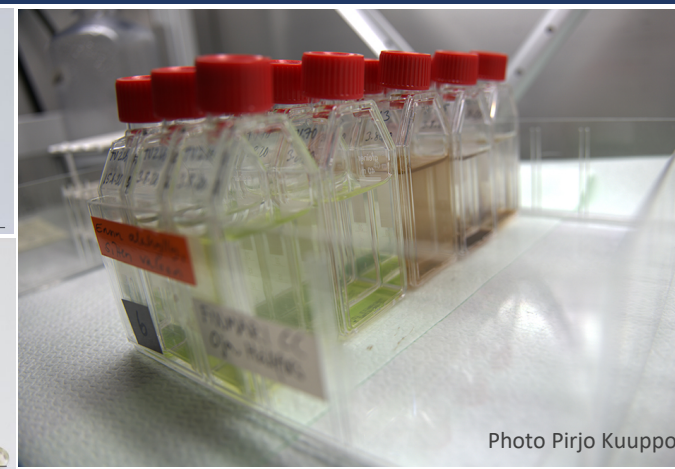


Photo Pirjo Kuuppo



Photo Pirjo Kuuppo

Finnish
Environment
Institute



S Y K E

Tvärminne
Zoological
Station



HELSINGIN YLIOPISTO
HELSINGFORS UNIVERSITET
UNIVERSITY OF HELSINKI

