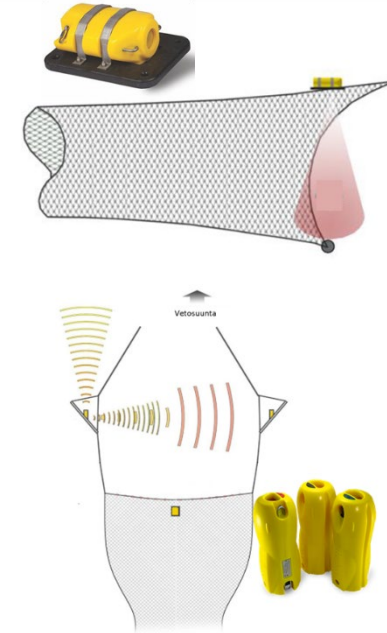
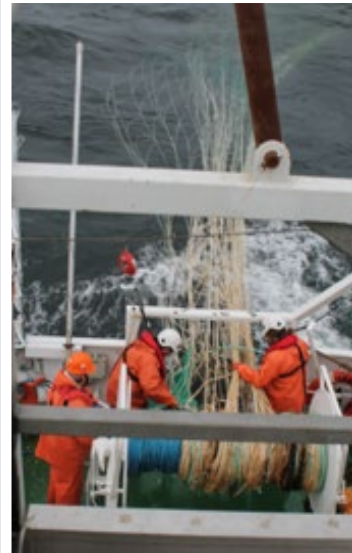


# Pelagic trawl and sensors

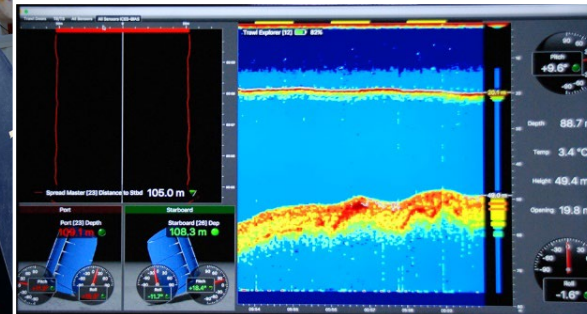
Pelagic trawl catches fish, such as herring, sprat and stickleback in the mid-water of Baltic Sea.

Trawl sensors shows the trawl performance such as opening and fish passing into the gear, headrope depth, temperature and distance to the seabed.



Natural  
Resources  
Institute  
Finland

**Luke**  
NATURAL RESOURCES  
INSTITUTE FINLAND



Fotö 3.2 pelagic trawl and accessories:

- Two identical trawls, doors, trawl drum, weir winches.
- Towed behind the vessel and spread by trawl doors, and the stretched mesh size in the codend is 12 mm (6 mm knot to knot) – capture also small fish.

Marport trawl sensors:

- Trawl eye was attached to the headrope of the trawl, and it shows a depth, temperature, sensor position (pitch and roll)
- Door sensors – show depth, pitch and roll, and distance between trawl doors.