

### Baltic Sea environment

#### The algae season is getting longer: blooms continue in autumn

Neither long-term monitoring nor a human memory shows cyanobacterial blooms lasting late in the autumn. This year, very abundant algal blooms were observed even at the beginning of October in Husövikens's bay, the archipelago of Åland.

[Read more HERE](#)



© Tony Cederberg



© D. Kampantais



© P. Saari

### Ongoing research

#### Impact of Ferry Traffic Waves on the Littoral Zone of the Baltic Sea

How do ferry waves shape coastal ecosystems? This is studied in Korpoström, the field station of Åbo Akademi University. The research project is part of the PhD Pilot of the Digital Waters. It is financed by the Ministry of Education and Culture, and the Research Council of Finland.

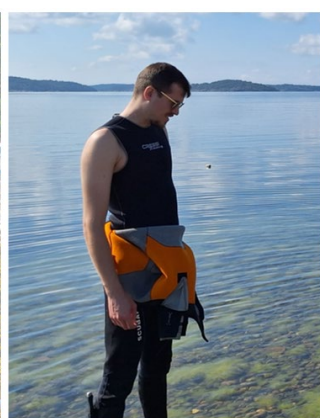
[Read more HERE](#)

### User story

#### Working in the Archipelago Research Institute at Seili

We interviewed Lars Pelikan and Kjell Ratajczak, who are PhD students in the research project of professor Veijo Jormalainen at the Department of Biology, University of Turku. They both are doing their field work and scientific experiments in the Archipelago Research Institute at Seili.

[Read more HERE](#)



### Who's who in FINMARI

#### Anna Törnroos-Remes Professor in Marine Ecology, Åbo Akademi University

Anna is the Professor of Marine Ecology ÅAU and lead the Centre for Sustainable Ocean Science SOS. Anna's research combines marine ecology - biodiversity and ecosystem functioning - with interdisciplinary work on human-ocean relationships and solutions to complex marine socio-ecological challenges.

[Read more HERE](#)

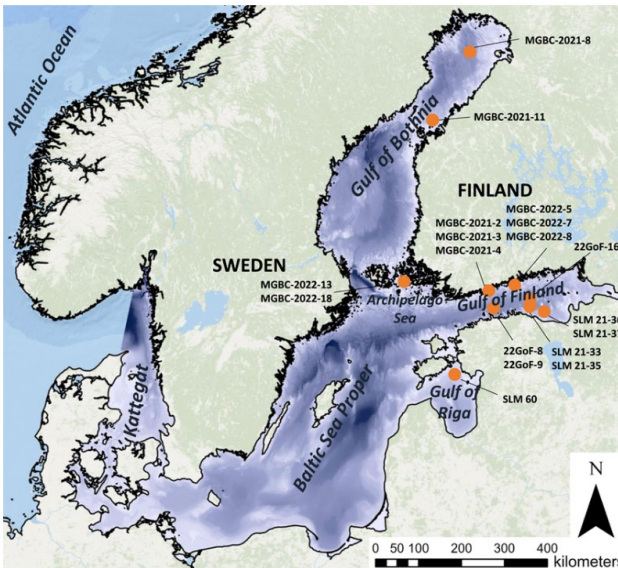
### New publication

#### Centennial to millennial-scale paleoenvironmental record from a coastal iron-manganese concretion

by Joonas Wasiljeff *et al.*

The study established the highest-resolution geochronology ever for a ferromanganese concretion. The concretion records 7000 years of variability in atmospheric circulation and temperature, glacio-eustatic land uplift, and bottom-water oxygenation in the northern Gulf of Finland, showing that FeMn concretions are valuable archives of global to basin-scale paleoenvironmental changes and anthropogenic impact.

The article is published in Communications Earth & Environment 6 (2025) DOI <https://doi.org/10.1038/s43247-025-02741-z>



Locations of Fe-Mn concretions in the Baltic Sea. Source: Wasiljeff *et al.* 2024

Geochemistry, Geophysics, Geosystems 25 DOI: [10.1029/2023GC011366](https://doi.org/10.1029/2023GC011366)

### Upcoming events

#### FINMARI Researcher Day 2026

18.-19.3.2026  
in University Campus,  
Turku.

[Follow accumulating information HERE](#)



#### A visit and a workshop in Tara Polar Station

14.1.2026 in Oulu

Registration deadline  
15.12.2025

[Read more HERE](#)



### Recent and upcoming PhD defenses

#### Okko Outinen, Syke, 26.9.2025

Monitoring, assessment, and management of the spread of aquatic non-indigenous species associated with maritime traffic :Interdisciplinary implications on a multilateral issue. University of Helsinki.

[Read more HERE](#)

#### Clio Hall, Tvärminne Zoological Station, 7.11.2025

Climate change in the Baltic Sea: warming and freshening impacts on plankton food web interactions. University of Helsinki.

[Read more HERE](#)

#### Linus Lähteenmäki, Åbo Akademi University, 4.12.2025

There and back again – the spawning migration of anadromous brown trout (*Salmo trutta* L.) in northern Europe. Åbo Akademi University.

[Read more HERE](#)

#### Catharina Uth, Tvärminne Zoological Station, 19.12.2025

The role of phytoplankton biodiversity in coastal organic carbon dynamics. University of Helsinki.

[Read more HERE](#)