

Imaging FlowCytoBot (IFCB)

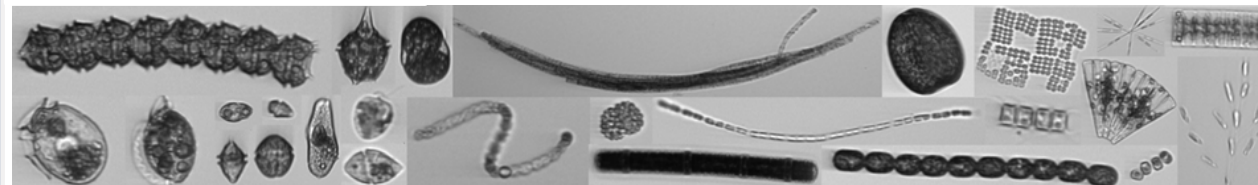
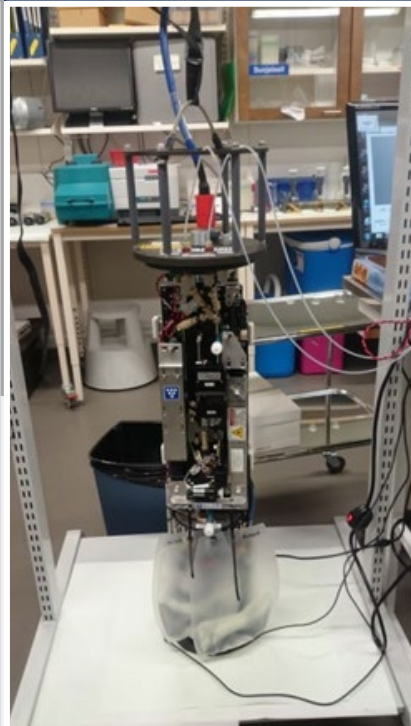
In-situ automated submersible imaging
flow cytometer

Target organisms: phytoplankton

Size range: < 10-150 μm

The instrument combines high-quality imaging, cytometry automatic sampling and some tools for the subsequent image analysis.

- Can be operated with chlorophyll *a* trigger to prevent non-living material to be imaged
- Images are later identified either manually or automatically based on training data sets
- Works in automated mode by remote desktop connection, takes 5-ml samples at 20 min intervals
- Link to more technical details, specifications on the [manufacturer's web page](#)
- Contact persons: Kaisa Kraft, Sanna Suikkanen (firstname.surname@syke.fi)



Finnish
Environment
Institute



S Y K E