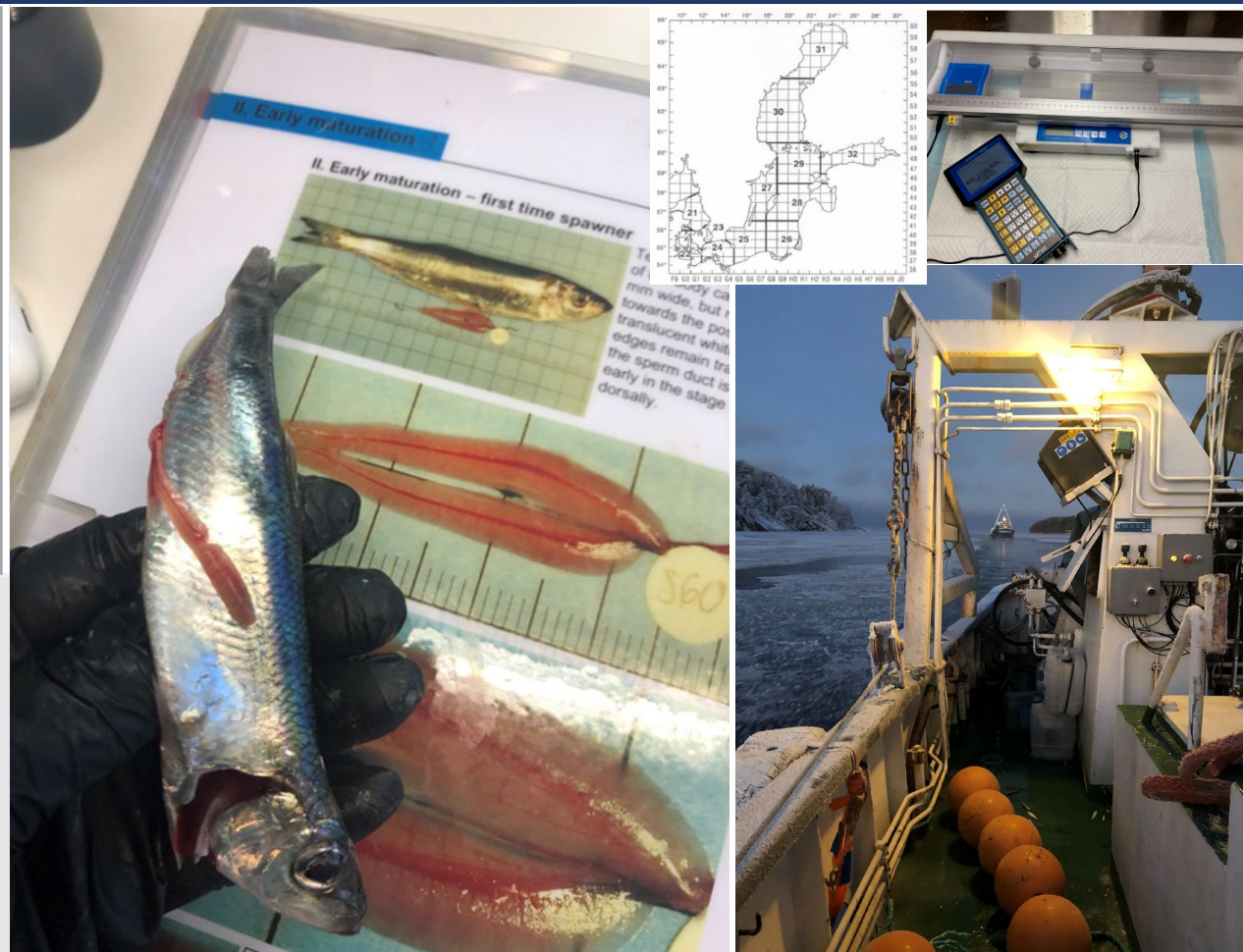


# Luke coastal field stations

## Catch sampling (EU-DCF)

Biological data sampling from commercial marine fishery catches is carried out from four coastal field stations covering the ICES areas SD29-SD31. Samples are collected from economically important species directly and processed in the field stations using the RUFCO fish measuring equipment. Functioning cooperation network with commercial fishers.

- Four field stations (Viikki, Parainen, Vaasa and Oulu)
- Samples taken all year round of trawl fishing, fyke-net and gillnet
- About 100,000 samples of more than 200 catches yearly (Baltic herring, sprat, vendace, pikeperch, perch + by-catch, salmon and eel)
- RUFCO fish measuring equipment, including data recorder, measuring board and scale



Natural  
Resources  
Institute  
Finland

**Luke**  
NATURAL RESOURCES  
INSTITUTE FINLAND