



Bulletin 1-2

European Ski Orienteering Championships
Junior World Ski Orienteering Championships
European Youth Ski Orienteering Championships
Ski Orienteering World Cup

19.-23.3.2025 - Posio, Finland



ESOC - JWSOC - EYSOC - Posio, Finland

Welcome to Posio!

We are excited to organize international ski orienteering competitions in Posio. It is a great honour to have received the most valuable ski orienteering competitions of this winter, and we want to thank IOF and the Finnish Orienteering Federation for this trust. Posio is a small and beautiful town in Finnish Lapland with 100% snow guarantee. The actual event will be a joint effort of all the townspeople. We wish everyone warmly welcome to Posio in 2025.

- Antti Häkämies, Event Director of ESOC 2025 -

Event programme

	ESOC/WC	JWSOC	EYSOC
Wednesday 19.3.2025	Model event	Model event	Model event
Thursday 20.3.2025	Sprint relay	Relay	Relay
Friday 21.3.2025	Sprint (Interval start)	Sprint (Interval start)	Sprint (Interval start)
Saturday 22.3.2025	Middle (Interval start)	Middle (Interval start)	Middle (Interval start)
Sunday 23.3.2025	Long (Interval start)	Long (Interval start)	Long (Interval start)

Venue

Event center & Competition center address:
[Koulutie 2 D, 97900 Posio](#)



Competition venue and Kotivaara

Embargoed areas

Embargoed areas can be found on IOF Eventor. Click on the relevant area to view detailed information regarding the embargo:

<https://eventor.orienteering.org/Events/Show/8420>



ESOC - JWSOC - EYSOC - Posio, Finland

Classes and participation restrictions

ESOC/JWSOC/EYSOC has different classes: W21, M21, W17, M17, W20, M20

All competitors represent a National Federation.

A competitor may represent only one National Federation during any one 12 month period running from November to October. Competitors shall have full passport-holding citizenship of the country of the National Federation they are representing.

ESOC/WC:

Each Federation may enter a team of an unlimited number of competitors and a number of team officials. Each Federation may enter up to 6 women and 6 men in each individual competition. In addition, each Federation may enter up to a further 2 women and 2 men, who qualify for the Women U23 and Men U23 classes respectively.

In the Sprint Relay, each Federation may enter up to 3 teams, each consisting of 2 competitors. Each team must contain at least one woman. Athletes entered to the JWSOC or the EYSOC may complement Sprint Relay teams. All competitors must have a valid IOF Athlete Licence. Please ensure that the Athlete Licence fees are paid before the competitions.

JWSOC:

Each Federation may enter a team of up to 14 competitors - up to 7 women and up to 7 men - and an unlimited number of team officials.

In each individual competition, each Federation may enter up to 6 women and 6 men. In the relay, each Federation may enter up to 2 women's and 2 men's teams, each consisting of 3 team members.

If a Federation is unable to make up full relay teams, it may form incomplete teams or teams with competitors from other federations. Under no circumstances may persons, other than competitors entered for the competition, participate in the competition, with the exception of athletes entered to the EYSOC, who may complement JWSOC relay teams.

EYSOC:

Competitors representing member Federations of the IOF, defined by the International Olympic Committee as belonging to the European continent, can compete in EYSOC. Competitors representing other member Federations of the IOF can participate in EYSOC but will not be eligible for European titles, medals or diplomas.

Each Federation may enter a team of up to 14 competitors - up to 7 women and up to 7 men - and an unlimited number of team officials. For each individual competition a Federation may enter a maximum of 6 competitors in each class.

In the relay, each Federation may enter up to 2 women's and 2 men's teams, each consisting of 3 team members.

Entries

Entries are to be registered by team managers via IOF Eventor.

The following information is required at the latest by 19th January 2025 (-2 months):

1. Number of participants (men, women).
2. Number of relay teams.
3. Number of team officials.
4. Team manager's name, address, e-mail address and mobile telephone number.

This information should also be sent to: Event Secretary satu.teperi@gmail.com

The following information is required at the latest by 9th March 2025 (-10 days):

5. Name and gender (man, woman) of the participants.
6. Names of the team officials.

Late Entries:

Late entries and changes to registered entries will be possible up until 15.00 (UTC+2) on 19th March 2025. These should be sent directly to the event organizer who will then register the details in IOF Eventor.

Entry fees

ESOC/WC

	Regular Entry until 19.1.2025	Late Entry until 9.3.2025	Very Late Entry until 19.3.2025
Accreditation fee (competitor)	75€	+20 %	+50 %
Accreditation fee (team official)	100€	+20 %	+50 %
Entry fee per competition	75€ (Sprintrelay: 150€/team)	+20 %	+50 %
Name change			10€

JWSOC & EYSOC

	Regular Entry until 19.1.2025	Late Entry until 9.3.2025	Very Late Entry until 19.3.2025
Accreditation fee (competitor)	75€	+20 %	+50 %
Accreditation fee (team official)	100€	+20 %	+50 %
Entry fee per competition	55€ (Relay: 165€/team)	+20 %	+50 %
Name change			10€

The accreditation and entry fees include access to the race venues, the model event, any mandatory transport, EmiTag rental, team official meetings and competition maps.

Payments

Following the deadline for registering the number of participants and team officials (-2 months), the event organizer will issue invoices for accreditations, entry registration and waxing areas.

Invoices should be paid in full at the latest by 5th February 2025 (-6 weeks).

For changes made after this date, the payment/refund of fees is to be made at the event secretariat upon arrival at the competitions. A penalty fee will be liable for late payments.

Accommodation

No official event organizer accommodation is organized.

For accommodation check out following options:

For accommodation support you may contact: henrikvonenke@hotmail.de

Accommodation in Posio: www.posiolapland.com/accommodation/

Himmerki: www.himmerki.com/

info@himmerki.com

puh. 0440 352 602

Wilderness Hotel Kiri: <https://www.kirikeskus.fi/en/>

National youth centre Oivanki: www.oivanki.fi/en/

Booking: www.booking.com/city/fi/posio.fi.html

Airbnb: www.airbnb.fi/posio-finland/stays

Ruka/Kuusamo is about 45-60minuted drive from Posio and there are also plenty of options for accomodation: www.ruka.fi/en/accommodation

Meals

Meals will be available at the venue:

- Lunch 10.30-17.00 12€
- Race Cafe open 09.00-17.00

Travel information

Simplest way to get to Posio is by car. Flying to Kuusamo (ca.1hr from Posio) or Rovaniemi (ca.1hr 30min from Posio) and then getting a rental or coming by bus is also an option.

For support you may contact: henrikvonenke@hotmail.de

Waxing facilities and ski waxing service

Waxing facilities are available near the competition arena right next to the quarantine area. Electrical connections and heating is provided. 15m² and 10m² areas are available at the waxing facility. Facility is lockable but the areas are only separated by light walls. Price for one 15m² waxing area is 600€ and the 10m² price is 500€. Availability is first come-first served.

Bookings are made by sending email to: henrikvonenke@hotmail.de

Ban of fluorinated waxes

All waxes containing fluoride are banned from IOF competitions.

Map scales

Distance	Map scale / contour interval
Relay	1:10 000 / 5m
Sprint and Sprint relay	1:5000 / 5m
Middle	1:10 000 / 5m
Long	1:15 000 / 5m

All maps are A4 size (21 x 30 cm) with a 5-metre contour interval.
All courses will be according to the rules.

Winning times

	ESOC/WC	JWSOC	EYSOC
Thursday 20.3.2025	Sprint relay 6-8min/each leg 36-48min overall	Relay 30-35min/each leg 95min overall	Relay 30-25min/each leg
Friday 21.3.2025	Sprint 12-15min	Sprint 12-15min	Sprint 8-12min
Saturday 22.3.2025	Middle 40-45min	Middle 25-35min	Middle 20-25min
Sunday 23.3.2025	Long 85-95min	Long 65-75min	Long 40-45min



ESOC - JWSOC - EYSOC - Posio, Finland

Terrain

20.3.2025	Steep but lesser height differences, flat marsh area.
21.3.2025	Steep but lesser height differences, flat marsh area.
22.3.2025	Mild height differences, various forest types.
23.3.2025	Considerable height differences, various forest types.

Punching system

EmiTag (EMIT) will be used.

Opportunities for training

Model event will be held in Kirintövaara 19.3.2025. Kirintövaara has also groomed tracks over 20km.

Ski track map: www.infogis.fi/posio/

There will be a training track network with different training sessions in Kuusamo around the New Year. Trainings are organised by neighbouring orienteering club Kuusamon Erä-Veikot.

More information will be updated on their web page:

<https://kev.fi/suunnistus/hiihtosuunnistus-ski-o/>

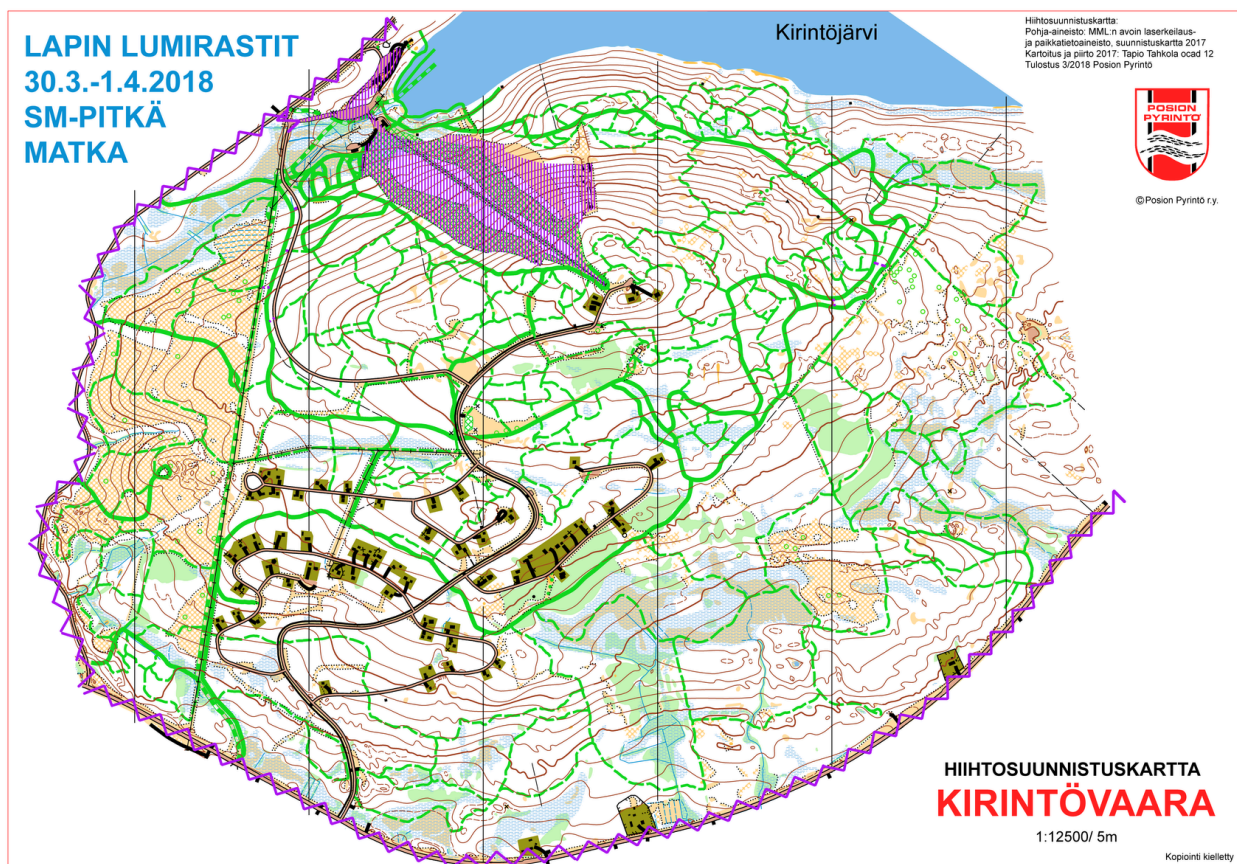
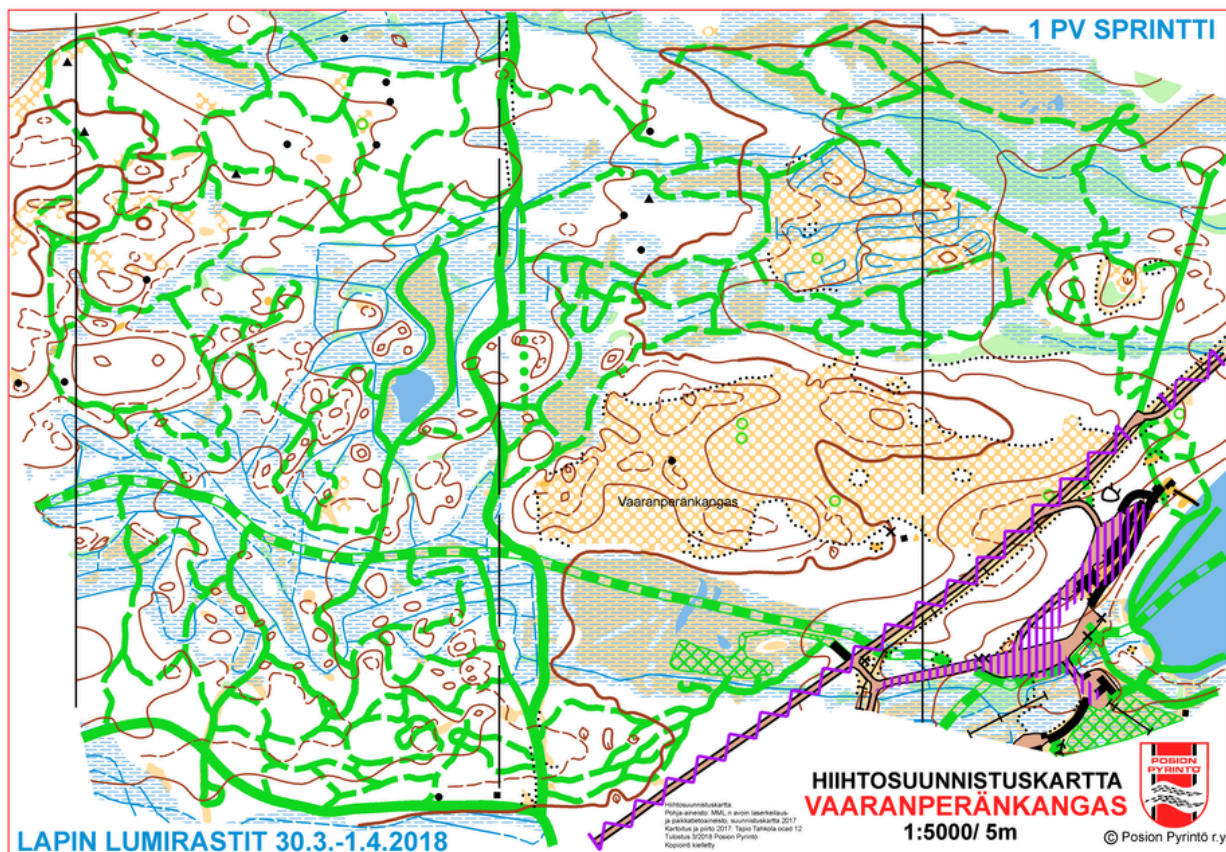
Visa requirements

Information regarding requirements for visas can be found at the following sites:

<https://finlandabroad.fi/frontpage>

<https://um.fi/visa-to-visit-finland>

Previous orienteering maps



Media contacts and accreditation

Chief of media: Vesa Huokuniemi vesa.huo@hotmail.com , +358 400 673454

Event Secretary: Satu Teperi satu.teperi@gmail.com , +358407415361

Organisers

Posion Pyrintö ry.

Event Director: Antti Häkämies, Email: a_hakamies@hotmail.com

Support functions: Henrik Enke, Email: henrikvonenke@hotmail.de

Technical support: Tuomas Laatikainen

Map: Tapio Tahkola

Tracks: Jarmo Pyhtinen

Media: Vesa Huokuniemi

Course setters: Santeri Aikio, Aki Aikio

Event controllers

IOF Senior Event Adviser:

Sture Noren (SWE) Email: sture.noren@outlook.com

National Controller:

Tapani Partanen (FIN) Email: tapani.partanen@cleanosol.fi, +358 40 754 4024

Contact information

Address: Event Secretary, Satu Teperi, Posion Pyrintö, Aholantie 33, 97900 Posio, Finland

Telephone: +358407415361

IOF Eventor: <https://eventor.orienteering.org/Events/Show/8420>

E-mail: satu.teperi@gmail.com

Web page: <https://lapinlumirastit.fi/2025/>

Summary of important dates

The final dates for registering entries, booking accommodation etc. are summarised in the table below. Please note the additional fees that apply for late entries.

- Entry registration 19.1.2025 (-2 months) – phase 1
- 9.3.2025 (-10 days) – phase 2
- Payment of entry fees (closing date) 5.2.2025
- Late entry 19.3.2025
- Event/competition dates 19-23.3.2025

Posio Lapland

Experience diverse nature, local delicacies, genuine culture, art and design in Posio – a small nature-loving community where enchanting landscapes inspire you to rediscover the essentials. In Posio, nature embraces, carries through the seasons and gives life its pace. Hurries vanish in the tranquility of nature and amongst the locals. Here, anyone can find their own rhythm, be it fast or slow.

Posio is better known as the hidden gem of Finnish Lapland. Away from the highways Posio's travel sector has developed to a somewhat different direction than other bigger destinations. The tourism companies are rather small family businesses operated by locals. Hotels and cabins are situated in their own privacy by lakes, in forests or forested areas. Hence the sense of space and silence are very much part of the experiences offered to tourists. International tourism to Posio has been growing steadily, and after the coronavirus pandemic Posio has caught the attention of tour operators looking for non-touristic, authentic and sustainable destinations.



Suomen
Suunnistusliitto



ESOC - JWSOC - EYSOC - Posio, Finland