



D/EHLIE

In pursuit of perfection



AW19
TEAMWEAR
CROSS COUNTRY

BRAND STORY

Dæhlie's technical innovation, functional materials, and clean design is perfectly balanced throughout our wide range of products. Our goal is to provide our customers with the best products helping you perform at your very best regardless of season.

We make no compromises to performance.

We are here to maximize your performance 365



DÆHLIE TEAMWEAR

All our products can be designed to your teams needs. Our talented designers will create you your unique design from your brandmanual and preferences.

All will be sublimated to the garments without limitations on colours or creativity. It is also possible to provide us with your own sketch ideas and we can develop these to your customized products.

Need more info?

Contact our talented team at: custom@dahlie.com

Or visit us at:

www.dahlie.com/bd_no/custom-design-1.no

MICROFIBER

Microfiber is a durable and light weight material that is optimal for crosscountry skiing. The fabrics is vindproof due to its conctruction and is treated with durable water repellancy. These products are created to suit your teams needs, comfort, quality, sizes, good visuality in team design, logo placement and perfected to usage area. A good choice for many.

TEAMWEAR

321557 Jacket Micro Allround

XS - S - M - L - XL - 2XL - 3XL - 4XL

321558 Jacket Micro Allround Women

XS - S - M - L - XL - 2XL - 3XL - 4XL

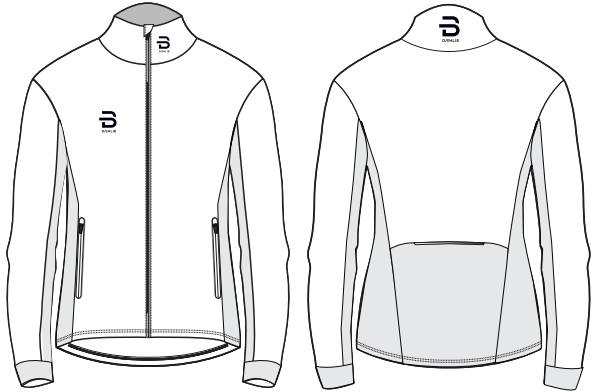
321559 Jacket Micro Allround Junior

116 - 128 - 140 - 152 - 164

Features:

A comfortable jacket in Microfiber provides good protection during outdoor activities.

- Wind and water resistant Nylon with mesh inside
- Elastic back for enhanced mobility
- YKK zippers
- 2 hand pockets
- Reflective details in front and back
- Articulated sleeves
- Elastic waist adjuster
- Comfortable elastic cuffs
- Chin guard with stormflap
- Regular fit



321563 Pant Micro Allround

XS - S - M - L - XL - 2XL - 3XL - 4XL

321564 Pant Micro Allround Women

XS - S - M - L - XL - 2XL - 3XL - 4XL

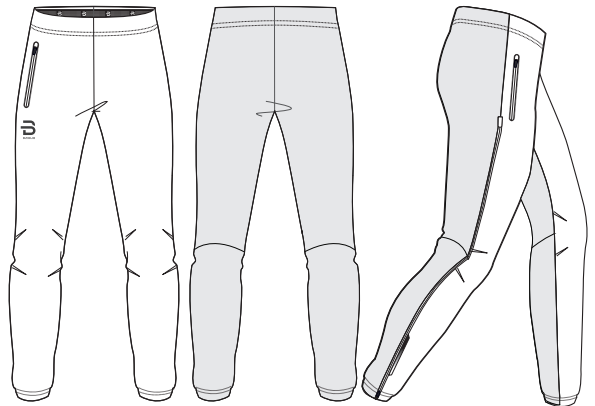
321565 Pant Micro Allround Junior

116 - 128 - 140 - 152 - 164

Features:

A comfortable pant in Microfiber and comfortable stretch backside.

- Wind and water resistant Nylon with mesh inside
- Brushed elastic fleece backside for warmth and enhanced movement
- Elastic rubber waistband with drawstring
- Elastic rubber band inside bottom hem
- Articulated knees
- Reflective detail in front
- 1 zippered sidepocket
- 3/4 zipper with clickdown
- Regular Fit





321560 Vest Training

XS - S - M - L - XL - 2XL - 3XL - 4XL

321561 Vest Training Women

XS - S - M - L - XL - 2XL - 3XL - 4XL

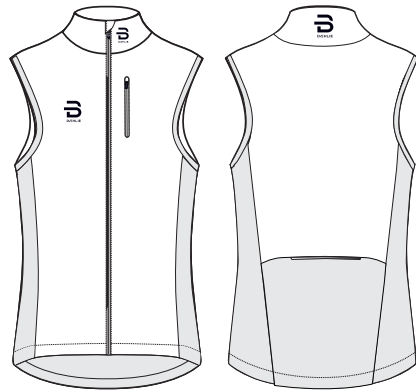
321562 Vest Training Junior

116 - 128 - 140 - 152 - 164

Features:

A comfortable vest in Microfiber provides good protection during outdoor activities.

- Wind and water resistant Nylon with mesh inside
- Elastic back for enhanced mobility
- YKK zippers
- 1 chest pocket
- Reflective details in front and back
- Elastic waist adjuster
- Chin guard with stormflap
- Regular fit



SOFTSHELL

Softshell is highly requested material within crosscountry skiing. Perfect flexibility and lightness makes it most suitable for endurance sports. The construction is 3 layered with an knitted surface, lamination in between and a soft brushed inside for comfort.

The fabric is windproof due lamination and is treated with durable water repellancy on surface.

Products are made for movement and flexibility with good breathability in the back.

A top choice for many.

TEAMWEAR

333304 Jacket Softshell Race 3.0

XS - S - M - L - XL - 2XL - 3XL - 4XL

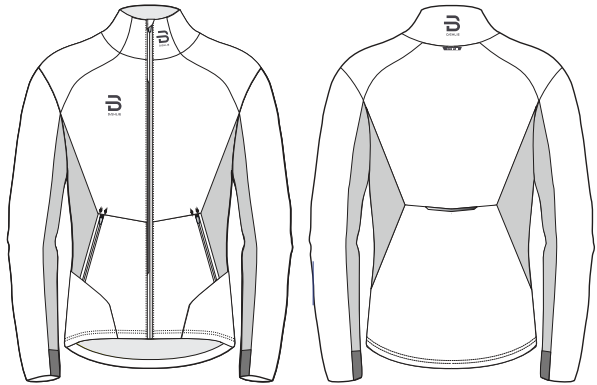
333305 Jacket Softshell Race 3.0 Women

XS - S - M - L - XL - 2XL - 3XL - 4XL

Features:

A warm all-around jacket in softshell front and comfortable stretch inserts for enhanced mobility.

- Wind and water resistant Softshell
- Elastic back for enhanced mobility
- YKK zippers
- 2 hand pockets
- Reflective details in front and back
- Articulated sleeves
- Elastic waist adjuster
- Comfortable elastic cuffs
- Chin guard with stormflap
- Regular fit



333306 Pant Softshell Race 3.0

XS - S - M - L - XL - 2XL - 3XL - 4XL

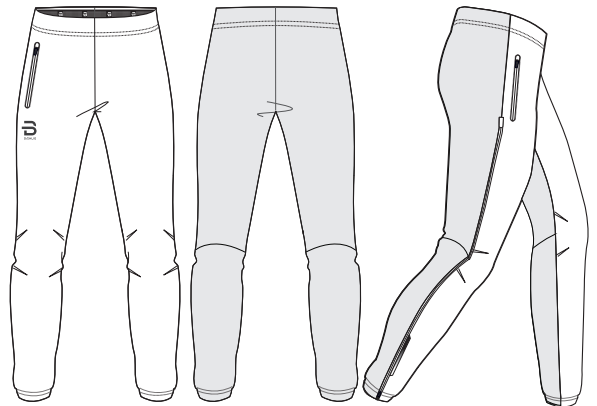
333307 Pant Softshell Race 3.0 Women

XS - S - M - L - XL - 2XL - 3XL - 4XL

Features:

A warm all-around pant in softshell front and comfortable stretch backside.

- Wind and water resistant Softshell
- Brushed elastic fleece backside for warmth and enhanced movement
- Elastic rubber waistband with drawstring
- Elastic rubber band inside bottom hem
- Articulated knees
- Reflective detail in front
- 1 zippered sidepocket
- 3/4 zipper with clickdown
- Regular Fit





333308 Vest Softshell

XS - S - M - L - XL - 2XL - 3XL - 4XL

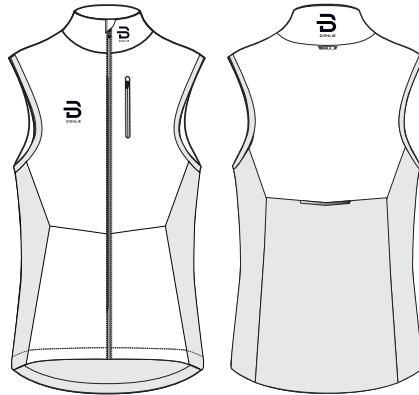
333309 Vest Softshell Wmn

XS - S - M - L - XL - 2XL - 3XL - 4XL

Features:

A warm all-around vest in softshell front and comfortable stretch backside.

- Wind and water resistant Softshell
- Elastic back for enhanced mobility
- Brushed elastic fleece backside for warmth and enhanced movement
- YKK zippers
- 1 chest pocket
- Reflective details in front and back
- Elastic waist adjuster
- Chin guard with stormflap
- Regular fit



RACESUIT ELITE

Next generation Racesuit developed together with and used by the Norwegian national team. High performance light weight fabric with excellent stretch. Strategic placed mesh panelling for optimal ventilation and stretch. Aerodynamic golfball fabric from Schoeller who is top fabric suppliers in europe. Ergonomic shape for excellent movement. A Elite choice for fast skier.

333083 Racesuit Elite 1-Piece

XS - S - M - L - XL - 2XL - 3XL - 4XL

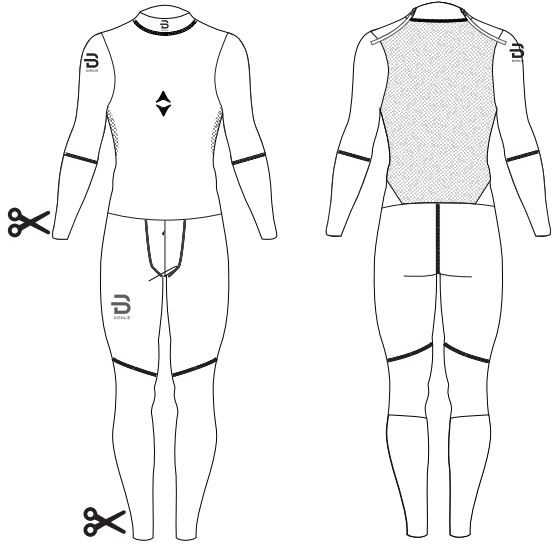
333084 Racesuit Elite 1-Piece Women

XS - S - M - L - XL - 2XL - 3XL - 4XL

Features:

Next generation Racesuit developed together with and used by the Norwegian national team.

- High performance light weight fabric with excellent stretch
- Strategic placed mesh panelling for optimal ventilation and stretch.
- Strategic placed aerodynamic golfball fabric from Schoeller
- Shoulder zipper with chinguard and backplacket
- Ergonomic shape for excellent movement
- YKK zippers
- Front fly zipper (mens)
- Flatlock seams - Sublimated
- Slim fit
- Customize your length on sleeve and leg, cut off possibility



RACESUIT FAST

A highly technical racesuit made in high performance fabric with optimal construction to ensure best performance. A durable compression Racesuit. High performance durable fabric with excellent stretch.

321566 Racesuit Fast 1-Piece

XS - S - M - L - XL - 2XL - 3XL - 4XL

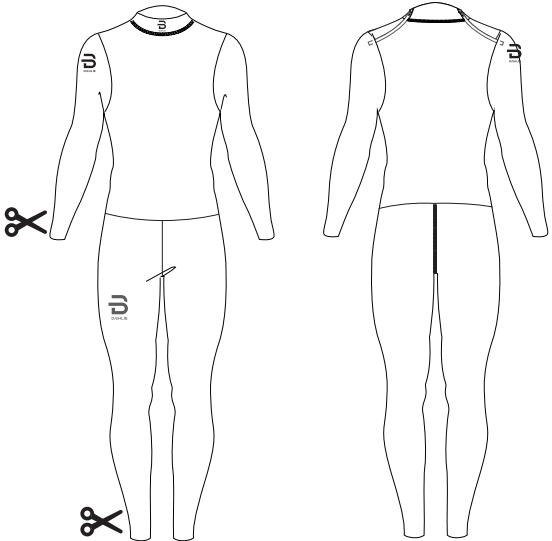
321567 Racesuit Fast 1-Piece Women

XS - S - M - L - XL - 2XL - 3XL - 4XL

Features:

A highly technical racesuit made in high performance fabric with optimal construction to ensure best performance.

- Durable compression Racesuit
- High performance durable fabric with excellent stretch
- Shoulder zipper with chinguard and backplacket
- Ergonomic shape for excellent movement
- YKK zippers
- Front fly zipper (mens)
- Flatlock seams
- Sublimated
- Slim fit
- Customize your length on sleeve and leg, cut off possibility





JERSEY AND TIGHTS FAST

A highly technical jersey and tights made in high performance fabric with optimal construction to ensure best performance. A durable compression jersey and tights. High performance durable fabric with excellent stretch.

333094 Race Jersey Fast

XS - S - M - L - XL - 2XL - 3XL - 4XL

333095 Race Jersey Fast Wmn

XS - S - M - L - XL - 2XL - 3XL - 4XL

333096 Race Jersey Fast Jr

116 - 128 - 140 - 152 - 164

Features:

A highly technical 2 – piece racesuit made in high performance fabric with optimal construction to ensure best performance.

- Durable compression 2 – piece Racesuit
- High performance durable fabric with excellent stretch
- Front zipper with chinguard and backplacket
- Ergonomic shape for excellent movement
- Elastic waistband with drawstring
- YKK zippers
- Flatlock seams
- Sublimated
- Slim fit
- Customize your length on sleeve, cut off possibility



TEAMWEAR

333097 Race Tights Fast

XS - S - M - L - XL - 2XL - 3XL - 4XL

333098 Race Tights Fast Wmn

XS - S - M - L - XL - 2XL - 3XL - 4XL

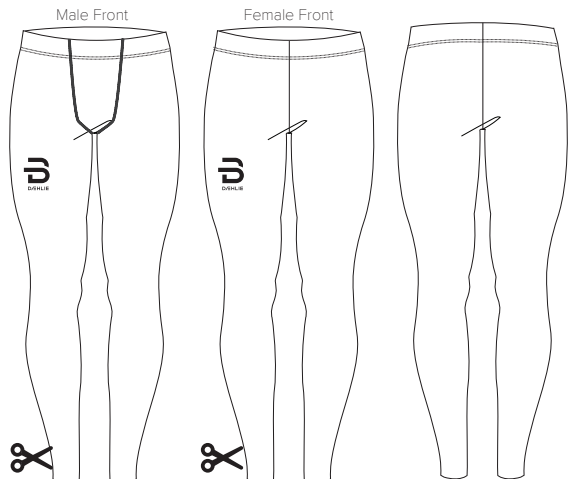
333099 Race Tights Fast Jr

116 - 128 - 140 - 152 - 164

Features:

A highly technical 2 – piece racesuit made in high performance fabric with optimal construction to ensure best performance.

- Durable compression 2 – piece Racesuit
- High performance durable fabric with excellent stretch
- Front zipper with chinguard and backplacket
- Ergonomic shape for excellent movement
- Elastic waistband with drawstring
- YKK zippers
- Flatlock seams
- Sublimated
- Slim fit
- Customize your length on leg, cut off possibility



RACESUIT & JERSEY BIATHLON

A highly technical racesuit made in high performance fabric with optimal construction to ensure best performance. A durable compression Racesuit. High performance durable fabric with excellent stretch
 Shoulder zipper with chinguard and backplacket. Made with ergonomic shape for excellent movement.
 Added silicon gripper for more accurat shooting presicion.
 A good choice for your biathlon team.

TEAMWEAR

333100 Race Jersey Biathlon

XS - S - M - L - XL - 2XL - 3XL - 4XL

333101 Race Jersey Biathlon Wmn

XS - S - M - L - XL - 2XL - 3XL - 4XL

Features:

A highly technical 2 – piece racesuit made in high performance fabric with optimal construction to ensure best performance.

- Durable compression 2 – piece Racesuit
- High performance durable fabric with excellent stretch
- Front zipper with chinguard and backplacket
- Ergonomic shape for excellent movement
- Elastic waistband with drawstring
- YKK zippers
- Flatlock seams
- Sublimated
- Slim fit
- Customize your length on sleeve, cut off possibility



333085 Racesuit Biathlon 1-Piece

XS - S - M - L - XL - 2XL - 3XL - 4XL

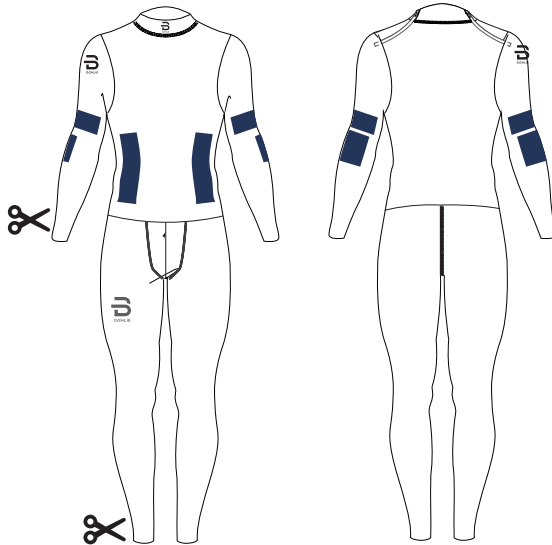
333086 Racesuit Biathlon 1-Piece Women

XS - S - M - L - XL - 2XL - 3XL - 4XL

Features:

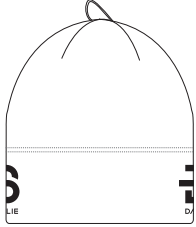
A highly technical racesuit made in high performance fabric for biathlon with optimal construction to ensure best performance.


- Durable compression Racesuit for biathlon
- High performance durable fabric with excellent stretch
- Shoulder zipper with chinguard and backplacket
- Ergonomic shape for excellent movement
- YKK zippers
- Front fly zipper (mens)
- Flatlock seams
- Sublimated
- Slim fit
- Customize your length on sleeve and leg, cut off possibility



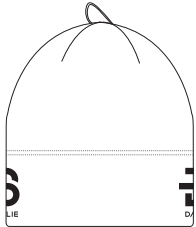
ACCESSORIES

There is always a need for accessories and it is an easy way of good visibility to your team.
2 good and durable products for warmth and comfort during cross country skiing.

<p>321571 Hat Allround Adult - Junior</p> <p>Features:</p> <p>Warm and comfortable all- around hat.</p> <ul style="list-style-type: none"> - Brushed fleece lining inside - 4-way stretch - Flatlock seams 	
---	---

<p>333102 Headband Allround Adult - Junior</p> <p>Features:</p> <p>Warm and comfortable all- around headband.</p> <ul style="list-style-type: none"> - Brushed fleece lining inside - 4-way stretch - Flatlock seams 	
---	---



<p>333127 Hat Race</p> <p>Features:</p> <p>Light and flexible race hat for all year use.</p> <ul style="list-style-type: none"> - Light elastic fabric, slightly brushed inside - 4-way stretch - Raw edges and Flatlock seam 	
--	---

<p>333128 Headband Race</p> <p>Features:</p> <p>Light and flexible race headband for all year use.</p> <ul style="list-style-type: none"> - Light elastic fabric, slightly brushed inside - 4-way stretch - Raw edges and Flatlock seam 	
--	---

VISIT US AT
WWW.DAHLIE.COM

In pursuit of perfection

