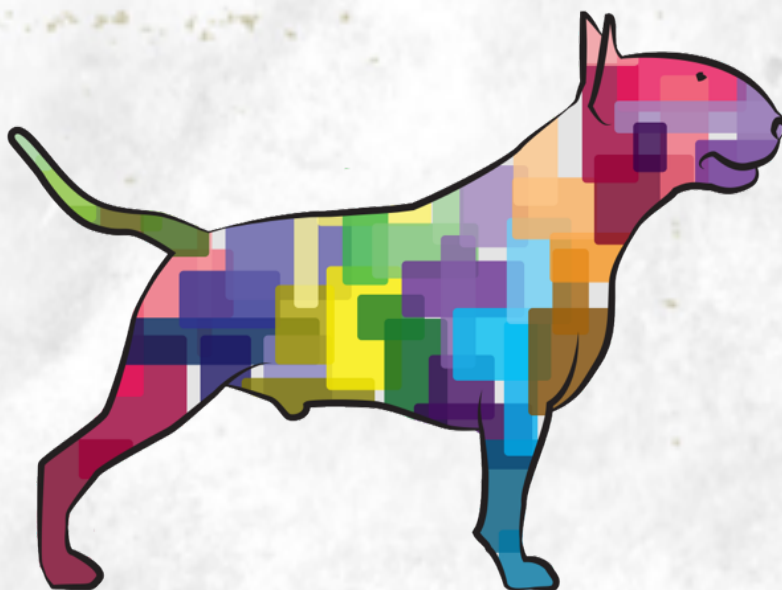


BULLETIN

MINIATURE BULL TERRIER

SPECIALIZED MAGAZINE IN BULL TERRIER MINIATURA



BULL TERRIER MINIATURA



BULLETIN N°1
29 MAYO 2020



CONTENT

STANDARD OF THE BREED

WE REMEMBER TO PEPE VON DER ALTEN VESTE

HEALTH (PLL)

THE HEAD OF THE MBT

WE INTERVIEW WITH MARCK AND JOANNA PHILIPS

WE KNOW UNCLE SAM AT BULLYVIEW THE WARRIOR

WE KNOW THE KENNEL VON AMADIS

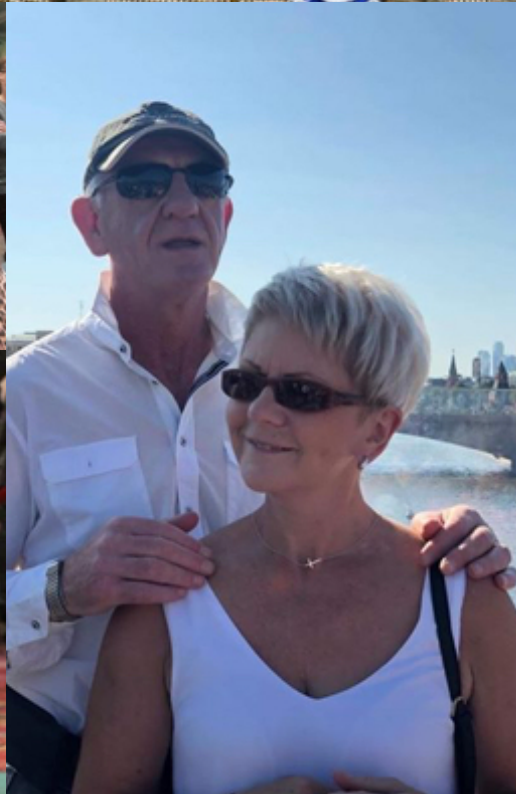
THE BTC WELFARE

ANNOUNCEMENTS

FOREWORD

Thanks to the team that makes up this newsletter, for dedicating part of their time and their lives to dedicating it to the passion we have for this beautiful breed, and thanks to all of us, we can improve this newsletter.

All information has been gathered with Owners/ Breeders permission.



STANDARD OF THE BREED

GENERAL APPEARANCE: Strongly built, muscular, well balanced and active with a keen, determined and intelligent expression. A unique feature is a downfaced, egg-shaped head. Irrespective of size dogs should look masculine and bitches feminine.

BEHAVIOUR/TEMPERAMENT: Courageous, full of spirit, with a fun loving attitude. Of even temperament and amenable to discipline. Although obstinate is particularly good with people.

HEAD Long, strong and deep right to end of muzzle, but not coarse. Viewed from front egg-shaped and completely filled, its surface free from hollows or indentations. Profile curves gently downwards from top of skull to tip of nose.

CRANIAL REGION: Skull: Top of skull almost flat from ear to ear.

FACIAL REGION:

Nose: Should be black. Bent downwards at tip. Nostrils well developed.

Lips: Clean and tight.

Jaws/Teeth: Under-jaw deep and strong. Teeth sound, clean, strong, of good size, regular with a perfect, regular and complete scissor bite, i. e. upper teeth closely overlapping lower teeth and set square to the jaws.

Eyes: Appearing narrow and triangular, obliquely placed, black or as dark brown as possible so as to appear almost black and with a piercing glint. Distance from tip of nose to eyes perceptibly greater than that from eyes to top of skull. Blue or partly blue undesirable.

Ears: Small, thin and placed close together. Dog should be able to hold them stiffly erect, when they point straight upwards.

NECK: Very muscular, long, arched, tapering from shoulders to head and free from loose skin

BODY: Well rounded with marked spring of rib and great depth from withers to brisket, so that latter nearer ground than belly.

Back: Short, strong, with backline behind withers level, arching or roaching slightly over loins.

Loin: Broad, well muscled.

Chest: Broad when viewed from front.

Underline and belly: From brisket to belly forms a graceful upward curve.

TAIL: Short, set on low and carried horizontally. Thick at root, it tapers to a fine point.

STANDARD OF THE BREED

LIMBS

FOREQUARTERS:

General appearance: Dog should stand solidly upon legs and they should be perfectly parallel. In mature dogs length of forelegs should be approximately equal to depth of chest.

Shoulder: Strong and muscular without loading. Shoulder blades wide, flat and held closely to chest wall and have a very pronounced backward slope of front edge from bottom to top, forming almost a right angle with upper arm.

Elbow: Held straight and strong.

Forearm: Forelegs have strongest type of round, quality bone.

Metacarpus (Pastern): Upright.

Forefeet: Round and compact with well arched toes.

HINDQUARTERS:

General appearance: Hind legs parallel when viewed from behind.

Thigh: Muscular.

Stifle (Knee): Joint well bent.

Lower thigh: Well developed.

Hock joint: Well angulated.

Metatarsus (Rear pastern): Bone to foot short and strong.

Hind feet: Round and compact with well arched toes.

GAIT / MOVEMENT: When moving appears well knit, smoothly covering ground with free, easy strides and with a typical jaunty air. When trotting, movement parallel, front and back, only converging towards centre line at faster speeds, forelegs reaching out well and hind legs moving smoothly at hip, flexing well at stifle and hock, with great thrust.

SKIN: Fitting dog tightly.

COAT: Hair: Short, flat, even and harsh to touch with a fine gloss. A soft textured undercoat may be present in winter.

Colour: For White, pure white coat. Skin pigmentation and markings on head not to be penalised. For Coloured, colour predominates; all other things being equal, brindle preferred. Black brindle, red, fawn and tricolour acceptable. Tick markings in white coat undesirable. Blue and liver highly undesirable.

STANDARD OF THE BREED

SIZE AND WEIGHT: Height should not exceed 35,5 cms. There should be an impression of substance to size of dog consistent with quality and sex. There is no weight limit. Dog should at all times be balanced.

FAULTS: Any departure from the foregoing points should be considered a fault and the seriousness with which the fault should be regarded should be in exact proportion to its degree and its effect upon the health and welfare of the dog.

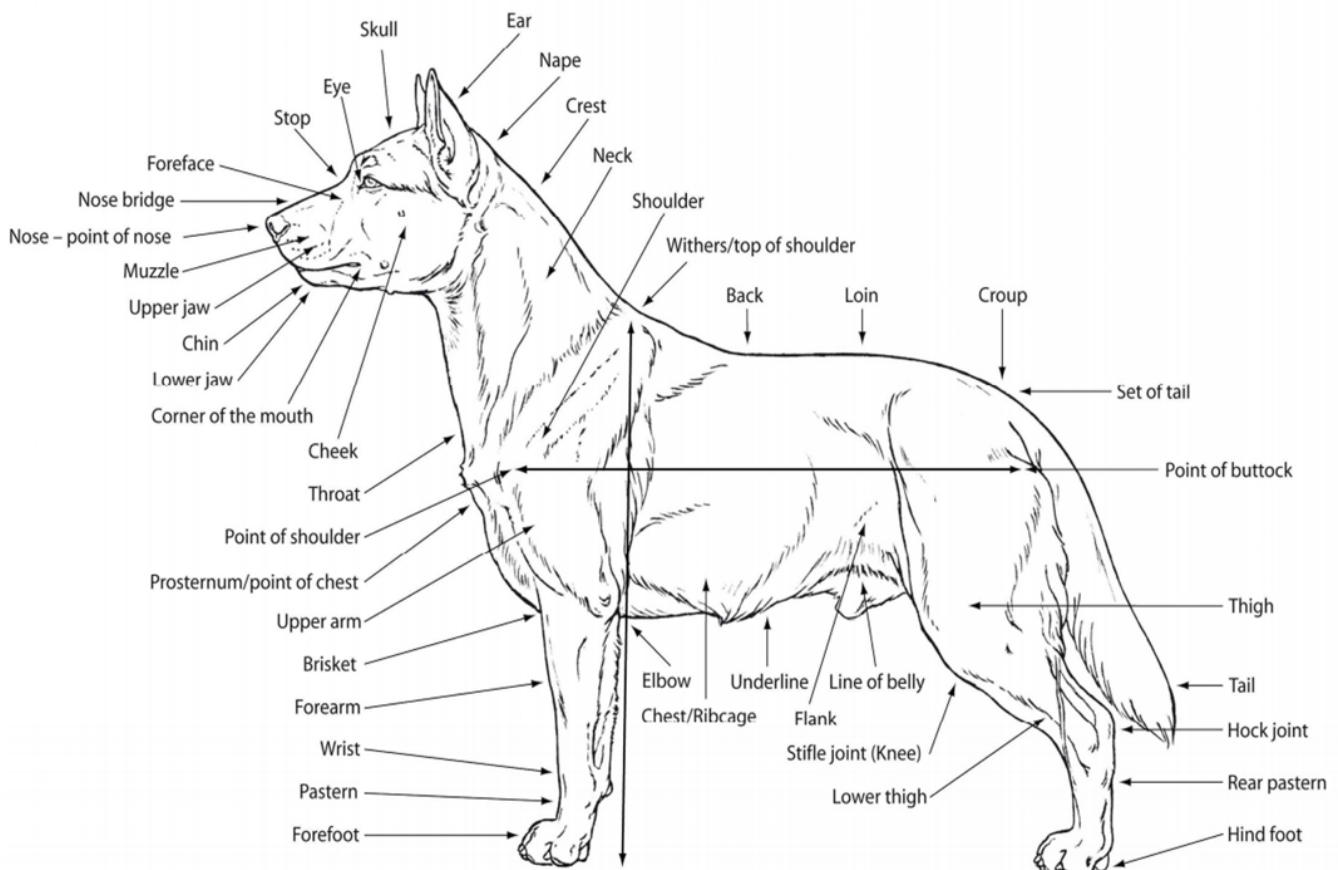
DISQUALIFYING FAULTS

- Aggressive or overly shy dogs.
- Any dog clearly showing physical or behavioural abnormalities shall be disqualified

N.B.:

- Male animals should have two apparently normal testicles fully descended into the scrotum (this expression is obligatory in every standard).
- Only functionally and clinically healthy dogs, with breed typical conformation should be used for breeding.

ANATOMICAL FEATURES



WE REMEMBER TO ...



**Pepe Von Der Alten
Veste**
D.O.B 15/02/2010
Breeder/Owner
Mr G Scherzer

PEPE VON DER ALTEN VESTE	WILD WEST DESPERADO FOR KUDA WIEDZMA	REGENCY'S DD PROF. DUMBLEDORE	TECUYA'S SOMETHING TO TALK ABOUT
		WILD WEST QUEEN OF HEARTS	REGENCY'S STORMY WEATHER
	WYONA VON DER ALTEN VESTE	SPEKREAD POO FIGHTER	TECUYA'S SOMETHING TO TALK ABOUT
		ANGEL VOM KAISERSTUHL	RAMBUNCTIOUS WHISPERING WIND
			SEKMAR BILLY IDOL (BT)
			SCHARDALE MY PRECIOUS
			SCHARDALE MY HANDSOM JOE
			FLORA FEE VOM FURSTENGRABEN



For many a big influence in their breeding programme both in the UK and around the world, Pepe was not greatly shown, although he is a German Champion, in the words of his Breeder his influence in the breed has brought more than his titles.

Pepe has offspring in countries uncluding Spain, Ukraine, Russia, Slovakia, Netherlands, Belgium, UK and of course Germany, his name will be behind many of the pedigrees today.

He has sired Champions of the breed and has puppies with Kennels such as: Badlesmere, Bullack, Canabull, Slanting Shore, Groovy Little Velvets, Hotheads and Milkyway Miniature to name a few.

George is very proud of Pepe for the virtues he has brought to the Miniature Bull Terrier, not just in conformation and breed type but in temperament as well.



HEALTH (PLL)

Primary Lens Luxation, PLL, is a hereditary ocular abnormality reported in more than 20 dog breeds and within them, the Miniature Bull Terrier. It is characterized by the dislocation of the eye lens by the breakage of the ligaments called Zonulas, which are the ones that keep the lens in its natural location, when this occurs it produces a lot of pain and discomfort.

This abnormality has been identified to occur due to the mutation of the ADAMTS17 gene and is the same gene identified in cases of Glaucoma, in fact PLL can also cause secondary glaucoma and vision loss.

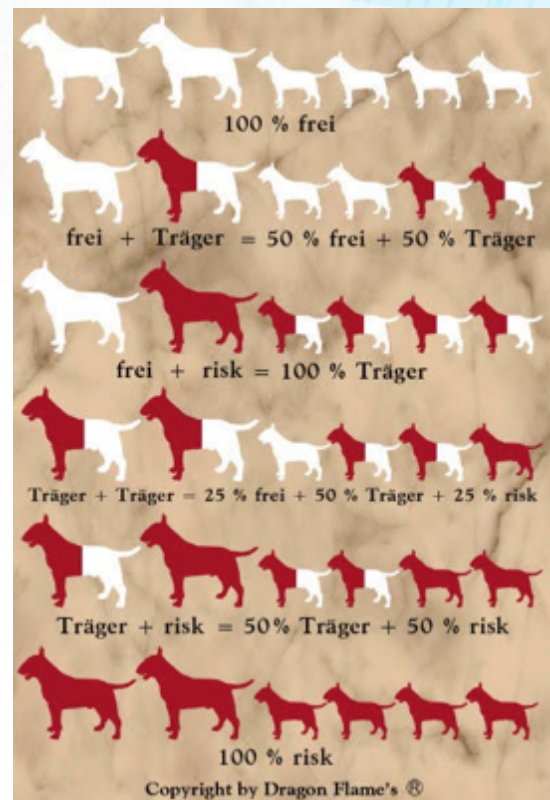
Primary lens dislocation is inherited in an incomplete autosomal dominant manner in Miniature Bull terriers, meaning that only one copy of the mutated gene needs to be inherited to be at increased risk of developing the disease.

The age of presentation is variable and has been reported from 2 years to 8 years, this also depends on whether the affected animal has one or both copies of the mutation in the ADAMTS17 gene, clinical signs include, eye irritation, excessive blinking, tearing and pain.

Due to the mode of inheritance it is possible to identify a genetic marker linked to lens dislocation, then DNA is identified with a battery of microsatellite biomarkers or biomarkers representing candidate genes for the mutation.

Once identified, we must sterilize the affected specimens and be very careful when using specimens that carry the gene mutation, When a specimen carrying this mutation mates with another specimen that is also carrying the same mutation, we run the risk of having affected puppies and puppies, for each pup born in this cross, there is a 25% chance that the puppy inherits two copies of the mutation and a 50% chance that the puppy will inherit one copy of the mutation, and in all cases they may be susceptible to PLL lens dislocation.

Miniature Bull Terriers that do not have the mutation are not at increased risk of having affected puppies when they mate with a specimen that is also free of this mutation.



CHRISTIAN MORI ALVARADO
DVM
ANIMAL MEDICAL CENTER PERU
drmorivet@gmail.com

THE HEAD OF THE MBT

THE UNIQUE HEAD OF OUR BREED

Can anything define the Bull Terrier/Bull Terrier (Miniature) better than the breed's unique head? I think not, it provides us with the very essence of breed 'type'



The Breed standard then goes on to describe, again in detail, each point of the head; the ones I use as a reference point when searching for a 'great' head are:

Breeders and judges are lucky that our Breed Standard is VERY specific when it comes to describing the head and the opening statement tells us it must be: 'Long, strong and deep right to the end of the muzzle, but not coarse. Viewed from the front, egg-shaped and completely filled, its surface free from hollows or indentations. Profile curves gently downwards from top of skull to tip of nose'. This opening statement gives you a great launching pad for understanding the head; grab a copy of the breed standard, get your hands on a dog with a correct head, and it will all make perfect sense: sweep your hands along the profile, stroke the ears back and assess the depth and strength of the head, looking out for that 'roman finish', lastly place your thumbs under the eyes and feel for the strength of muzzle fill provides. Bliss! (This hands on test is doubly essential for coloured dogs whose markings may deceive the eye but not the hand.)

Eyes: Narrow and triangular – obliquely placed – black or as dark as possible – a piercing glint – distance from eyes to nose to be greater than that from eyes to top of skull. What does this tell us? Two important things to beware; the round eye which is creeping into our breed – it's not just untypical but, for me, very undesirable. A miniature bull terrier's piercing expression should stop you in your tracks and we must all fight to preserve it!



THE HEAD OF THE MBT

Nose: Black – bent downwards at the tip. Why is this important? Well, it refers to the revered, but often missing, ‘Roman Finish’ whose presence alone can turn a ‘good’ head into a ‘great head’.

Lips: Clean and tight - yes, of course - but also don't forget you want to see the pigment coming through her too

The other point? Length of foreface: we are not looking for an exaggerated profile, like a sheep or a parrot's beak, we need an ‘egg shape’ with a gently curving profile and strength in the foreface. Sometimes, less is more!

Ears: Small, thin, placed close together – they should point straight upwards.

Do ears really matter? I think so, small, erect, well placed ears are the icing on the cake when it comes to the dog's expression. Look at them face on, ears on top, eyes glinting and feel those shivers run down your spine!

Teeth; the teeth are, I think, a topic of their own so I'll just say I'd certainly prefer a perfect bite but **WARNING!!** don't be a fault judge: any novice can spot an incorrect bite, the skill is in weighing it against the dog's other virtues. Distinct virtues should carry the day - beware the faultless nonentity!

There are many great heads in our breed but there are also some which are not so great, round eyes, lack of depth, lack of fill. Some breeders/exhibitors/judges seem to think a mini doesn't need to have such a great head as the Bull Terrier but this is wrong thinking and is an acceptance that a mini can be a second class citizen. They can't! If you're unsure, speak to someone experienced, ask to see a dog with a great head then, touch it, feel it, love it – never forget it!

I'll close with a pause for thought; our breed standard was written 100 years ago and, apart from a few tweaks and refinements over the years, remains pretty much intact. So, take a minute to reflect on the images of the dogs from that time and be in awe, not only of the vision of the early breeders of that time, but of the dedication of the breeders who came behind them and worked so hard to produce the beautiful heads we see today.



WE INTERVIEWED ...

MARK AND JOANNA PHILLIPS

Why the miniature bull terrier? What motivated you to enter the world of breeding this breed?

We originally in the early 80s showed and bred Bull Terriers. During this time the breed of Bull Terriers had a lot of health and mainly temperament problems. We had a small bull terrier show bitch by Ch Maximillian Bullyboy of Jobrulu called Amelia Maximum Bullion (Kizzy).



At this time in Bull Terriers there was a definite preference in the show ring for size in the UK and Kizzy won a lot including 3 BOS at Breed Club Open Shows before she was 12 months old. But she was small and although she had a super head which was more rare in those times, the judges had a preference for the larger bitches. Nowadays with judging Bull Terriers the lack of size isn't such a handicap. Anyway we were approached by Jacqui Thornley from Warbonnet Kennels at a show & she said that if we mated Kizzy to a miniature bull terrier then she would buy the whole litter.

Diane Berry was also interested at the time in Kizzy being mated to a mini. We at the time had only been in Bull Terriers for a couple of years and wanted to breed a Bull Terrier litter from Kizzy and Miniatures were not in our minds at all. We always look back at that decision not to mate Kizzy to a mini because knowing what we know now, we think the litter would have been fabulous. Anyway we stumbled along in Bull Terriers for another 8 years by which time we were suffering with lots of temperament problems, as was the BT breed as a whole in the 80's and early 90's. We had kept in touch with Diane Berry, Zedbees Miniature Bull Terriers, the top kennel going back many years of line bred MBTs as she lived very close to our home at that time. Diane had 2 solid brindle Miniature Bull Terrier bitches in the mid 90's she had been running on for show that were about a year old, Jessica and Zilla. The MBT was similar to the Bull Terrier but more manageable and we wanted to continue with our dog showing and breeding hobby. Mark was desperate to get a super MBT foundation bitch and Diane eventually agreed to sell us Jessica, our first MBT. She was soon followed by Zilla her sister who was an outstanding MBT bitch but Diane couldn't get her to show so she sold her to us. Zilla became our first CC winner in MBTs and went on to become a champion Ch Zebees Zamilla of Bullyon.

WE INTERVIEWED ...

MARK AND JOANNA PHILLIPS

What characteristics define BULLYON?

Type soundness health and temperamen

Could you describe the type of miniature bull terrier you like, both physically and psychically?

Balance is very important in a Miniature Bull Terrier. The Mini should have the correct proportions throughout . If it is smaller in height, then it should have a smaller head, smaller bone and be proportionate to its size. It must look like a Mini characterized by the mini egg shaped head with smooth profile and expression . The character and personality of the Mini is important. They can be stubborn but generally sweet natured and love human attention. Great if they have an outgoing personality for the show ring.

Although it grows seeking balance in the dog, one aspect always pursues more than another. Are there any physical aspects that especially interest you?

Size with balance. There are dogs that are small but it is very difficult to get this attribute along with balance. Movement is also important. If a dog moves well it means that it is made well.

What differences are there in your offspring since you started until today, when has it changed?

When we started in the 90s our minis were on the measure. As we continued to breed, generally the best pup in the litter was the biggest, so we kept that one , showed them and then bred from them. This I think caused our size to increase. Due to the interbreeding the size of all the minis in the UK started to increase too. So we had bigger minis with great confirmation. This would have been in the early 2000s. We ourselves called the minis in the UK at this time midis. Midis had been around in the past. In the early 90s Quita Youatt had a mini boy Ch Lizette First Edition of Kearby, when he won Best of Breed, if the Bull Terrier was a bitch in the Terrier Group he was sometimes bigger or the same size as it. The difference in the 90s was that the Midis were in the minority. In the 2000s up to roughly 2015s in the UK Midis had become the normal and minis were in the minority to such a degree that the Mini in the show ring almost looked too small. I think all the breeders in the UK worked hard to try to bring the size down. We used stud dogs with German breeding behind, which seemed to help reduce our size.

WE INTERVIEWED ...

MARK AND JOANNA PHILLIPS

Which specimen of your offspring are they most proud of and why?

Ch Bullyon Meet Your Measure (Dyson) . He was line bred on both sides back to Ch Zedbees Zamilla of Bullyon our original mini bitch. He had great conformation, a good head, great movement, super show boy, great temperament. He was a great producer and always put good confirmation and good temperament on his pups. He had great health and lived until he was 13yrs old. He is behind all our minis today.



Ch. Bullyon Meet Your Measure.

Which dogs are your international favorites and why?

Ch Canabull North Wind (Spain). Ch Kingsmere Rhinestone Hot Tashi (USA). Ch Panda of Bully Lake (Hungary). Sir Chuck vom Kaiserstuhl (Germany). CH Tiffany Bonsai Von Amadis (Germany). CH Moonkraft's Princess Of Showland (Lithuania), Ch Aluego del cornijal (Spain), Ch Machaquito de L'cossta (Spain)

These are some of the outstanding Miniatures from the continent. These in particular are super for type, size & balance.

What type of copies do you like as stud?

We think these dogs are great producing stud dogs. There have been a number over the years and we have just given some that come to mind. We haven't had the opportunity to use them all. Ch Canabull North Wind, Ch Merlindan Captain Chaos, Ch Panda of Bully Lake, Pepe Von Der Alten Veste, Ch Bullyon Meet Your Measure, Ch Made To Measure of Bullyon, Ch Bullyon Back To The Measure, Ch. Bullypins Kaimos.



The picture is of Ch Made To Measure of Bullyon. He won 9 CCs and BOB at Crufts 1999.

WE INTERVIEWED ...

MARK AND JOANNA PHILLIPS

With which dog from the past would they make a litter if possible?

Top UK MBT 2000,
7 CCs with 7 BOBs.



Ch. Bullyon Full Measure

The MBT is an increasingly popular breed, do you consider its popularity beneficial or harmful to the breed?

We believe the popularity of the Miniature Bull Terrier to be beneficial to the breed because it is still a vulnerable breed with comparatively low registrations to other breeds. This will help to give breeders more choice when breeding.

Do you think that nowadays the importance that health deserves in MBT is being given, do you think that we have improved or worsened?

We think nowadays health is more important than it was when we first started.

Some of this is because there are more tests available now, but I remember nearly all UK breeders from when we first came into minis were involved in supporting finding the test for PLL. There was also a culture in the 90's with vets and health testing. We wanted a Bull Terrier BAER tested for the interbreeding programme in the 90's and we were asked if we thought there was something wrong with her hearing and they were very surprised that the reason we wanted her BAER tested was purely for her suitability to be bred from. This seems so strange now, when nearly all puppies are BAER tested before they go to their new homes. The most amazing test for us and everyone I think was the arrival of the PLL test and no more dogs/bitches with PLL. Prior to the PLL test, it was like playing Russian Roulette when breeding, unless you interbred, but that only helped for 1 generation. You could keep putting the offspring back to a Bull Terrier, but then the size would be almost up to Bull Terrier size. We think that some breeders have become testing obsessed when looking for a stud dog. They need to take a more rounded view of their quest. They need to take into account what they think needs improving on their bitch and look at how the bloodlines tie in. They need to look at temperament too which is sometimes difficult if the stud dog is from a different country, but maybe looking at temperament of the stud dog's parents, siblings & dogs/bitches from that stud dog where possible. Try to look into the longevity of the stud dog's parents, grandparents, great grandparents and siblings. And of course take into account the health tests to give you a more rounded stud choice.

WE INTERVIEWED ...

MARK AND JOANNA PHILLIPS

What faults do you consider most important today in the breed?

Lack of balance and lack of type.

Is there always a special dog for all of us. In your case, who is this dog and why did he win that position?

The special Mini for me was Dyson, Ch Bullyon Meet Your Measure. Such a sweet boy, he used to enjoy me taking him on holiday to North Devon where we had a holiday home. I attach a picture of him with me at Tintagel Castle. For Mark he thinks all of our dogs have been special over the years in different ways.



Dyson at Tintagel Castle

The MBT is a special dog, do you have any special or funny anecdote that you can tell us?

Ch Made To Measure of Bullyon (Chunks) was asked to be part of the Pedigree Chum Crufts Television advert in 2000 because he had won Best of Breed at Crufts the previous year. We had a great day at the TV studios filming with other breeds. Unfortunately we have no copy of the TV advert now. We did have a VHS video copy at one time given to us by the TV company.

If you could, would you change something of what you have done in these years?

Now in hindsight, we would have liked to mate our Bull Terrier Kizzy Amelia Maximum Bullion to a mini back in 1986 (we mentioned her in question 1). We also wish we had had the opportunity to have frozen semen from Ch Bullyon Full Measure and Ch Made To Measure of Bullyon.

WE INTERVIEWED ...

MARK AND JOANNA PHILLIPS

From all your experience in the world of dogs, is there anything that you think is important to share with all of us?

We would like to share with all of you the best way we think to see balance in a Miniature Bull Terrier by using a picture of a Shetland Pony and a picture of a Miniature Horse . The Shetland Pony which is very powerful with super bone and a big head is very unbalanced with legs that are too short. The Miniature Horse is perfectly balanced and square. If you take the people and background out of the picture with the Miniature Horse it would be very difficult to judge what size it was and that is because it is completely in proportion.

What attributes do you consider most important in a breeder?

Patience and determination because we are all striving to breed the perfect Miniature Bull Terrier.

What advice would you give to someone who wants to enter the world of breeding?

We have found in 25 years of breeding minis that there is no easy fix to breed the perfect mini. When we look back our foundation bitch Ch Zedbees Zamilla of Bullyon was as good as any bitch around today and would still gain her champion title. Therefore where have we gone in 25 years. One step forward then 2 steps back, then 2 steps forward and 1 step back, so we try to get back to where we started which can be disheartening. We think the incidents of general health problems in minis hasn't changed much within these years even with the easier and wider availability of testing. Obviously we can only speak for the minis that we had & have knowledge of throughout this time and we do think now there is more transparency with health problems which is good.



Shetland Pony



Miniature Horse

WE INTERVIEWED ...

MARK AND JOANNA PHILLIPS

Far and away the biggest health problem in minis was and had been for years PLL. It was believed at the time to affect nearly 1 in 4 dogs. For all of the mini breeders before the PLL test had been developed it was almost heartbreaking to breed because you were literally breeding blind because onset of PLL symptoms were generally after 4 years, well after a bitch or dog would have already been used to breed. I cannot express enough how much the arrival of the PLL test changed the mini breeders world at that time. To have a conclusive test means no more dogs/bitches with PLL ever again.



Ch Zedbees Zamilla of Bullyon

Thank you to Mark and Joanna Phillips for this interview



WE KNOW ...

CH Uncle Sam at Bullyview The Warrior

A true ambassador for the breed. Wonderful type and with 14 inches (35,5 cm) a perfect size.

He was born in Germany bred by Werner Dittrich of the Warrior Kennels. And is owned and handled by Mandy and John Young of the Bullyview Kennels in the UK.

Heart, Kidney , Baer tested.
PLL Clear, LAD Clear



He has won to date:

6 CC's 3 RCC's
Plus CC Crufts 2019
CC and BOB Crufts 2020
BIS Miniature Bull Terrier Club Open show.
BIS Miniature Bull Terrier Club
International Show 2019.
BOB Bull Terrier Club Open Show 2019.
BOB Bull Terrier Club Open Show 2020.
Top winning mini 2019



WE KNOW ...

CH Uncle Sam at Bullyview The Warrior

His Sire is UK,-VDH,-GBF, C.I.B., Amsterdam Winner, German Winner, Annual Trophy Winner, Clubwinner GBF/VDH, Clubwinner Tschechien, Clubwinner Netherland, Bundessieger Best Veteran Crufts 2020

CH Merlindan Captain Chaos

Bred by Linda and Dany McGregor in coownership with Dagmar Brommont-Lothary.



His Dam Xpery Zóna bulls who was hardly shown but proved her qualities in the welping box.



SHUK-D-CH, BW-VDH, CW-GBF/CZNL Merlindan Captain Chaos AP 01812402 Black Brindle & White PLL-clear by DNA G557SM	Stone Cold's Elvis by Bullypins AL0602579 Black Brindle	UK-CH Bullypins Kaimos AH0209121 white with Eye Patch PLL-clear BW-L-D-CH Breave Heart's Eve GCB709119 Black Brindle & white PLL-clear	CH-Decadence Dandy Lion AH0209123 white Bullypins Mayliss AH0209123 Brindle BW-L-CH Black Mirror from Prior's Point AH0209123 Black Brindle & white Breave Heart's Curly AH0209123 Brindle
	Bullypins Millina of Merlindan AH0209103 Brindle, PLL-clear DNA	CH Decadence Dandy Lion AH0209123 white Bullypins Mayliss AH0209123 Brindle	BW-L-CH Black Mirror from Prior's Point AH0209123 Black Brindle & white Breave Heart's Curly AH0209123 Brindle
Xpery Zóna bulls G512BM Brown & white PLL-clear by birth	I Am Baster z Makdani KC58 A70901471 red PLL-clear by birth	Sweet Bazzyl Chucho Topline PKR 0172621 Brindle PLL-clear DNA, Audio-a-B., cardio free	CH-CH Decadence Dandy Lion AH0209123 white Bullypins Mayliss AH0209123 Brindle
	Noblessa Zóna bulls SPKP16514 Brindle & white PLL-clear by birth	Delora Zóna bulls SPKP16514 Brindle & white PLL-clear DNA	CH-CH Decadence Dandy Lion AH0209123 white Bullypins Mayliss AH0209123 Brindle

WE KNOW THE KENNEL

VON AMADIS

HISTORY OF THE KENNEL "VON AMADIS"

My name is Dagmar Brommont-Lothary and I have been in Bull Terriers since I was a young girl and I visited Bull Terrier Shows in the German Democratic Republic with my mother. When I was old enough I bought my first Bull Terrier, her name was "Cora vom Rabenstein", she was born in 1990. She was my entry into the world of Bull Terriers. My Kennel got more and more popular until it was forbidden to breed Bull Terriers in my area of Thuringia in Germany.



In 2001 I bought my first Miniature Bull Terrier "Cora Bonsai vom Kaiserstuhl" She was my foundation bitch and was very successful in the show ring and was a very good producer, but sadly she was PLL affected.



Cora Bonsai Vom Kaiserstuhl

Her daughter "Clara Bonsai von Amadis" was one of the two foundation bitches in my kennel, the other one was "Queen vom Kaiserstuhl" who I rescued from a Welfare Kennel. So Amadis had two different bloodlines to breed from.



Clara Bonsai Von Amadis

Queen is the mother of "Lena Bonsai von Amadis" and from that progeny I got my second line from which produced Multi and UK Champions, Zozo, Gwenevere, Opium and also Ch. Kinga Bonsai von Amadis who became a Champion within 7 months of being shown.



Queen Vom Kaiserstuhl

WE KNOW THE KENNEL

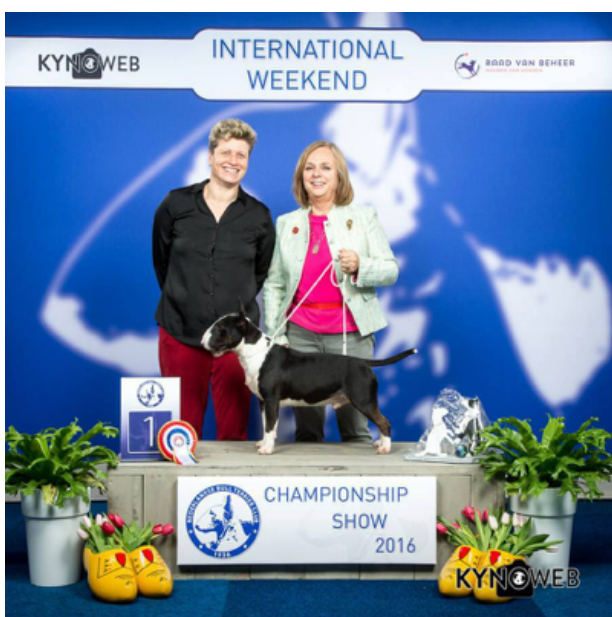
VON AMADIS

Clara is the mother of Multi Ch. Jamaica Bonsai von Amadis” who is the mother of the wellknown Multi & UK Champion “Tiffany Bonsai von Amadis”.



Jamaica Bonsai Von Amadis

Multi & UK Champion Merlindan Captain Chaos aka “Loki” helped enormously with the success of my breeding. He is an outstanding male and I am thankful for the trust that Linda and Danny McGregor gave to me in his co-ownership.



“Loki” is the father of many Champions and has been a milestone in the breed.

Today I have a 7 month old male in my kennel that I bought from a close friend which has bought my two breeding lines together and looks very promising.

Over the years, together with my husband Ortlieb, who is more than 40 years in Bull Terriers, I showed our own dogs successfully many times in Europe and also the UK.

I have been judging Bull Breeds for over 10 years both in the UK and around the world and have made lots of friends along the way.



Dagmar and her husband Ortlieb

ZoZo Bonsai Von Amadis together with her father Loki

WE KNOW THE KENNEL

VON AMADIS



Clara Bonsai Von Amadis



My first Miniature, Cora Bonsai vom Kaiserstuhl



Multi Ch. Jamaica Bonsai von Amadis

WE KNOW THE KENNEL

VON AMADIS



Uk. Ch. ZoZo Bonsai Von Amadis



Uk. Ch. Opium Bonsai Von Amadis



Uk Ch. Gwenevere Bonsai Von Amadis



Uk. Ch. Tiffany Bonsai Von Amadis



HELLO

MY NAME IS.....**DIESEL**

INTRODUCING DIESEL

THIS VERY HANDSOME 6 YEAR OLD RED AND WHITE MALE BULL TERRIER WHO IS FULLY VACCINATED, CASTRATED AND CHIPPED .

SPOTLESS CLEAN AROUND THE HOUSE, DIESEL FOUND HIMSELF IN WELFARE BECAUSE HIS OWNER IS WORKING FOR HER MAJESTY SERVICES. THE FAMILY DECIDED AFTER DIESEL WAS BEING PASSED AROUND FROM DIFFERENT FAMILY MEMBERS TO GIVE HIM A BETTER CHANCE WITH THE WELFARE OF FINDING HIM HIS FOREVER HOME .

DIESEL WAS BORN IN YORKSHIRE AND SPENT MOST OF HIS LIFE IN UNSUITABLE SURROUNDINGS. THIS HAS SURPRISINGLY NOT HAD AN EFFECT ON HIM AS HE IS BOTH LOVING AND OBEDIENT.

DIESEL HAS LIVED WITH 2 SMALLER MIX BREED DOGS THAT WERE CONSTANTLY ATTACKING HIM, SO BEFORE DIESEL DECIDED HE'D HAD ENOUGH IT WAS DECIDED THAT IT WAS BEST GET HIM AWAY FROM A SITUATION.

DIESEL SHOWS TOLERANCE NEAR OTHER DOGS AND DID LISTEN TO A FIRM "NO" WHEN HE SAW THE CATS. HE EATS WELL, HE IS HAPPY TO BE HANDLED. REQUIRES OCCASIONAL EYE DROPS WHICH HE IS HAPPY TO HAVE THESE ADMINISTERED AND CHEAP FROM ANY CHEMIST.

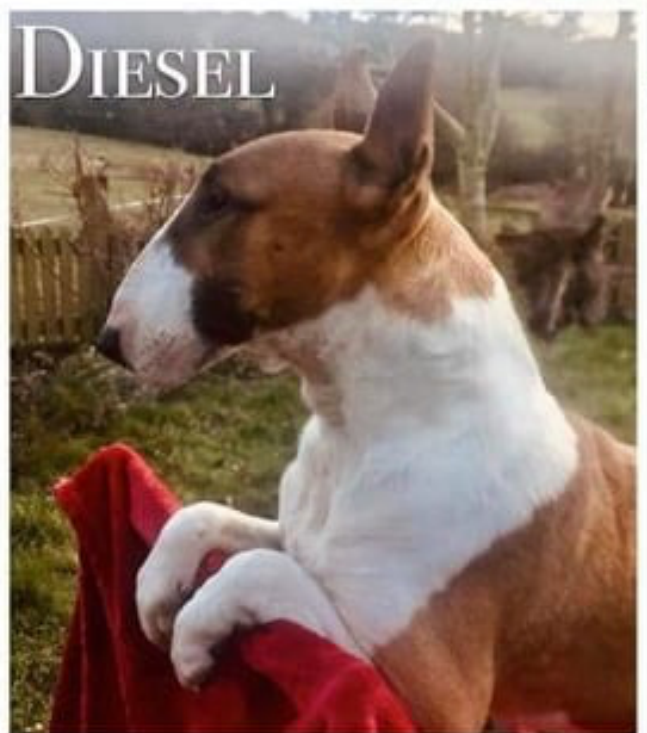
DIESEL IS GREAT IN A CAR. STILL A BIT STRONG ON THE LEAD. SITS, STAYS AND

WAITS FOR INSTRUCTION.

THIS BOY
DESERVES A
FAMILY OF
HIS OWN.
STABILITY
IN HIS LIFE.
A HANDSOME
BOY PROUD
FOR ANYONE.



DIESEL



Thankyou For Taking The Time To Read This



HELLO

MY NAME IS.....

ODIN



INTRODUCING ODIN

THIS WONDERFUL ALL WHITE BULL TERRIER ARRIVED INTO WELFARE NOT IN THE VERY BEST OF CONDITIONS. NOW FULLY RECOVERED AND WAITING FOR HIS SPECIAL FAMILY .

ODIN WAS BORN IN WALES AND SOME HOW ENDED UP IN A ALL BREEDS RESCUE KENNEL. HE WAS BEING OVER LOOKED PROBABLY BECAUSE HE HATES THE KENNEL PREFERRING HOME COMFORTS BUT MOST OF ALL BEING WITH HIS FAMILY .

A FIRM FAVOURITE OF WELFARE, THIS 7 YEAR OLD YOUNG MAN CAN BE SUMMED UP IN A FEW WORDS, DEVOTED, KIND, LOVING, ATHLETIC, QUICK TO LEARN, WANTS TO PLEASE .
ODIN HAS BEEN CASTRATED FULLY VACCINATED AND OF COURSE CHIPPED. ODIN HAS A DEEP SCAR ON HIS BACK NOW FULLY HEALED. WE HAVE NO HISTORY OF HOW HE GOT THIS.

ODIN IS NOW TAKING A TABLET A DAY FOR BLADDER CONTROL WHICH HAS NO SIDE EFFECTS. THIS MEDICATION COST WILL BE SUPPORTED FOR THE REST OF ODIN LIFE BY THE WELFARE TRUST. HE TAKES IT QUITE EASILY.

HE LOVES A GOOD WALK SO AN ACTIVE FAMILY WOULD SUIT HIM, HE COULD TOLERATE WELL BEHAVED AND SUPERVISED CHILDREN .

ODIN IS NOT GOOD WITH CATS. HE WILL IGNORE DOGS WHEN OUT ON A WALK. HE IS EXCELLENT ON THE LEAD, WILL NOT PULL AT ALL. A BIG GENTLE GIANT .

ODIN TRAVELS GREAT IN A CAR. HE IS HAPPY TO BE HANDLED ALL OVER. HE GREETES EVERYONE WITH A BEAUTIFUL SMILE. SOME

LUCKY PERSON OR FAMILY WILL BE PROUD TO OWN SUCH A DOG AS ODIN.

HE NEEDS HIS FOREVER HOME. HE DESERVES IT.



Thankyou For Taking The Time To Read This



HELLO

MY NAME IS.....**REGGIE**

INTRODUCING REGGIE

REGGIE IS A VERY HANDSOME 10 MONTH PUPPY IS A TYPICAL BULLY TO HAVE AROUND. ALL HE REQUIRES IS A FAMILY WITH BULLY PUPPY EXPERIENCE, GOOD FOOD, EXERCISE FOLLOWED BY A SOFT WARM BED .

REGGIE WAS BORN IN THE MIDLANDS AND LIVED WITH A FAMILY WHO HAD CHILDREN. UNFORTUNATELY THE FAMILY SPLIT WAS THE REASON HE FOUND HIMSELF IN BULL TERRIER WELFARE .

REGGIE WAS SPENDING FAR TO MUCH TIME ON HIS OWN AS HIS OWNER HAD TO GO OUT TO WORK AND OWNERS ELDERLY MUM COULD NOT MANAGE A BOUNCING PUPPY.

REGGIE SHOWS NO AGGRESSIVE BEHAVIOUR AROUND OTHER DOGS. UNSURE OF CATS.

A CLEAN BILL OF HEALTH, HE HAS NOW BEEN CASTRATED, HE IS FULLY VACCINATED AND CHIPPED .

REGGIE IS SPOTLESS CLEAN AROUND THE HOUSE AND ONLY REQUIRES A LITTLE MORE WORK WITH THE LEAD. TRAVELS GREAT IN A CAR.

A
HANDSOME
BOY WHO
WAS
MUCH
LOVED
AND
READY TO
BE LOVED
AGAIN .



REGGIE



Thankyou For Taking The Time To Read This



HELLO

MY NAME IS.....**NORA**

INTRODUCING NORA

NORA FOUND HERSELF ON THE STREET IN THE SOUTH OF ENGLAND AND WAS TAKEN TO A LOCAL DOG POUND WHERE SHE SAT FOR SOMETIME DURING WHICH SHE DEVELOPED AN HABIT OF BITING HER FEET AND SUFFERING WITH A LONG TERM UNTREATED EAR INFECTION .

NORA REQUIRED VETERINARY TREATMENT FOR BOTH CONDITIONS WHEN SHE FIRST ARRIVED WITH US, WHICH SHE HAS NOW RECEIVED AND BOTH ARE UNDER CONTROL. IF ANY FUTURE MEDICATION FOR EITHER CONDITION SHOULD IT BE REQUIRED IT WILL BE COVERED BY THE WELFARE TRUST FOR THE REST OF NORA'S LIFE .

NORA HAS BEEN SPAYED AND HAS HAD A DENTAL, NORA IS FULLY VACCINATED AND WORMED. NORA IS NOW RECOVERD AND READY FOR RE HOME.

SHE HAS HAD CONTACT WITH CHILDREN UNDER SUPERVISION. OCCASIONALLY IGNORES THE CAT. TRAVELS VERY WELL IN THE CAR . IGNORES DOGS AROUND HER BUT WELFARE FEEL SHE WOULD BE BEST SUITED AS AN ONLY DOG IN A QUIET HOME.

NORA ENJOYS A WALK BUT IS QUITE HAPPY TO PLOD AROUND A LARGE WELL FENCED GARDEN. NORA ENJOYS HER FOOD IS FULLY HOUSE TRAINED. NOT

PARTICULARLY BOTHERED ABOUT TOYS BUT TYPICALLY LOVES A WARM SOFT BED .

NORA NEEDS A SECOND CHANCE .



Thankyou For Taking The Time To Read This



HELLO

MY NAME IS..... **INDIE**

INTRODUCING INDIE

HE IS BRINDLE AND WHITE 7 YEARS YOUNG, MALE FOUND HIMSELF IN WELFARE UNDER TRAGIC CIRCUMSTANCES. WHAT A STORY HE COULD TELL..... INDIE WAS BORN IN FRANCE AND IS REGISTERED AS A MINIATURE BULLTERRIER UNFORTUNATELY THE PERSON WHO ORIGINALLY BROUGHT HIM OVER THE SEA REALISED THAT INDIE WAS GOING TO BE FAR TO BIG FOR EXHIBITING AS A MINI SO SOMEHOW HE ENDED UP IN ANOTHER RESCUE KENNEL. HE EVENTUALLY WAS RE HOMED WITH AN ELDERLY COUPLE WHICH SUITS HIS CHARACTER.

INDIE HAS A HEART MURMUR THAT AT DOES NOT REQUIRE MEDICATION. HE HAS RECENTLY HAD A DENTAL AND CASTRATION, INDIE IS FULLY VACCINATION AND KIDNEY FUNCTION IS NORMAL .

INDIE CAN BE DESCRIBED AS A RATHER CHUNKY LAD ON A DIET. HE IS MOST DEFIANTLY A COUCH POTATO. HIS MUCH LOVED AND DEVOTED OWNERS DOTED ON HIS EVERY NEED. HIS MASTER UNFORTUNATELY RECENTLY PASSED AND HIS LAST HOPE WAS FOR THE SAFE KEEPING OF HIS DOG. UNFORTUNATELY HIS MISTRESS HAS BEEN CONFINED IN TO PALLIATIVE CARE AS SHE HERSELF IS GRAVELY ILL .

INDIE WILL TOLERATE SOME QUIET DOGS AND WILL ON OCCASIONS IGNORE THE CATS. HE IS A LITTLE STRONG ON THE LEAD . TRAVELS WELL IN THE CAR. HAPPY TO GO A WALK BUT NOT TO FAR UNLESS FOOD INVOLVED. CAN

YOU OFFER A FAMILY HOME FOR THIS BOY WHO HAS SADNESS IN HIS LIFE MORE THAN MOST



INDIE



INDIE

Thankyou For Taking The Time To Read This



HELLO

MY NAME IS..... **JASPER**

INTRODUCING JASPER

JASPER IS A 14 MONTHS OLD BULL TERRIER. HE IS GOOD WITH OTHER DOGS. JASPER HAS BEEN TO THE VETS, CHECKED OVER AND IS NOW READY FOR A FOREVER HOME.

HE HAS BEEN CASTRETED AND HE IS VACCINATED AND MICRO-CHIPPED. BUT HAS TO GET HIS HEARING CHECKED.

ALL I NEED IS A FOREVER HOME

JASPER



Thankyou For Taking The Time To Read This



HELLO

MY NAME IS..... **CRAIG**

INTRODUCING CRAIG

THIS BOY WHITE WITH HEAD MARKINGS WAS BRED IN IRELAND BUT SOMEHOW FOUND HIMSELF IN A SOUTHERN ENGLAND DOG POUND. CRAIG'S CHARACTER IS TYPICAL OF ANY 9 YEAR OLD BULL TERRIER. FOOD AND A SOFT BED EVERY TIME. HE IS A CHUNKY MONKEY. LETS EVERYONE KNOW WHEN IT IS FOOD TIME. HAPPY TO PROBABLY LOOKING FOR MORE.

CRAIG IGNORES OTHER DOGS AND OCCASIONALLY THE CATS AROUND MAYBE HE CAN'T BE BOTHERED TO CHASE THEM. HOWEVER WHEN IT COMES TO PLAYING WITH A BALL CRAIG'S CHARACTER CHANGES TO THAT OF A PUPPY. HE CAN GET A LITTLE OBSESSED TO THE POINT OF SCUFFING HIS NOSE BUT IS HAPPY TO HAVE ANY CREAM FROM A CHEMIST PUT ONTO IT AS LONG AS IT'S APPLIED AFTER FOOD TIME OR HE WILL SIMPLY LICK IT ALL OFF.



CRAIG BEEN LOOKED OVER BY A VET AND PASSED FIT FOR RE HOME. HE HAS BEEN CASTRATED, WORMED, CHIPPED AND VACCINATED. CRAIG WILL TELL YOU WHEN HE NEEDS TO GO OUT BUT BETTER BE QUICK AS HE WON'T HOLD IT BACK.

CRAIG'S CHARACTER CAN BE SUMMED WITH WORDS LIKE, LOVING, CHUNKY, SLEEPY, A COUCH POTATO. HE IS FOOD ORIENTED (NOT A BAD THING ESPECIALLY FOR TRAINING)

AN OLDER COUPLE OR
QUIET HOME FOR
THIS OLD BOY
WOULD BE
IDEAL BUT
IF FOOD
INVOLVED
THEN ANY
HOME
REALLY.



Thankyou For Taking The Time To Read This



Correo electronico -
agus.chapa24@hotmail.com

Facebook - Agustin Infantes
Tarran Bull



Correo electronico -
agus.chapa24@hotmail.com

Facebook - Agustin Infantes
Tarran Bull



Correo electronico -
agus.chapa24@hotmail.com

Facebook - Agustin Infantes
Tarran Bull



Correo electronico -
agus.chapa24@hotmail.com

Facebook - Agustin Infantes
Tarran Bull



Correo electronico -
agus.chapa24@hotmail.com

Facebook - Agustin Infantes
Tarran Bull



Correo electronico -
agus.chapa24@hotmail.com

Facebook - Agustin Infantes
Tarran Bull



Correo electronico -
agus.chapa24@hotmail.com

Facebook - Agustin Infantes
Tarran Bull



Correo electronico -
agus.chapa24@hotmail.com

Facebook - Agustin Infantes
Tarran Bull



Correo electronico -
agus.chapa24@hotmail.com

Facebook - Agustin Infantes
Tarran Bull



Correo electronico -
agus.chapa24@hotmail.com

Facebook - Agustin Infantes
Tarran Bull





Correo electronico -
agus_chapa24@hotmail.com

Facebook - Agustin Infantes
Tarran Bull



Correo electronico -
agus_chapa24@hotmail.com

Facebook - Agustin Infantes
Tarran Bull



Correo electronico -
agus_chapa24@hotmail.com

Facebook - Agustin Infantes
Tarran Bull



Correo electronico -
agus_chapa24@hotmail.com

Facebook - Agustin Infantes
Tarran Bull



Correo electronico -
agus_chapa24@hotmail.com

Facebook - Agustin Infantes
Tarran Bull



Correo electronico -
agus_chapa24@hotmail.com

Facebook - Agustin Infantes
Tarran Bull



Correo electronico -
agus_chapa24@hotmail.com

Facebook - Agustin Infantes
Tarran Bull



Correo electronico -
agus_chapa24@hotmail.com

Facebook - Agustin Infantes
Tarran Bull



Correo electronico -
agus_chapa24@hotmail.com

Facebook - Agustin Infantes
Tarran Bull



Correo electronico -
agus_chapa24@hotmail.com

Facebook - Agustin Infantes
Tarran Bull





Correo electronico -
agus_chapa24@hotmail.com

Facebook - Agustin Infantes
Tarran Bull



Correo electronico -
agus_chapa24@hotmail.com

Facebook - Agustin Infantes
Tarran Bull



**Correo electronico -
agus_chapa24@hotmail.com**

**Facebook - Agustin Infantes
Tarran Bull**





Felipe M

Photography & Desing

Facebook / FelipeM-fotografías&diseño

Correo : felipe.moreno.pemjean@gmail.com

Celular : +569-65477053

Beatriz Hermo

Integral or individual service of advertising campaigns,
drawings and handling focused on breeders, individuals and/or professional handlers

Freelance Designer, Illustrator & Handler



Contact Information

Beatriz Hermo

@ELHERMOBEATRIZ

TELF: +34 622179756

Email: eubeatrizhermo@gmail.com



**Liquors and gins made with passion and a lot of personality.
Welcome to our Bull Terrier world.**

www.licoresbullterrier.es

