 13.12.2024

## **APPLIED AI – KUHMO CASE**

Insights from Industry Practices

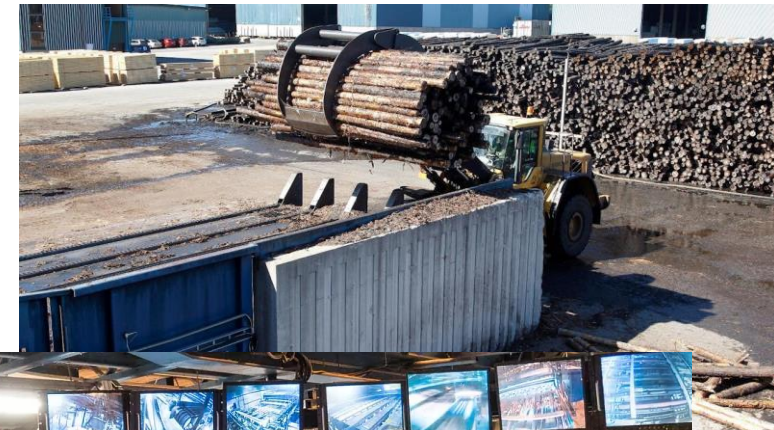
Ahsan Muneer

## CASE STUDY – WOOD LOG CLASSIFICATION USING TRANSFER LEARNING

In sawmills, wood logs are sorted by size, volume, and quality based on product-specific requirements.

**Challenge:** Initial quality inspections of wood logs are labor-intensive and time-consuming.

**Solution:** Develop an automated data pipeline to assess the quality of wood logs (accepted or rejected) using grayscale X-ray images, reducing dependency on manual checks and improving efficiency.





## KEY TAKEAWAYS

- Role of ready-made CNNs and transfer learning in the data industry.
- Availability and accessibility of data in the “real world” + the efforts of labeling.
- ➔ Data Augmentation was used here as a quick solution to gain some additional accuracy, but more data would be better.



**Thank you!**