

# RKM-Kisa 20



**Oil Pattern Distance:** 42 Feet      **Reverse Brush Drop:** 35 Feet      **Oil Per Board:** 45 uL  
**Forward Oil Total:** 14.31 mL      **Reverse Oil Total:** 6.795 mL      **Volume Oil Total:** 21.105 mL  
**Forward Boards Crossed:** 318 Boards      **Reverse Boards Crossed:** 151 Boards      **Total Boards Crossed:** 469 Boards

	Start	Stop	Loads	Speed	Crossed	Start	End	Feet	T.Oil
1	2L	2R	3	14	111	0.0	3.9	3.9	4995
2	8L	8R	2	18	50	3.9	9.0	5.1	2250
3	10L	10R	3	18	63	9.0	16.6	7.6	2835
4	12L	12R	3	18	51	16.6	24.2	7.6	2295
5	13L	13R	2	22	30	24.2	30.4	6.2	1350
6	14L	14R	1	22	13	30.4	33.5	3.1	585
7	2L	2R	0	26	0	33.5	42.0	8.5	0

	Start	Stop	Loads	Speed	Crossed	Start	End	Feet	T.Oil
1	2L	2R	0	30	0	42.0	32.0	-10.0	0
2	13L	13R	4	22	60	32.0	19.6	-12.4	2700
3	12L	12R	2	18	34	19.6	14.5	-5.1	1530
4	11L	11R	3	18	57	14.5	6.9	-7.6	2565
5	2L	2R	0	14	0	6.9	0.0	-6.9	0

Conditioner:  
Type In or Select One

TransferType:  
Type In or Select One

Forward



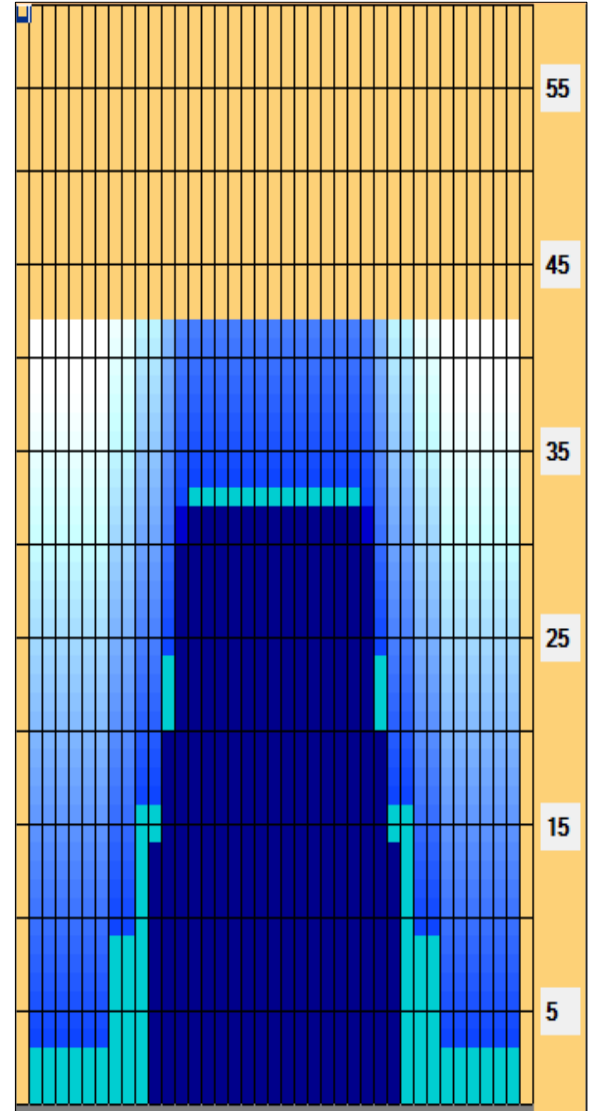
Reverse



Combined



Buff



Item	3L-7L:18L-18R	8L-12L:18L-18R	13L-17L:18L-18R	18L-18R:17R-13R	18L-18R:12R-8R	18L-18R:7R-3R
Description	Outside Track:Middle	Middle Track:Middle	Inside Track:Middle	Middle: Inside Track	Middle:Middle Track	Middle:Outside Track
Track Zone Ratio	7.67	2.56	1.01	1.01	2.56	7.67

