

TKK syys erikoinen



Oil Pattern Distance: 43 Feet **Reverse Brush Drop:** 37 Feet **Oil Per Board:** 40 uL
Forward Oil Total: 12.24 mL **Reverse Oil Total:** 8.96 mL **Volume Oil Total:** 21.2 mL
Forward Boards Crossed: 306 Boards **Reverse Boards Crossed:** 224 Boards **Total Boards Crossed:** 530 Boards

	Start	Stop	Loads	Speed	Crossed	Start	End	Feet	T.Oil
1	4L	4R	3	14	99	0.0	3.9	3.9	3960
2	12L	12R	3	14	51	3.9	9.8	5.9	2040
3	13L	13R	4	18	60	9.8	20.0	10.2	2400
4	14L	14R	4	18	52	20.0	30.2	10.2	2080
5	15L	15R	4	18	44	30.2	40.4	10.2	1760
6	2L	2R	0	26	0	40.4	43.0	2.6	0

	Start	Stop	Loads	Speed	Crossed	Start	End	Feet	T.Oil
1	2L	2R	0	30	0	43.0	35.0	-8.0	0
2	14L	14R	2	22	26	35.0	28.8	-6.2	1040
3	13L	13R	2	18	30	28.8	23.7	-5.1	1200
4	12L	12R	2	18	34	23.7	18.6	-5.1	1360
5	11L	11R	2	18	38	18.6	13.5	-5.1	1520
6	10L	10R	2	18	42	13.5	8.4	-5.1	1680
7	7L	7R	2	18	54	8.4	3.3	-5.1	2160
8	2L	2R	0	14	0	3.3	0.0	-3.3	0

Conditioner:
Type In or Select One

TransferType:
Type In or Select One

Forward



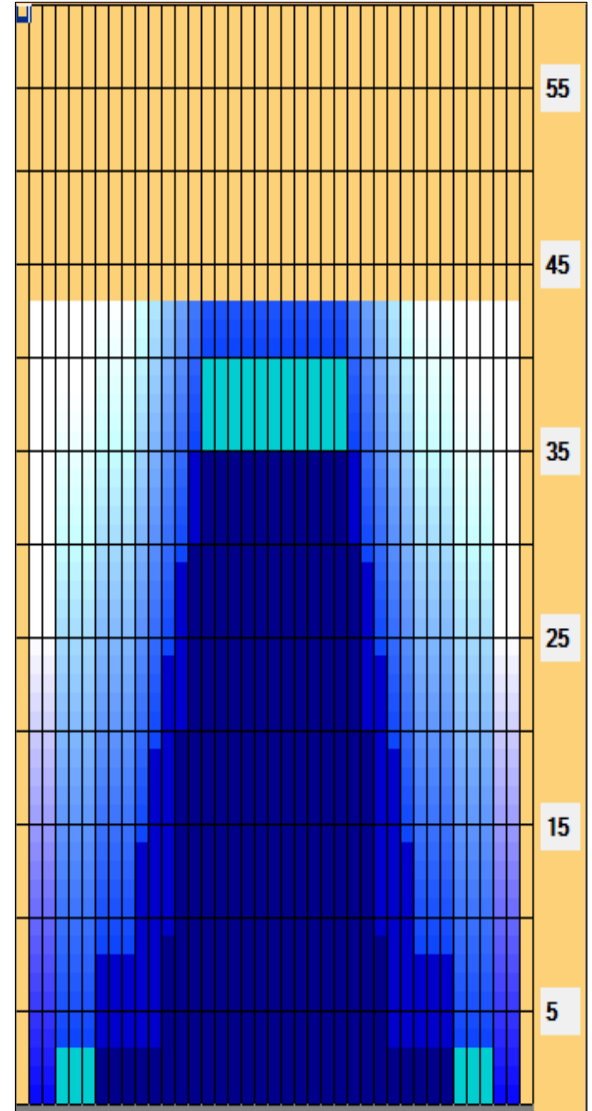
Reverse



Combined



Buff



Item	3L-7L:18L-18R	8L-12L:18L-18R	13L-17L:18L-18R	18L-18R:17R-13R	18L-18R:12R-8R	18L-18R:7R-3R
Description	Outside Track:Middle	Middle Track:Middle	Inside Track:Middle	Middle: Inside Track	Middle:Middle Track	Middle:Outside Track
Track Zone Ratio	10.71	3.75	1.1	1.1	3.75	10.71

