

# WORKCAMP MTV PROGRAM

PROGRAM  
INFORMATION  
FOR CCIVS &  
GENERAL  
PARTNERS

2025

**DEJAVATO  
INDONESIA**



# Contents

1. Preface
2. Dejavato Foundation
  - 2.1. Vision
  - 2.2. Mission
  - 2.3. Structures
  - 2.4. Finance
  - 2.5. Programs
  - 2.6. Membership
  - 2.7. Principles of work
3. Program
  - 3.1. Workcamp
  - 3.2. Mid Term Volunteer (MTV)

## 1. Preface

Dear partners (“Salam” in Bahasa)

Hereby we provide you Dejavato Foundation’s national profile that will give you information and advices about your time in Indonesia, especially giving you a glance information about Dejavato Foundation, Indonesia, cultures, visa and others that will help you in preparing your trip and stay in Indonesia. By reading this, it will give you more understanding about Indonesia. We are very sure that you may have a lot of curious and questions to know more about Indonesian culture, language (Bahasa) and Indonesia as such. For further information about Dejavato and our projects, it would be our honor if you could visit our website at [www.dejavato.or.id](http://www.dejavato.or.id). If you still need some more information that perhaps you can not find in this document, please feel free to contact us and our staffs will be more than happy to assist, answer and giving you additional helps. We look forward to meeting you in Indonesia, and wish you a wonderful and pleasant trip to our unique country.

## 2. Dejavato Foundation

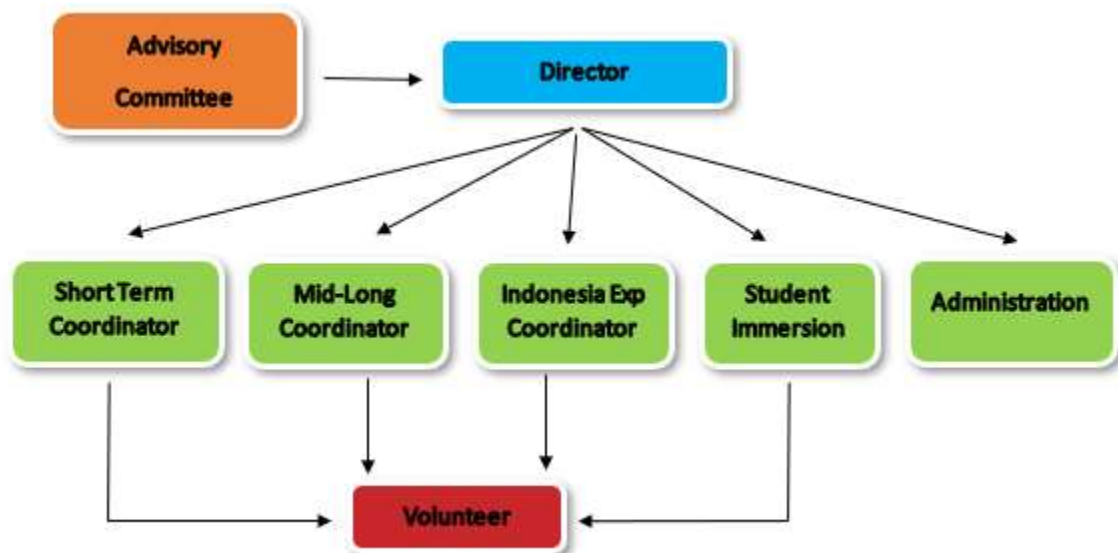
### 2.1. Vision

Becoming a leading national and international organization that supports active citizenship through voluntary service.

### 2.2. Mission

- a. To promote voluntary service in Indonesia and overseas through education, social and cultural sectors.
- b. To encourage Indonesian people especially young generation to be actively involved in doing voluntary service in Indonesia and overseas.
- c. To promote intercultural understanding, equality, tolerance and world peace.
- d. To develop awareness and responsibility towards social environment.
- e. To promote various and unique Indonesian culture and nature to the international society.

### 2.3. Structures



Dejavato is a Foundation registered to the Ministry of Law and Human rights. According to its constitution, it is composed by a board of founders, a board of directors and an advisory board (also called board of supervisors).

#### **2.4. Finance**

The Foundation manages its own fund and takes its income from participation fees, individual donations and corporate donations (both in money and kind).

#### **2.5. Programs**

Dejavato's International Voluntary Service projects aim at supporting the development of young people and local communities all over the country. Projects are developed in the following fields: education, health care, renovation and general socio – cultural development.

##### **2.5.1. Group Short Term Project (Workcamp)**

A workcamp is a voluntary service project developed by a group of international volunteers who gather for a short time (2 weeks in general) to support a local community or an endangered natural area and to develop international dialogue and friendship. During the camp, volunteers work, live and have fun together. Depending on the program of each project, volunteers can join activities in different working fields such as cultural heritage, environment, education, construction and renovation. Ideally based on the needs of the host community, strong emphasis is put on the contact and dialogue with the local population and civil society.

##### **2.5.2. Individual Mid – Long Term Volunteer (MLTV)**

An individual voluntary service experience lasting from one to twelve months. Through this program, volunteers can support the creation and implementation of long term community development projects all over Indonesia. Individual volunteer usually live with Indonesian hosting families or centers. We have several programs of individual volunteer program like individual short term, MLTV, STePs, EVS, Civil Service.

###### **a. Individual Short Term**

An individual voluntary service experience lasting from one to four weeks

###### **b. Mid Term Volunteer & STePs**

MTV and STePs is a volunteer exchange program for individual with duration 4 – 12 weeks. A Volunteer is free to choose the country destination and project.

###### **c. European Voluntary Service (EVS)**

EVS is funded volunteer exchange program supported by European Commission for youth with the age 18 – years old for a period 1 month to 12 months. Thus the destination country is decided by the committee.

###### **d. Long Term Volunteer (LTV)**

Volunteer exchange program for individual with duration 5 months to 12 months, country destination and project is chosen according to the candidate's interest.

##### **2.5.3. Student Immersion**

Student Immersion is an exchange and immersion program to overseas for Indonesian students with the age between 6 - 17 years old with a purpose of education and cultural immersion for 7 – 15 days. Through this program, students have the opportunity for soft skills development, self-development, self-reliance, interaction with international society, practicing foreign languages and building new friendship.

#### 2.5.4. Indonesia Experience

This is a group project of volunteering project combined with the activities of learning Indonesian culture. Mostly the group are bilateral project from one organization.

#### 2.5.5. Dejavato Cares

Dejavato takes role in social activity for our people who are underprivileged and those who are facing difficult situation caused by natural disaster as well as emergency situation by giving financial support, medical service and sending volunteers. In education field, Dejavato supports children who are underprivileged by raising fund and give scholarship and stationary. Dejavato is open and encourage those who are willing to give contribution and be foster parents for those students.

### 2.6. Membership

Dejavato Foundation is

- Member of **CCIVS – UNESCO** (Coordinating Committee for International Voluntary Service)
- Member of **ICYE Federation** (International Cultural Youth Exchange)
- Member of **NVDA** (Network for voluntary development in Asia)
- Official partner of the **Alliance** of European Voluntary Service Organization

### 2.7. Principles of work

#### 2.7.1. General Matter

- Dejavato will do its best to respect and follow the standard procedures and principals of work of the networks it is member of and cooperate with: the CCIVS and NVDA Inter-Regional Exchange procedures, the Alliance Guidelines and ICYE Guidelines. In general the Foundation will do its best to organize projects taking profit of the experience of its director, members and supporters. Please help us in organizing good quality projects by sending us your comments and those of your volunteers.
- During the project (starting from the arrival of the volunteers) Dejavato will do its best to support the volunteers and to facilitate constructive and educational experiences. However, our projects are organized according to Indonesian standards of living and culture and the volunteers will need to adapt to simple living conditions and local food. In our projects, such as in any Indonesian family, volunteers will eat rice three times a day, shower with cold water and use local style toilets.
- We expect the sending organisations to systematically provide the volunteers with our documentation (workcamp program, workcamp infosheet, national profile, travel guidance and volunteer agreement) and at least introduce International Voluntary Service fundamental principles. We recommend holding pre-departure trainings for your participants and introducing the basis of Intercultural learning and cultural diversity, non-violent communication, problem solving, conflict management, and active participation to a voluntary service project. The philosophy of volunteerism is the base of our work here and we expect your volunteer to understand, share and participate to it actively.
- Most of our projects take place in villages or in closed contact with local Muslim communities and institutions. Drinking alcohol is not allowed / strictly prohibited in all circumstances under Dejavato's program especially when in the hosting family, at the project site or when volunteers are with children/students. Volunteers should be informed by their sending organization before departure and are requested to read our documents to find out more about the do's and do not's of Indonesian culture.

#### 2.7.2. Principles for group project (workcamp)

- All the projects presented in this document are international projects. We try to reach a maximum cultural diversity and gender balance in the composition of our groups but you might find more than 2 volunteers from the same country in the same project.

- All volunteer can apply Visa on Arrival (VoA) at the arrival airport which cost Rp. 500.000 (around 35 Euro) – please check again through the website of the embassy of immigration just in case the price is change.
- All our projects are open to volunteer who are from 18 - 40 years old when the workcamp starts. Above 40 years old upon consultation.
- We are sorry NOT open for volunteer with many causes and conditions which can impair mobility and movement such as inability to use legs, arms, or the body trunk effectively because of paralysis, stiffness, pain or other impairment is common. People with mobility and movement impairments may find it difficult to participate when facing social and physical barriers especially in our project sites.
- We are NOT open for any mentally challenged participants and participants who had mentally challenged record due to lack of our capability in handling the people with mental disabilities. Our project also do not have facilities which can support participants with mental disabilities. We request the sending organization to be open, transparent in giving information about the participant’s health and mentally record. We prefer not to host the participants with mentally challenged and mentally challenged record such as autism, mental disabilities etc.
- The volunteers are expected to attend the whole duration of the project and any delays in the arrival or departure MUST be officially justified and announced in advance. The incoming officer and the camp leader will keep the right to cancel the inscription of a volunteer or not accept her/him on the camp for any unjustified or not announced delay superior to 24 hours after the arrival day. In most cases, the meeting point for the volunteers is at the project site or other city which is the closest to the project site. Late arrivals may complicate the arrangement of the travel to the project site. Dejavato likes to organize something for the volunteers to do as a group during their free time and weekends. This will be discussed during the orientation and the first days of the project. Depending on the activity, volunteers may need to cover their own expenses. Please inform your participants that personal plans should be only foreseen before or after the workcamp.
- All the volunteers are required to individually subscribe a private insurance for the whole duration of the project, covering third party liability, health care and repatriation. A proof of the subscription, will be required at the beginning of the camp by our camp leader. No exception will be allowed. Thanks to inform your volunteer in advance.
- The basic timetable on Dejavato’s camps is about 30-35 hours of work per week, generally from Monday to Saturday, but the necessities of the project can bring the volunteers to work some more (rarely less).
- The common languages of the workcamps will be English and Indonesian (bahasa). We encourage volunteers to learn a bit of basic Indonesian before arrival (please refer to our info sheets and info pack for more information). Low levels of English language should not discourage motivated volunteers as, in communication, “When there’s a will, there’s a way”
- In most of the projects, daily timetable and tasks, free time and global organization will be decided in common, facilitated by the coordinator following the needs of the project, and managed in teams. We expect on each workcamp to create a really strong team of volunteers, for the benefit of the project and the local community.
- There will always be at least one English-speaking Indonesian coordinator per camp and for the whole duration of the project and the volunteers will have an emergency number active 24/24 – 7/7 to use in case of major problem.
- It is not necessary anymore participant to be Covid-19 vaccinated or show vaccines certificates. Indonesia has lifted all Covid-19 travel restrictions, including the mandatory vaccination requirement for both international and domestic travelers. This move comes as a result of the government's review of ongoing management of Covid-19 in the country and adjustment of control mechanisms to health protocols during the endemic transition period. Unvaccinated travelers are now permitted to enter Indonesia and travel domestically within the country

- Dejavato asks certain amount of the program fee for each project. The extra fee covers the overall project expenses (including allowance for the workcamp coordinator), the running costs of the Foundation, the preparation of the projects and the Dejavato education and care programs (a percentage of each fee is transferred to the Dejavato fund). The fee IS NOT included the flight, insurance, and any other personal expenses.
- **The payment should be paid in advance maximum 1 month (30 days) before the project started via online transfer through WISE Online transfer.** The volunteer MUST transfer the money in RUPIAH (see the fixed amount from the project description for each project) currency via WISE online transfer to our bank account as follow:
  - Account Holder : Yayasan Dejavato
  - Address of holder : Jl. Bukit Panjangan Asri M-7, Semarang , Central Java – Indonesia
  - Email : info@dejavato.or.id
  - Bank Account # : 014 – 651 – 3074
  - Bank name : Bank BNI 46 (Bank Negara Indonesia)
  - Bank address : Jl. Jend.Sudirman No. 195 Semarang, Central Java - Indonesia
  - SWIFT Code : BNINIDJAKRU
- The payment in RUPIAH then must follow our fixed rate for 1 year which is 1 Euro = IDR 18.000. We set up this fixed rate for the programs due to unpredictable currency Euro fluctuation.
- IMPORTANT - If the volunteer do not pay 1 Month (30 days) before the project started then automatically cancelled. Then we will not let the volunteer to join our project for any reason.
- Volunteers should purchase an insurance before the beginning of the project. The insurance should cover at least health care, third party liabilities and repatriation.
- Volunteer SHOULD NOT buy flight ticket at before the project is really confirmed, to avoid the cancellation of the project due to lack of participant, please contact and confirm again to the organization for last update information. The project will be run ONLY if the minimum participants are 4 people
- There is **NO REFUNDABLE FEE** if the participants stop the participation when the camp or project is running
- The fee covers :
  - a. Orientation
  - b. Administration fee
  - c. Transportation to/from the meeting point to/from project site
  - d. Accommodation and food during the project (including scheduled activities)
  - e. Evaluation meeting
  - f. An English speaking camp coordinator (trained and experienced)
  - g. Emergency number 24/24 – 7/7
  - h. Access to material that could be useful for the project
  - i. A certificate at the end of the project to attest your participation
- The fee does not cover :
  - a. Travel (medical) and cancellation insurance
  - b. Air transportation and leisure activities
  - c. Changes in the project, once the placements has been confirmed (unless in very special cases)
  - d. Bath and washing kits
  - e. Pick up service at Semarang city (airport/train station/bus terminal)
  - f. The fees excludes all cost associated with the pandemic Covid-19 (Swab Test, board and lodging during quarantines, hospital, insurance etc)

### 2.7.3. Principles for Individual Volunteer Program (Mid-Long Term Volunteer)

- All our projects are open to volunteer who are from 18 – 40 years old when the project starts. Above 40 years old upon consultation.

- Indonesia is a conservative country and especially when volunteers work in the local institution and community. We request the volunteers **no visible piercings on face, no visible tattoos**, wears clothing appropriate, common hair style (no colorful, dreadlock) and for those who are going for project related with the kids must attach Certificate Good Conduct from the police in the application. The volunteer should love to work with children, teenager and local people, open minded, be mature, respectful of local customs, tolerant, creative, flexible, patient, confidence and independent especially in motivating the students to speak up and be active in practicing conversation.
- Candidate should sign document project agreement, declaration of conduct and other documents requested by hosting organization. The form must be signed and sent back to Dejavato before coming to Indonesia.
- The projects are mainly related to education and health care. For the educational/teaching projects a minimum intermediate level of English (as much certified as possible) is required while for the health care projects the Foundation requires a proof that the applicants are medical students or practitioners.
- Volunteers will be supported by the local project responsible, a mentor (usually a Dejavato volunteer who is not involved in the project activities) and Dejavato office. Regular meeting between the volunteer and the mentor will be organized and facilitated by the Foundation. The volunteers will have at their disposal an emergency number active 24/24 – 7/7 in case of major problem.
- We are sorry NOT open for volunteer with many causes and conditions which can impair mobility and movement such as inability to use legs, arms, or the body trunk effectively because of paralysis, stiffness, pain or other impairment is common. People with mobility and movement impairments may find it difficult to participate when facing social and physical barriers especially in our project sites.
- We are NOT open for any mentally challenged participants and participants who have mentally challenged record due to lack of our capability in handling the people with mental disabilities. Our project also do not have facilities which can support participants with mental disabilities. We request the sending organization to be open, transparent in giving information about the participant's health and mentally record. We prefer not to host the participants with mentally challenged and mentally challenged record such as autism, mental disabilities etc.
- Dejavato requires the individual Mid-Long Term Volunteer to hold visa before entering Indonesia. The visa should be Social Visa Type C6B which should be applied by the volunteer him/herself or the hosting organization / Dejavato. The visa will valid for 60 days and can be extended two times for maximum stay 6 months (180 days). If the volunteer wants to stay over 6 months to 12 months, the possible visa will be needed by approval of the immigration office in Indonesia. This is a Single Entry visa, which only allows volunteer to enter Indonesia only. Once the volunteer leaves Indonesia, then the visa will be automatically expired. You must apply new visa from the start again.
- Projects starts at the beginning and finishes at the end of the indicated months (please check the MLTV project list you find below). Due to the complication of visa regulation, the placements are between one to twelve months with the limitation of the days (**pay attention to the number of the days**) and we request the volunteers to contribute the visa extension cost partially.
- Meeting point for MLTV volunteers is the Dejavato office in Semarang; the volunteers will receive detailed and complete information about the project, Indonesia and the way to the meeting point upon confirmation of the placement and non after 4 weeks before the beginning of the project.
- Upon arrival volunteers will be involved in our orientation workshop, in Dejavato office. The orientation will be dedicated to the project, Indonesia, Indonesian language, intercultural learning and communication. Attention will be paid to the introduction to the life in a local Indonesian family.



- The volunteers will be hosted at a dormitory of the project or at a local Indonesian families and receive three meals per day (rice with side vegetables and dishes). The accommodation will be simple and Indonesian style: no hot water, traditional Indonesian bath/shower, no washing machine and traditional Indonesian toilet. Volunteers may be required to share the bedroom with another family member and to adapt to the daily rhythm of the family (Indonesians usually gets up very early, between 4 and 6 o' clock).
- Drinking alcohol is not allowed during participating in our program for any reason and not well seen by traditional Muslim families. Smoking is allowed only in restricted areas (depending on the hosting family) and should be avoided when with children and scholars.
- Volunteers are required to work at least 7 hours a day, 5 days a week (Mon-Fri) and to help the family with the daily chores. Holidays will be organized according to the Indonesian calendar and the project situation, then volunteers will be able to plan their holidays and free time with the local project coordinator upon arrival and during the project.
- Dejavato asks certain amount of the program fee for each project. The extra fee covers the overall project expenses, the running costs of the Foundation, the preparation of the projects and the Dejavato education and care programs (a percentage of each fee is transferred to the Dejavato fund). The fee IS NOT included the flight, insurance, and any other personal expenses.
- The payment should be paid in advance maximum 1 month (30 days) before the project started via online transfer through WISE Online transfer. The volunteer MUST transfer the money in RUPIAH (see the fixed amount from the project description for each project) currency via WISE online transfer to our bank account as follow:
  - Account Holder : Yayasan Dejavato
  - Address of holder : Jl. Bukit Panjangan Asri M-7, Semarang , Central Java – Indonesia
  - Email : info@dejavato.or.id
  - Bank Account # : 014 – 651 – 3074
  - Bank name : Bank BNI 46 (Bank Negara Indonesia)
  - Bank address : Jl. Jend.Sudirman No. 195 Semarang, Central Java - Indonesia
  - SWIFT Code : BNINIDJAKRU
- The payment in RUPIAH then must follow our fixed rate for 1 year which is 1 Euro = IDR 18.000. We set up this fixed rate for the programs due to unpredictable currency Euro fluctuation.
- IMPORTANT - If the volunteer do not pay 1 Month (30 days) before the project started then automatically cancelled. Then we will not let the volunteer to join our project for any reason.
- The fees excludes all cost associated with the pandemic Covid-19 (Swab Test, board and lodging during quarantines, hospital, insurance etc)
- Unvaccinated travelers are now permitted to enter Indonesia and travel domestically within the country
- Volunteers should purchase an insurance before the beginning of the project. The insurance should cover at least health care, third party liabilities and repatriation.
- Volunteer SHOULD NOT buy flight ticket at before getting the visa. It is a mandatory that the volunteer should hold the visa for joining our MLTV program. Dejavato will not responsible and will not accept the volunteer who doesn't hold the visa.
- There is **NO REFUNDABLE FEE** if the participants stop the participation when the camp or project is running
- The fee covers :
  - a. Orientation
  - b. Pick up service at Semarang city (airport) maximum at 09.00 pm with condition arrival between Monday to Friday. There will be no pick up service on the weekend (Sat-Sun).
  - c. Administration fee
  - d. Transportation to/from the meeting point to/from project site

- e. Accommodation and food during the project (including scheduled activities). The food and accommodation will be provided ONLY starting from the day of arrival volunteer at Dejavato's office.
- f. Evaluation meeting
- g. Emergency number 24/24 – 7/7
- h. Access to material that could be useful for the project.
- i. A certificate at the end of the project to attest your participation.
- The fee does not cover :
  - a. Cigarettes
  - b. Travel (medical) and cancellation insurance
  - c. Air transportation and leisure activities
  - d. Changes in the project, once the placements has been confirmed (unless in very special cases).
  - e. Bath and washing kits
  - f. The fees excludes all cost associated with the pandemic Covid-19 (Swab Test, board and lodging during quarantines, hospital, insurance etc)

#### 2.7.4. Visa Regulation

In an effort to harmonize the activities of voluntary service with visa procedures in Indonesia, so we asked for volunteers apply visa in accordance with the type of program that will be followed as follows:

- a. **Visa on Arrival for volunteer joining workcamp less than 30 days**  
This regulation applied for NON-ASEAN member countries with maximum stay up to 30 days. Volunteer who will join the WORKCAMP PROGRAM up to 2-3 weeks can apply for this visa. This type of visa cannot be extended
- b. **Single Entry Visit Visa Type C6 for Mid & Long Term Volunteer (MLTV)**  
Volunteer who will join for the individual program with duration from minimum 4 weeks to 6 months should apply for this visa. This type of visa is valid for 60 days starting from your arrival date and can be extended maximum 2 times at local immigration for stay up to 6 months. Every extension is valid for 60 days. After 6 months of stay the volunteer must leave Indonesia to the nearest country then enter again with new process again by having new E-Visa (Visit Visa).

Visa application is centrally managed by the Indonesian Immigration and accessible at [visa-online.imigrasi.go.id](https://online.imigrasi.go.id). Only the sponsor is allowed to apply for the visa on behalf of the visitor. Official information regarding e-Visa available at <https://www.imigrasi.go.id/en/> > Information > Single Entry > Choose Type of Visa

There are 2 options how to apply this visa:

1. Volunteer can apply for an Indonesian visa online by accessing the visa application at <https://evisa.imigrasi.go.id> by completing the requirements according to the purpose and type of visa and payment of immigration fees; OR
2. Dejavato apply for the visa. To apply this visa the volunteer MUST submit all required visa documents to Dejavato. Dejavato as the host organization will manage and apply for the visa. The issued e-Visa will be sent to Dejavato by Immigration

#### **Important Notes:**

For more detail information about visa for Indonesia please contact your sending organization or contact Dejavato to ask Visa Regulation Document for Indonesia.

#### 2.7.5. Wise Account for payment

Please transfer your payment to our bank account via WISE Online Transfer  
Beneficiary : YAYASAN DEJAVATO

Account # : 014 – 651 – 3074 (Indonesian Rupiah Currency Account)  
 Bank Name : Bank BNI 46 (Bank Negara Indonesia)  
 SWIFT Code : BNINIDJAKRU  
 Address : Jl. Jend. Sudirman 195 Semarang 50195 Central Java – Indonesia  
 Telephone : +62-24-76055021

**2.7.6. Cancellation Policy**

But unless you have a WISE account, it will be quite complicated to refund. All volunteer should pay the fee by 30 days before project start as the latest. If you are accepted later than that, you need to pay within 2 days from the acceptance.

If DEJAVATO is informed of cancellation	DEJAVATO will refund
By 30 days before the project start	50% of paid amount minus commission of card / WISE fee
Later than 30 days before the project start	No refund / nothing

If DEJAVATO makes cancellation	DEJAVATO will refund
By 30 days before the project start	100% of paid amount minus commission of card / WISE fee

**2.7.7. Contract for Participant**

In order to have a better experience, it will be useful for all of us to have an agreement of understanding. Please read carefully the following points. Please send it back before you come to Indonesia. **Will be sent after acceptance confirmation to the respective volunteer**

### 3. Program 2025

#### 3.1. Workcamp

##### INTERNATIONAL WORKCAMP 2025

##### Very Short Term Workcamp 2025 - 2026

No.	Code	Duration	Project	Location	Type
1.	DJVSTV-2501	20/04 – 26/04/2025	World Heritage A1	Prambanan Temple, Central Java	HERT+CUL+EDU+YOUTH
2.	DJVSTV-2502	20/04 – 26/04/2025	Elephant Conservation A1	Way Kambas, Lampung	ANIMAL+ENVI+EDU
3.	DJVSTV-2503	18/05 – 24/05/2025	World Heritage A2	Prambanan Temple, Central Java	HERT+CUL+EDU+YOUTH
4.	DJVSTV-2504	18/05 – 24/05/2025	Elephant Conservation A 2	Way Kambas, Lampung	ANIMAL+CONSERVATION
5.	DJVSTV-2505	11/08 – 16/08/2024	Central Bali	Ubud, Bali	EDU+CUL+YOUTH

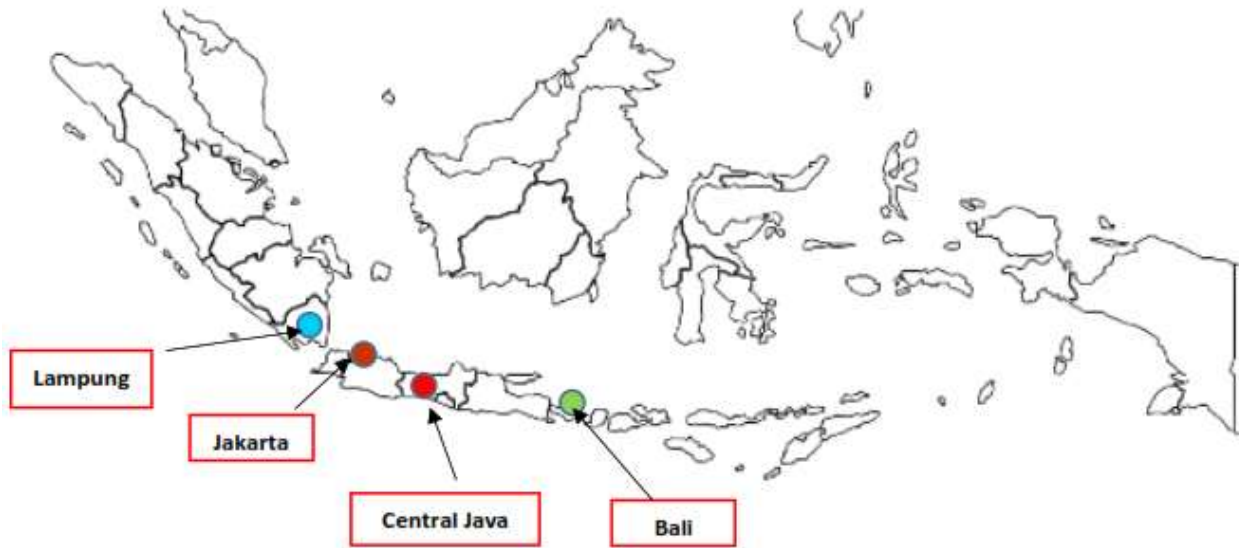
##### Short Term Workcamp 2025 - 2026

No.	Code	Date	Project	Location	Type
1.	DJ-2501	11/08 – 22/08/2025	World Heritage 1	Prambanan Temple, Central Java	HERT+CUL+EDU+YOUTH
2.	DJ-2502	28/07 – 08/08/2025	Bali Special Needs	Denpasar, Bali	DISABILITY+EDU+SOC
3.	DJ-2503	11/08 – 22/08/2025	West Bali 1	Jembrana/Buleleng Bali	EDU+CUL+SOC
4.	DJ-2504	11/08 – 22/08/2025	Elephant Conservation	Way Kambas, Lampung	ANIMAL+CONSERVATION
5.	DJ-2505	12/01 – 23/01/2026	World Heritage 2	Prambanan Temple, Central Java	HERT+CUL+EDU
6.	DJ-2506	12/01 – 23/01/2026	West Bali 2	Jembrana/Buleleng, Bali	EDU+CUL+SOC
7.	DJ-2507	12/01 – 23/01/2026	Elephant Conservation 2	Way Kambas, Lampung	ANIMAL+CONSERVATION

##### Bilateral Workcamp 2025 - 2026

No.	Code	Duration	Project	Location	Type
1.	DJBIL-2501	Upon request	World Heritage	Prambanan Temple, Central Java	HERT + EDU + YOUTH
2.	DJBIL-2502	Upon request	West Bali	Jembrana/Buleleng, Bali	EDU + RENO + YOUTH
3.	DJBIL-2503	Upon request	Central Bali	Ubud, Bali	EDU+CUL+SOC
6.	DJBIL-2504	Upon request	Elephant Conservation	Way Kambas, Lampung	ANIMAL+CONSERVATION

## INDONESIA : Workcamp Sites



### Project Locations:

- 1. Lampung Province**
  - Elephant Conservation Workcamp
- 2. Central Java Province**
  - World Heritage Volunteer Prambanan Workcamp
- 3. Bali Province**
  - Bali Special Needs Children Workcamp
  - West Bali Workcamp
  - Central Bali Workcamp

## VERY SHORT TERM VOLUNTEER (VSTV: 5 – 7 DAYS) WORKCAMP S025-2026

DJVSTV-2501

20/04 – 26/04/2025

World Heritage A1

HERTG + EDU + YOUTH

DJVSTV-2503

18/05 – 24/05/2025

World Heritage A2

HERTG + EDU + YOUTH

**Background:** Since 2008 World Heritage Camp has become our remarkable project focusing on heritage site preservation. We recently conduct World Heritage project in Plaosan temple which also belongs to Prambanan temple compounds. Prambanan temple compounds is a UNESCO world heritage site in Indonesia which is one of the largest temple compounds in Southeast Asia. It was built in 9<sup>th</sup> century dedicated to the three great Hindu divinities (Shiva, Wishnu and Brahma). The Prambanan temple compounds consist of Prambanan temple (also called Loro Jonggrang), Sewu temple, Bubrah temple and Lumbung temple with total about 240 temples. The temples were damaged by earthquake in 2006 and volcano ashes from Kelud mountain eruption in 2014. Until then the site management try its best to preserve the temple by restoring the damaged temple and conducting a lot of activities in collaborating with UNESCO, government and stakeholders to support the preservation.

The volunteers will be introduced to the World Heritage Centre's activities and campaign, the history and dynamics of world heritage sites worldwide. It aims at rendering its symbolic dimension to heritage through debates and reflections, contribute to the restoration and preservation of cultural heritage and/or improve accessibility and

availability of information, raise the awareness of the local population and create a sense of "ownership" and identification, and promote cultural heritage between international volunteers and organizations.

**Work:** Volunteers will have restoration work. Besides, before the restoration work, the volunteers will have one day orientation about how to do the restoration and given information about the history of the temple, so that the volunteers really gain a lot of knowledge about the temples and the process of restoration. As the volunteers live in the local community of Bugisan village, they also have activities in the local school with the local students. They will promote to the students how to preserve the temple and do some activities like students competition, culture exchange etc. The volunteers will also give campaign about world heritage preservation to the local community as well as the visitors related to the world heritage especially Prambanan temple compounds.

**Study theme:** The volunteers will be introduced to Prambanan temple compounds and learn about the value of history and culture. They will learn why and how this temple was built long time ago by visiting temples and heritages sites around. In this opportunity the volunteers will also be introduced to the Indonesian culture and customs in general, with a special focus on the Javanese particularities. Some cultural visits are also foreseen.

**Leisure Time:** Visit the nearby world heritage sites and temples of Prambanan and/or Yogyakarta City.

**Volunteer:** The project will be run ONLY if the minimum participants are 5 people; maximum volunteer is 10 people

**Accommodation:** The volunteers will be accommodated in local host family (basic conditions, sleeping bag and mat needed), where they will also receive food. Prefer no vegan (strict vegetarian)

**Location:** Prambanan Temple Compounds, Klaten regency, Central Java province.

**Terminal:** Yogyakarta International Airport (YIA)

**Special Requirement:** The volunteers should accept all the rules and condition of the project. Volunteer is recommended NOT to buy flight ticket at least 30 days before the project start, to avoid the cancellation of the project due to lack of participant. Please contact and confirm again to the organization for last update information. The project will be run ONLY if the minimum participants are 5 people. The volunteer should be open-minded, tolerant, creative, flexible, patient, respect the local customs and local's rule, sharing, special drive for children, willing to accept basic living condition in the project site, and be confidence. Never been found guilty in a criminal case in volunteer's home country or in another country. Strictly prohibited posses narcotics, marijuana, opium, stimulants or other drugs. Flexible vegetarian is still welcomed, BUT prefer NO STRICT vegetarian (vegan) in all projects. Drinking alcohol during the project is completely prohibited. Please accept our apology that we are not open for volunteer with mentally disabilities and people with mobility and movement impairments such as limitation on physical functioning, blindness, deaf, epilepsy, sleep disorders etc.

**Health issues:** Volunteers will easily encounters with tropical humidity, heat, and some tropical insects. Unvaccinated travelers are now permitted to enter Indonesia and travel domestically within the country.

**Participant fee: 280€ or 5.040.000 IDR/participant (fixed rate 1€: 18.000 IDR). It covers food, accommodation, materials and local transport during the project. The fee must be paid in advance via WISE of Dejavato's account maximum 25 days before the project started.**

<b>DJVSTV-2502</b>	<b>20/04 – 26/04/2025</b>	<b>Elephant Conservation A1</b>	<b>ANIMAL + CONSERVATION</b>
<b>DJVSTV-2504</b>	<b>18/05 – 24/05/2024</b>	<b>Elephant Conservation A2</b>	<b>ANIMAL + CONSERVATION</b>

**Background:** Currently the conflict between elephants and human are rising because they have less area to live. Elephants are being squeezed into smaller area, since the local farmer plant the crops and elephants like to destroy and eat them. As a result, the elephants frequently raid and destroy the crops which will cause a conflict between human and elephant. Due to this reason, local government and organization which concerns about the wild life are working together to save or conserve the elephants and reduce the conflict. This project aiming to assist local governmental office named Way Kambas National Park which located in Elephant Conservation Centre to conserve the sanctuary. Our project IS NOT a safari place, but it is mostly as a place for elephant conservation which facing problem of critical decreasing population and threats due to illegal lodging which endanger their life. The PKG is located inside and managed by the *Balai Taman Nasional Way Kambas / BTNWK* (Way Kambas National Park) covering round 1.300 square kilometers in Lampung Province, Southern Sumatera Island. The park consists of swamp forest and lowland rain forest.

There are around 60 elephants with 60 mahouts for each (1 mahout responsible for 1 elephant). All of the elephants in the PKG are chained when they were in the stall during the night. The purpose of putting chain in one of their legs is for monitoring, handle the elephants when they are stress, to distinguish between the PKG's elephants and the wild one. The mahout using special tool called "gancu" (little iron hammer with curve point) to handle the elephant. The

way how to use the *gancu* is by touching gently behind the elephant's ear and sometimes on its head.

**Work:** Volunteer will help local mahout (a person who takes care and train an elephant) daily to take care the elephant starting from bathing/showering, feeding, health checking and grassing the elephant. One local mahout will be accompanied by one volunteer in doing his daily job.

**Study theme:** The volunteers could learn about the animal's life and how local people take care of and handle the conservation.

**Leisure Time:** During free time, the volunteers will have opportunity to enjoy exciting attraction in Lampung such as beach, home industry, traditional market and fruit plantation.

**Volunteer:** The project will be run ONLY if the minimum participants are 6 people; maximum volunteer is 10 people

**Accommodation:** The volunteers will be accommodated in Elephant Conservation Centre / kind of dormitory (basic conditions, sleeping bag and mat needed). Food will be provided with catering service. Also the volunteers will stay at the homestay in the village nearby the conservation center. Prefer no vegan (strict vegetarian)

**Location:** Elephant Conservation Center, Way Kambas National Park, Lampung province, Sumatera Island.

**Terminal:** Raden Inten II Airport (TKG) Lampung.

**Special Requirement:** As the participants will stay and live in the area of PKG and BTNWK, then everybody should be open minded, understand and accept the way of local mahout in taking care of the elephants and MUST follow all the project regulations without any exceptions by signing the agreements. The volunteer accept all the rules and condition of the project which listed on the preliminary information of the workcamp (attached). Volunteer is recommended NOT to buy flight ticket at least 30 days before the project start, to avoid the cancellation of the project due to lack of participant, please contact and confirm again to the organization for last update information. The project will be run ONLY if the minimum participants are 5 people. The volunteer also must signed a agreement document about accepting the condition of the elephant project.

**Health issues:** Volunteers will easily encounters with tropical humidity, heat, and some tropical insects. Unvaccinated travelers are now permitted to enter Indonesia and travel domestically within the country.

**Participant fee:** 460€ or 8.280.000 IDR/participant (fixed rate 1€: 18.000 IDR). It covers food, accommodation, materials and local transport during the project. **The fee must be paid in advance via WISE of Dejavato's account maximum 25 days before the project started.**

**DJVSTV-2505 11/08 – 16/08/2025**

**Central Bali**

**CHILD + CULT + YOUTH**

**Background:** Bali island is one of the best destination for traveler in the world. It is famous with the beautiful nature and beaches and it has special name called the famed island of gods. The population in the whole Bali island is about 4.600.000 inhabitants. The income for people in Bali is mostly from tourism-related business with more than 75% of its economy. The project will take place at Ubud, Gianyar Regency about 25 km away from Denpasar city where the Ngurah Rai International Airport is located. It takes about 2 hours by car due to heavy traffic. Ubud is very popular with the beautiful landscape. It surrounded by rainforest and terraced rice fields which are very famous for the system of water management called Subak which has been recognized by UNESCO World Heritage Centre. There are a lot of tourism places in Ubud such as temple, traditional market, monkey forest, rice field, traditional village, and dense forest. As Ubud is one of the tourist center, it's very important for the local people especially the children to learn about different languages in order to be able to communicate with the international tourists. As in the future they may works in the tourism sectors. It's also very important that the local have better understanding about the importance of volunteering as a way to raise mutual understanding about the people from different background and raising tolerance. The activities during the program will be mostly working at local school (mainly the kindergarten or elementary school) nearby. The children is important assets for the future, by introducing with volunteering activities will open their mind and develop their awareness to other people.

**Work:** Partner of students and teachers to practice conversation in English; teaching English; organizing presentation about culture / country etc in the classroom; learning traditional dance / music; sport activities; cultural exchange activities; small renovation work; playing with the students etc. The volunteer also welcome to propose any ideas to organize certain interactive activities at the school. The volunteers will also involve in other activities like cultural exchange and playing with the kids after the school hour in several extracurricular such as sport, art, scout, music and traditional dance; Learning about how to make traditional offering ceremony; learning how to cook Balinese food. The working hours from 08:00 – 14:00 (about 6 – 7 hours per day)

**Study theme:** The volunteers will be introduced to the Indonesian culture and customs in general, with a special focus on the local culture particularities in Bali. Some cultural visits are also foreseen.



**Leisure Time:** During free time, the volunteers will have the chance to visit the diverse exciting attraction in Ubud and Bali which has been popular all over the world. The volunteers may visit temples, handicraft making center or traditional market.

**Volunteer:** The project will be run **ONLY if the minimum participants are 5 people**; maximum volunteer is 10 people

**Accommodation:** The volunteers will be accommodated in local homestay, where they will also receive food. Flexible vegetarian is still welcomed, BUT prefer NO STRICT vegetarian (vegan) in all projects

**Location:** Ubud district, Gianyar Regency about 25 km away from Denpasar City, the capital of Bali Province

**Terminal:** Ngurah Rai International Airport (DPS) Denpasar Bali.

**Special Requirement:** The volunteers should accept all the rules and condition of the project. Volunteer is recommended NOT to buy flight ticket at least 30 days before the project start, to avoid the cancellation of the project due to lack of participant. Please contact and confirm again to the organization for last update information. The project will be run **ONLY if the minimum participants are 5 people**. The volunteer should be open-minded, tolerant, creative, flexible, patient, respect the local customs and local's rule, sharing, special drive for children, willing to accept basic living condition in the project site, and be confidence. Never been found guilty in a criminal case in volunteer's home country or in another country. Strictly prohibited posses narcotics, marijuana, opium, stimulants or other drugs. Flexible vegetarian is still welcomed, BUT prefer NO STRICT vegetarian (vegan) in all projects. Drinking alcohol during the project is completely prohibited. Please accept our apology that we are not open for volunteer with mentally disabilities and people with mobility and movement impairments such as limitation on physical functioning, blindness, deaf, epilepsy, sleep disorders etc.

**Health issues:** Volunteers will easily encounters with tropical humidity, heat, and some tropical insects. Unvaccinated travelers are now permitted to enter Indonesia and travel domestically within the country.

**Participant fee:** 350€ or 6.300.000 IDR/participant (flat rate 1€: 18.000 IDR). It covers food, accommodation, materials and local transport during the project. **The fee must be paid in advance via WISE of Dejavato's account maximum 25 days before the project started.**

## SHORT TERM INTERNATIONAL (STV: 10 – 12 DAYS) WORKCAMP 2025-2026

DJ-2501	11/08 – 22/08/2025	World Heritage 1	HERTG + EDU + YOUTH
DJ-2505	12/01 – 23/01/2026	World Heritage 2	HERTG + EDU + YOUTH

**Background:** Since 2008 World Heritage Camp has become our remarkable project focusing on heritage site preservation. We recently conduct World Heritage project in Plaosan temple which also belongs to Prambanan temple compounds. Prambanan temple compounds is a UNESCO world heritage site in Indonesia which is one of the largest temple compounds in Southeast Asia. It was built in 9<sup>th</sup> century dedicated to the three great Hindu divinities (Shiva, Wishnu and Brahma). The Prambanan temple compounds consist of Prambanan temple (also called Loro Jonggrang), Sewu temple, Bubrah temple and Lumbung temple with total about 240 temples. The temples were damaged by earthquake in 2006 and volcano ashes from Kelud mountain eruption in 2014. Until then the site management try its best to preserve the temple by restoring the damaged temple and conducting a lot of activities in collaborating with UNESCO, government and stakeholders to support the preservation.

The volunteers will be introduced to the World Heritage Centre's activities and campaign, the history and dynamics of world heritage sites worldwide. It aims at rendering its symbolic dimension to heritage through debates and reflections, contribute to the restoration and preservation of cultural heritage and/or improve accessibility and availability of information, raise the awareness of the local population and create a sense of "ownership " and identification, and promote cultural heritage between international volunteers and organizations.

**Work:** Volunteers will have restoration work. Besides, before the restoration work, the volunteers will have one day orientation about how to do the restoration and given information about the history of the temple, so that the volunteers really gain a lot of knowledge about the temples and the process of restoration. As the volunteers live in the local community of Bugisan village, they also have activities in the local school with the local students. They will promote to the students how to preserve the temple and do some activities like students competition, culture exchange etc. The volunteers will also give campaign about world heritage preservation to the local community as well as the visitors related to the world heritage especially Prambanan temple compounds.



**Study theme:** The volunteers will be introduced to Prambanan temple compounds and learn about the value of history and culture. They will learn why and how this temple was built long time ago by visiting temples and heritages sites around. In this opportunity the volunteers will also be introduced to the Indonesian culture and customs in general, with a special focus on the Javanese particularities. Some cultural visits are also foreseen.

**Leisure Time:** Visit the nearby world heritage sites and temples of Prambanan and/or Yogyakarta City.

**Volunteer:** The project will be run ONLY if the minimum participants are 5 people; maximum volunteer is 10 people

**Accommodation:** The volunteers will be accommodated in local host family (basic conditions, sleeping bag and mat needed), where they will also receive food. Prefer no vegan (strict vegetarian)

**Location:** Prambanan Temple Compounds, Klaten regency, Central Java province.

**Terminal:** Yogyakarta International Airport (YIA)

**Special Requirement:** The volunteers should accept all the rules and condition of the project. Volunteer is recommended NOT to buy flight ticket at least 30 days before the project start, to avoid the cancellation of the project due to lack of participant. Please contact and confirm again to the organization for last update information. The project will be run ONLY if the minimum participants are 5 people. The volunteer should be open-minded, tolerant, creative, flexible, patient, respect the local customs and local's rule, sharing, special drive for children, willing to accept basic living condition in the project site, and be confidence. Never been found guilty in a criminal case in volunteer's home country or in another country. Strictly prohibited posses narcotics, marijuana, opium, stimulants or other drugs. Flexible vegetarian is still welcomed, BUT prefer NO STRICT vegetarian (vegan) in all projects. Drinking alcohol during the project is completely prohibited. Please accept our apology that we are not open for volunteer with mentally disabilities and people with mobility and movement impairments such as limitation on physical functioning, blindness, deaf, epilepsy, sleep disorders etc.

**Health issues:** Volunteers will easily encounters with tropical humidity, heat, and some tropical insects. Unvaccinated travelers are now permitted to enter Indonesia and travel domestically within the country.

**Participant fee: 330€ or 5.940.000 IDR/participant (fixed rate 1€: 18.000 IDR).** It covers food, accommodation, materials and local transport during the project. **The fee must be paid in advance via WISE of Dejavato's account maximum 25 days before the project started.**

#### **DJ-2502 28/07 – 08/08/2025 Bali Special Needs Children**

#### **DISABILITY + EDU + SOC**

**Background:** The project takes place at SLB Negeri 1 Badung in Bali (Bali Badung Disable School). The school is located in Badung Regency close to the city of Denpasar. The SLB Negeri 1 Badung Bali provides basic education services to students with special needs of deaf (*tunarungu*) and mentally disabled (*tunagrahita*). The school has 3 different level from Elementary school /SDLB (age 6 – 12 years old) which has 6 classes, Junior High School / SMPLB (age 13-15 years old) which has 3 classes VII,VIII and IX. The Senior High School / SMALB ( age16 – 18 years old) which has 3 classes X,XI,XII. In total the school has around 230 students assisted by around 50 teachers. In class, students study general subjects such as social studies, science, culture, sport and language. Apart from that, students are also taught advanced skills according to their talents and interests to prepare them for living independently and being ready to compete in society. They learn some life learning skills such as making handicraft, cooking, dance, beauty salon. The project aims are to give sufficient education for disable child, give good quality of education for disabled and give basic skills for them that hopefully will be useful for their future

**Work:** The role of the volunteer will be assisting local teacher in conducting hands on learning activity in order to stimulate children motoric and skill. The volunteer will assist local teacher (shadowing teaching) in the class by conducting some related lesson, supporting students practicing skills, assiting making homework, interaction etc. In this case, the volunteer should be creative in creating activity. Moreover, the presence of volunteers could give them understanding about another culture and country. Intercultural learning in the form of dialogue, music and games could give the student better understanding to learn about another culture from other country; Cleaning the area of the school / dormitory such as cutting grass, cutting the bushes, helping the students cleaning the dormitory, gardening etc

**Study theme:** The volunteers will be introduced to the Indonesian culture and customs in general, with a special focus on the local culture particularities in Bali. Some cultural visits are also foreseen.

**Leisure Time:** During free time, the volunteers will have the chance to visit the diverse exciting attraction in Bali which has been popular all over the world. The volunteers may visit temples, beaches, handicraft making center or traditional market.

**Volunteer:** The project will be run ONLY if the minimum participants are 5 people; maximum volunteer is 10 people

**Accommodation:** The volunteers will be accommodated in students' dormitory (basic conditions, sleeping bag and mat needed), where they will also receive food. Prefer no vegan (strict vegetarian)

**Location:** Disable School of Badung, Badung district Denpasar Bali

**Terminal:** Bali Ngurah Rai International Airport (DPS) Denpasar Bali.

**Special Requirement:** The volunteers should accept all the rules and condition of the project. Volunteer is recommended NOT to buy flight ticket at least 30 days before the project start, to avoid the cancellation of the project due to lack of participant. Please contact and confirm again to the organization for last update information. The project will be run ONLY if the minimum participants are 5 people. The volunteer should be open-minded, tolerant, creative, flexible, patient, respect the local customs and local's rule, sharing, special drive for children, willing to accept basic living condition in the project site, and be confidence. Never been found guilty in a criminal case in volunteer's home country or in another country. Strictly prohibited posses narcotics, marijuana, opium, stimulants or other drugs. Flexible vegetarian is still welcomed, BUT prefer NO STRICT vegetarian (vegan) in all projects. Drinking alcohol during the project is completely prohibited. Please accept our apology that we are not open for volunteer with mentally disabilities and people with mobility and movement impairments such as limitation on physical functioning, blindness, deaf, epilepsy, sleep disorders etc.

**Health issues:** Volunteers will easily encounters with tropical humidity, heat, and some tropical insects. Unvaccinated travelers are now permitted to enter Indonesia and travel domestically within the country.

**Participant fee:** 360€ or 6.480.000 IDR/participant (fixed rate 1€: 18.000 IDR). It covers food, accommodation, materials and local transport during the project. **The fee must be paid in advance via WISE of Dejavato's account maximum 25 days before the project started.**

DJ-2503	11/08 – 22/08/2025	West Bali 1	EDU + CULTURE + YOUTH
DJ-2506	12/01 - 23/01/2026	West Bali 2	EDU + CULTURE + YOUTH

**Background:** Bali Island is popular as the island of gods and very famous with culture and nature attraction. The project takes place in Western Bali area Dejavato which can be reached by car or bus around 4-5 hours from Denpasar, the capital of Bali Province. It is not like in the Central Bali island that put tourism industry as the main income, but in Western Bali has more rice farm and plantation. It has a busy seaport in Gilimanuk as a gateway that connecting Bali and Java island through Bali sea. The workcamp mainly will take place in local school from level of Elementary (age 6 – 12 yo) or Junior High (13 – 15 yo) or Senior High School (16-18 yo). It is not like in the Central Bali which put tourism industry as the main income, in Western Bali they have less tourist and less foreign visitors, the local schools have less opportunity to interact with foreigners. The aim organizing workcamp is to accommodate the need from local students to have opportunity to interact with foreigners and increasing communication ability through various volunteering activities such as practice conversation English or other foreign language. The main goal of this workcamp is to open the mind of the local and have better understanding about different culture.

**Work:** Partner of students and teachers to practice conversation in English; organizing presentation about culture / country etc in the classroom; learning traditional dance / music; sport activities; cultural exchange activities; small renovation work; playing with the students etc. The volunteer also welcome to propose any ideas to organize certain interactive activities at the school. The working hours from 08:00 – 15:00 (about 6 – 7 hours per day)

**Study theme:** The volunteers will be introduced to the Indonesian culture and customs in general, with a special focus on the local culture particularities in Bali. Some cultural visits are also foreseen.

**Leisure Time:** During free time, the volunteers will have the chance to visit the diverse exciting attraction surround the project site. The volunteers may visit beaches, temples or traditional market.

**Volunteer:** The project will be run ONLY if the minimum & maximum participants are 5 people;

**Accommodation:** The volunteers will be accommodated in local host family (basic conditions, sleeping bag and mat needed), where they will also receive food. Prefer no vegan (strict vegetarian)

**Location:** Western Bali (Buleleng & Jembrana Regency), Bali Island about 130 km away from Denpasar City the capital of Bali Province.

**Terminal:** Ngurah Rai International Airport (DPS) Denpasar Bali.

**Special Requirement:** The volunteers should accept all the rules and condition of the project. Volunteer is recommended NOT to buy flight ticket at least 30 days before the project start, to avoid the cancellation of the project due to lack of participant. Please contact and confirm again to the organization for last update information. The project will be run ONLY if the minimum participants are 5 people. The volunteer should be open-minded, tolerant, creative, flexible, patient, respect the local customs and local's rule, sharing, special drive for children, willing to accept basic

living condition in the project site, and be confidence. Never been found guilty in a criminal case in volunteer’s home country or in another country. Strictly prohibited posses narcotics, marijuana, opium, stimulants or other drugs. Flexible vegetarian is still welcomed, BUT prefer NO STRICT vegetarian (vegan) in all projects. Drinking alcohol during the project is completely prohibited. Please accept our apology that we are not open for volunteer with mentally disabilities and people with mobility and movement impairments such as limitation on physical functioning, blindness, deaf, epilepsy, sleep disorders etc.

**Health issues:** Volunteers will easily encounters with tropical humidity, heat, and some tropical insects. Unvaccinated travelers are now permitted to enter Indonesia and travel domestically within the country.

**Participant fee: 350€ or 6.300.000 IDR/participant** (fixed rate 1€: 18.000 IDR). It covers food, accommodation, materials and local transport during the project. **The fee must be paid in advance via WISE of Dejavato’s account maximum 25 days before the project started.**

<b>DJ-2505</b>	<b>11/08 – 20/08/2025</b>	<b>Elephant Conservation</b>	<b>ANIMAL + CONSERVATION</b>
<b>DJ-2507</b>	<b>12/01 – 21/01/2026</b>	<b>Elephant Conservation</b>	<b>ANIMAL + CONSERVATION</b>

**Background:** Currently the conflict between elephants and human are rising because they have less area to live. Elephants are being squeezed into smaller area, since the local farmer plant the crops and elephants like to destroy and eat them. As a result, the elephants frequently raid and destroy the crops which will cause a conflict between human and elephant. Due to this reason, local government and organization which concerns about the wild life are working together to save or conserve the elephants and reduce the conflict. This project aiming to assist local governmental office named Way Kambas National Park which located in Elephant Conservation Centre to conserve the sanctuary. Our project IS NOT a safari place, but it is mostly as a place for elephant conservation which facing problem of critical decreasing population and threats due to illegal lodging which endanger their life. The PKG is located inside and managed by the *Balai Taman Nasional Way Kambas / BTNWK* (Way Kambas National Park) covering round 1.300 square kilometers in Lampung Province, Southern Sumatera Island. The park consists of swamp forest and lowland rain forest.

There are around 60 elephants with 60 mahouts for each (1 mahout responsible for 1 elephant). All of the elephants in the PKG are chained when they were in the stall during the night. The purpose of putting chain in one of their legs is for monitoring, handle the elephants when they are stress, to distinguish between the PKG’s elephants and the wild one. The mahout using special tool called “*gancu*” (little iron hammer with curve point) to handle the elephant. The way how to use the *gancu* is by touching gently behind the elephant’s ear and sometimes on its head.

**Work:** Volunteer will help local mahout (a person who takes care and train an elephant) daily to take care the elephant starting from bathing/showering, feeding, health checking and grassing the elephant. One local mahout will be accompanied by one volunteer in doing his daily job.

**Study theme:** The volunteers could learn about the animal’s life and how local people take care of and handle the conservation.

**Leisure Time:** During free time, the volunteers will have opportunity to enjoy exciting attraction in Lampung such as beach, home industry, traditional market and fruit plantation.

**Volunteer:** The project will be run ONLY if the minimum participants are 6 people; maximum volunteer is 10 people

**Accommodation:** The volunteers will be accommodated in Elephant Conservation Centre / kind of dormitory (basic conditions, sleeping bag and mat needed). Food will be provided with catering service. Also the volunteers will stay at the homestay in the village nearby the conservation center. Prefer no vegan (strict vegetarian)

**Location:** Elephant Conservation Center, Way Kambas National Park, Lampung province, Sumatera Island.

**Terminal:** Raden Inten II Airport (TKG) Lampung.

**Special Requirement:** As the participants will stay and live in the area of PKG and BTNWK, then everybody should be open minded, understand and accept the way of local mahout in taking care of the elephants and MUST follow all the project regulations without any exceptions by signing the agreements. The volunteer accept all the rules and condition of the project which listed on the preliminary information of the workcamp (attached). Volunteer is recommended NOT to buy flight ticket at least 30 days before the project start, to avoid the cancellation of the project due to lack of participant, please contact and confirm again to the organization for last update information. The project will be run ONLY if the minimum participants are 5 people. The volunteer also must signed a agreement document about accepting the condition of the elephant project.

**Health issues:** Volunteers will easily encounters with tropical humidity, heat, and some tropical insects. Unvaccinated travelers are now permitted to enter Indonesia and travel domestically within the country.

**Participant fee: 490€ or 8.820.000 IDR/participant** (fixed rate 1€: 18.000 IDR). It covers food, accommodation, materials and local transport during the project. **The fee must be paid in advance via WISE of Dejavato's account maximum 25 days before the project started.**

## BILATERAL WORKCAMP 2025 - 2026

**DJ-BIL 2501                      WHV Prambanan                      Prambanan Central Java                      HERTG + EDU + YOUTH**

**Background:** Since 2008 World Heritage Camp has become our remarkable project focusing on heritage site preservation. We recently conduct World Heritage project in Plaosan temple which also belongs to Prambanan temple compounds. Prambanan temple compounds is a UNESCO world heritage site in Indonesia which is one of the largest temple compounds in Southeast Asia. It was built in 9<sup>th</sup> century dedicated to the three great Hindu divinities (Shiva, Wishnu and Brahma). The Prambanan temple compounds consist of Prambanan temple (also called Loro Jonggrang), Sewu temple, Bubah temple and Lumbung temple with total about 240 temples. The temples were damaged by earthquake in 2006 and volcano ashes from Kelud mountain eruption in 2014. Until then the site management try its best to preserve the temple by restoring the damaged temple and conducting a lot of activities in collaborating with UNESCO, government and stakeholders to support the preservation.

The volunteers will be introduced to the World Heritage Centre's activities and campaign, the history and dynamics of world heritage sites worldwide. It aims at rendering its symbolic dimension to heritage through debates and reflections, contribute to the restoration and preservation of cultural heritage and/or improve accessibility and availability of information, raise the awareness of the local population and create a sense of "ownership " and identification, and promote cultural heritage between international volunteers and organizations.

**Work:** Volunteers will have restoration work. Besides, before the restoration work, the volunteers will have one day orientation about how to do the restoration and given information about the history of the temple, so that the volunteers really gain a lot of knowledge about the temples and the process of restoration. As the volunteers live in the local community of Bugisan village, they also have activities in the local school with the local students. They will promote to the students how to preserve the temple and do some activities like students competition, culture exchange etc. The volunteers will also give campaign about world heritage preservation to the local community as well as the visitors related to the world heritage especially Prambanan temple compounds.

**Study theme:** The volunteers will be introduced to Prambanan temple compounds and learn about the value of history and culture. They will learn why and how this temple was built long time ago by visiting temples and heritages sites around. In this opportunity the volunteers will also be introduced to the Indonesian culture and customs in general, with a special focus on the Javanese particularities. Some cultural visits are also foreseen.

**Leisure Time:** Visit the nearby world heritage sites and temples of Prambanan and/or Yogyakarta City.

**Volunteer:** The project will be run ONLY if the minimum participants are 5 people; maximum volunteer is 10 people

**Accommodation:** The volunteers will be accommodated in local host family (basic conditions, sleeping bag and mat needed), where they will also receive food. Prefer no vegan (strict vegetarian)

**Location:** Prambanan Temple Compounds, Klaten regency, Central Java province.

**Terminal:** Yogyakarta International Airport (YIA)

**Special Requirement:** The volunteers should accept all the rules and condition of the project. Volunteer is recommended NOT to buy flight ticket at least 30 days before the project start, to avoid the cancellation of the project due to lack of participant. Please contact and confirm again to the organization for last update information. The project will be run ONLY if the minimum participants are 5 people. The volunteer should be open-minded, tolerant, creative, flexible, patient, respect the local customs and local's rule, sharing, special drive for children, willing to accept basic living condition in the project site, and be confidence. Never been found guilty in a criminal case in volunteer's home country or in another country. Strictly prohibited posses narcotics, marijuana, opium, stimulants or other drugs. Flexible vegetarian is still welcomed, BUT prefer NO STRICT vegetarian (vegan) in all projects. Drinking alcohol during the project is completely prohibited. Please accept our apology that we are not open for volunteer with mentally disabilities and people with mobility and movement impairments such as limitation on physical functioning, blindness, deft, epilepsy, sleep disorders etc.

**Health issues:** Volunteers will easily encounters with tropical humidity, heat, and some tropical insects. Unvaccinated

**Participant fee:** to be discussed depend on the duration and number of participant

**DJBIL-2502****West Bali Bilateral Workcamp****EDU + CULTURE + YOUTH**

**Background:** Bali Island is popular as the island of gods and very famous with culture and nature attraction. The project takes place in Western Bali area Dejavato which can be reached by car or bus around 4-5 hours from Denpasar, the capital of Bali Province. It is not like in the Central Bali island that put tourism industry as the main income, but in Western Bali has more rice farm and plantation. It has a busy seaport in Gilimanuk as a gateway that connecting Bali and Java island through Bali sea. The workcamp mainly will take place in local school from level of Elementary (age 6 – 12 yo) or Junior High (13 – 15 yo) or Senior High School (16-18 yo). It is not like in the Central Bali which put tourism industry as the main income, in Western Bali they have less tourist and less foreign visitors, the local schools have less opportunity to interact with foreigners. The aim organizing workcamp is to accommodate the need from local students to have opportunity to interact with foreigners and increasing communication ability through various volunteering activities such as practice conversation English or other foreign language. The main goal of this workcamp is to open the mind of the local and have better understanding about different culture.

**Work:** Partner of students and teachers to practice conversation in English; organizing presentation about culture / country etc in the classroom; learning traditional dance / music; sport activities; cultural exchange activities; small renovation work; playing with the students etc. The volunteer also welcome to propose any ideas to organize certain interactive activities at the school. The working hours from 08:00 – 15:00 (about 6 – 7 hours per day)

**Study theme:** The volunteers will be introduced to the Indonesian culture and customs in general, with a special focus on the local culture particularities in Bali. Some cultural visits are also foreseen.

**Leisure Time:** During free time, the volunteers will have the chance to visit the diverse exciting attraction surround the project site. The volunteers may visit beaches, temples or traditional market.

**Volunteer:** The project will be run ONLY if the minimum & maximum participants are 5 people;

**Accommodation:** The volunteers will be accommodated in local host family (basic conditions, sleeping bag and mat needed), where they will also receive food. Prefer no vegan (strict vegetarian)

**Location:** Western Bali (Buleleng & Jembrana Regency), Bali Island about 130 km away from Denpasar City the capital of Bali Province.

**Terminal:** Ngurah Rai International Airport (DPS) Denpasar Bali.

**Special Requirement:** The volunteers should accept all the rules and condition of the project. Volunteer is recommended NOT to buy flight ticket at least 30 days before the project start, to avoid the cancellation of the project due to lack of participant. Please contact and confirm again to the organization for last update information. The project will be run ONLY if the minimum participants are 5 people. The volunteer should be open-minded, tolerant, creative, flexible, patient, respect the local customs and local's rule, sharing, special drive for children, willing to accept basic living condition in the project site, and be confidence. Never been found guilty in a criminal case in volunteer's home country or in another country. Strictly prohibited posses narcotics, marijuana, opium, stimulants or other drugs. Flexible vegetarian is still welcomed, BUT prefer NO STRICT vegetarian (vegan) in all projects. Drinking alcohol during the project is completely prohibited. Please accept our apology that we are not open for volunteer with mentally disabilities and people with mobility and movement impairments such as limitation on physical functioning, blindness, deaf, epilepsy, sleep disorders etc.

**Health issues:** Volunteers will easily encounters with tropical humidity, heat, and some tropical insects. Unvaccinated travelers are now permitted to enter Indonesia and travel domestically within the country. **Participant fee:** to be discussed depend on the duration and number of volunteer

**DJBIL-2503****Central Bali Bilateral Workcamp****EDU + CULTURE + YOUTH**

**Background:** Bali island is one of the best destination for traveler in the world. It is famous with the beautiful nature and beaches and it has special name called the famed island of gods. The population in the whole Bali island is about 4.600.000 inhabitants. The income for people in Bali is mostly from tourism-related business with more than 75% of its economy. The project will take place at Ubud, Gianyar Regency about 25 km away from Denpasar city where the Ngurah Rai International Airport is located. It takes about 2 hours by car due to heavy traffic. Ubud is very popular with the beautiful landscape. It surrounded by rainforest and terraced rice fields which are very famous for the system of water management called Subak which has been recognized by UNESCO World Heritage Centre. There are a lot of tourism places in Ubud such as temple, traditional market, monkey forest, rice field, traditional village, and dense forest. As Ubud is one of the tourist center, it's very important for the local people especially the children to learn about different languages in order to be able to communicate with the international tourists. As in the future they may works in the tourism sectors. It's also very important that the local have better understanding about the



importance of volunteering as a way to raise mutual understanding about the people from different background and raising tolerance. The activities during the program will be mostly working at local school (mainly the kindergarten or elementary school) nearby. The children is important assets for the future, by introducing with volunteering activities will open their mind and develop their awareness to other people.

**Work:** Partner of students and teachers to practice conversation in English; teaching English; organizing presentation about culture / country etc in the classroom; learning traditional dance / music; sport activities; cultural exchange activities; small renovation work; playing with the students etc. The volunteer also welcome to propose any ideas to organize certain interactive activities at the school. The volunteers will also involve in other activities like cultural exchange and playing with the kids after the school hour in several extracurricular such as sport, art, scout, music and traditional dance; Learning about how to make traditional offering ceremony; learning how to cook Balinese food. The working hours from 08:00 – 14:00 (about 6 – 7 hours per day)

**Study theme:** The volunteers will be introduced to the Indonesian culture and customs in general, with a special focus on the local culture particularities in Bali. Some cultural visits are also foreseen.

**Leisure Time:** During free time, the volunteers will have the chance to visit the diverse exciting attraction in Ubud and Bali which has been popular all over the world. The volunteers may visit temples, handicraft making center or traditional market.

**Volunteer:** The project will be run ONLY if the minimum participants are 5 people; maximum volunteer is 10 people

**Accommodation:** The volunteers will be accommodated in local homestay, where they will also receive food. Flexible vegetarian is still welcomed, BUT prefer NO STRICT vegetarian (vegan) in all projects

**Location:** Ubud district, Gianyar Regency about 25 km away from Denpasar City, the capital of Bali Province

**Terminal:** Ngurah Rai International Airport (DPS) Denpasar Bali.

**Special Requirement:** The volunteers should accept all the rules and condition of the project. Volunteer is recommended NOT to buy flight ticket at least 30 days before the project start, to avoid the cancellation of the project due to lack of participant. Please contact and confirm again to the organization for last update information. The project will be run ONLY if the minimum participants are 5 people. The volunteer should be open-minded, tolerant, creative, flexible, patient, respect the local customs and local's rule, sharing, special drive for children, willing to accept basic living condition in the project site, and be confidence. Never been found guilty in a criminal case in volunteer's home country or in another country. Strictly prohibited posses narcotics, marijuana, opium, stimulants or other drugs. Flexible vegetarian is still welcomed, BUT prefer NO STRICT vegetarian (vegan) in all projects. Drinking alcohol during the project is completely prohibited. Please accept our apology that we are not open for volunteer with mentally disabilities and people with mobility and movement impairments such as limitation on physical functioning, blindness, deft, epilepsy, sleep disorders etc.

**Health issues:** Volunteers will easily encounters with tropical humidity, heat, and some tropical insects. Unvaccinated travelers are now permitted to enter Indonesia and travel domestically within the country

**Participant fee:** to be discussed depend on the duration and number of volunteer

#### DJBIL-2504

#### Elephant Conservation

#### ANIMAL + CONSERVATION

**Background:** Currently the conflict between elephants and human are rising because they have less area to live. Elephants are being squeezed into smaller area, since the local farmer plant the crops and elephants like to destroy and eat them. As a result, the elephants frequently raid and destroy the crops which will cause a conflict between human and elephant. Due to this reason, local government and organization which concerns about the wild life are working together to save or conserve the elephants and reduce the conflict. This project aiming to assist local governmental office named Way Kambas National Park which located in Elephant Conservation Centre to conserve the sanctuary. Our project IS NOT a safari place, but it is mostly as a place for elephant conservation which facing problem of critical decreasing population and threats due to illegal lodging which endanger their life. The PKG is located inside and managed by the *Balai Taman Nasional Way Kambas / BTNWK* (Way Kambas National Park) covering round 1.300 square kilometers in Lampung Province, Southern Sumatera Island. The park consists of swamp forest and lowland rain forest.

There are around 60 elephants with 60 mahouts for each (1 mahout responsible for 1 elephant). All of the elephants in the PKG are chained when they were in the stall during the night. The purpose of putting chain in one of their legs is for monitoring, handle the elephants when they are stress, to distinguish between the PKG's elephants and the wild one. The mahout using special tool called "gancu" (little iron hammer with curve point) to handle the elephant. The way how to use the *gancu* is by touching gently behind the elephant's ear and sometimes on its head.

**Work:** Volunteer will help local mahout (a person who takes care and train an elephant) daily to take care the elephant starting from bathing/showering, feeding, health checking and grassing the elephant. One local mahout will be accompanied by one volunteer in doing his daily job.

**Study theme:** The volunteers could learn about the animal's life and how local people take care of and handle the conservation.

**Leisure Time:** During free time, the volunteers will have opportunity to enjoy exciting attraction in Lampung such as beach, home industry, traditional market and fruit plantation.

**Volunteer:** The project will be run ONLY if the minimum participants are 6 people; maximum volunteer is 10 people

**Accommodation:** The volunteers will be accommodated in Elephant Conservation Centre / kind of dormitory (basic conditions, sleeping bag and mat needed). Food will be provided with catering service. Also the volunteers will stay at the homestay in the village nearby the conservation center. Prefer no vegan (strict vegetarian)

**Location:** Elephant Conservation Center, Way Kambas National Park, Lampung province, Sumatera Island.

**Terminal:** Raden Inten II Airport (TKG) Lampung.

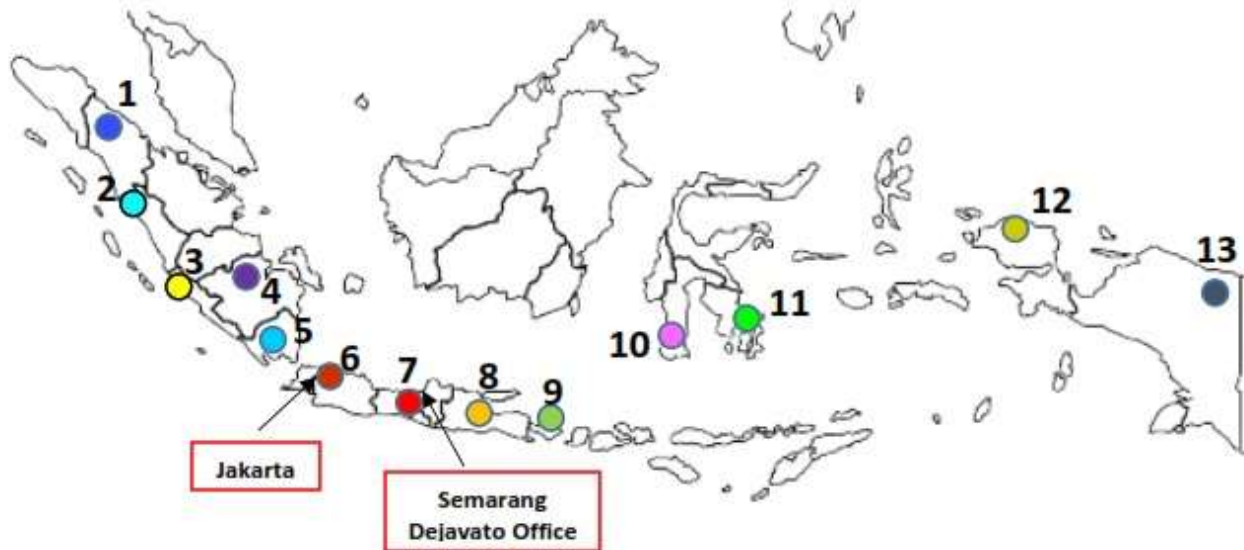
**Special Requirement:** As the participants will stay and live in the area of PKG and BTNWK, then everybody should be open minded, understand and accept the way of local mahout in taking care of the elephants and MUST follow all the project regulations without any exceptions by signing the agreements. The volunteer accept all the rules and condition of the project which listed on the preliminary information of the workcamp (attached). Volunteer is recommended NOT to buy flight ticket at least 30 days before the project start, to avoid the cancellation of the project due to lack of participant, please contact and confirm again to the organization for last update information. The project will be run ONLY if the minimum participants are 5 people. The volunteer also must signed a agreement document about accepting the condition of the elephant project.

**Health issues:** Volunteers will easily encounters with tropical humidity, heat, and some tropical insects. Unvaccinated travelers are now permitted to enter Indonesia and travel domestically within the country.

**Participant fee:** to be discussed depend on the duration and number of volunteer

### 3.2. Mid Term Volunteer (MTV) Projects

## INDONESIA: MLTV/STePs Projects



#### Project Locations

No	Province	Type of Projects	Host Projects
1	North Sumatera	MLTV / STePs	University, Polytechnic, Special Needs
2	West Sumatera	MLTV / STePs	University, Polytechnic
3	Bengkulu	MLTV / STePs	University
4	Palembang	MLTV / STePs	University, Polytechnic
5	Lampung	MLTV / STePs	National Park of Elephants, Children Project (Only available for short term)
6	Jakarta	MLTV / STePs	University
7	Central Java	MLTV / STePs	University, Polytechnic, Children, Primary, High Education, Nursing Homes, Babies & Teenager Orphanage, Underprivileged, Special Need, Community Development, Internship, Pesantren Project
8	East Java	MLTV / STePs	University, Polytechnic, Special Needs
9	Bali	MLTV / STePs	Special Needs, Babies & Children Orphanage
10	South Sulawesi	MLTV / STePs	University, Polytechnic
11	South East Sulawesi	MLTV / STePs	University, Polytechnic
12	West Papua	MLTV / STePs	Polytechnic
13	Papua	MLTV / STePs	Polytechnic

**DJMTV – 2501      JAN - DEC 2025      CHILDREN PROJECT      EDU/CHILD      1 VOL**

**Background:** Kindergarten is early childhood formal education level (under 6 years old). Kindergarten curriculum is focused on the provision of educational stimulation to assist the growth and development of mind and body so that the children are ready to enter further educational level.

In Indonesia, Kindergarten start to be compulsory of early educational level as requirement of entering elementary school. Kindergarten school is divided into two groups. Group A and B. This grouping system is based on the age of students. Kindergarten is hosted students from 4 to 6 years old. The lessons are led to improve the children's and raise their interest to learn knowledge through variety approaches such as tact value, social, religious, emotion,



physical, motoric, cognitive, language, art and independence. All are developed in order to develop their intellectual and role in society.

**Work:** Supervising the children during school hours; Assisting local teachers in conducting the class; Organizing class activities together with local teachers; Introduction of Basic English to the children through interactive learning; Introduction volunteers culture through games, music, dance, or else.

School hours are between 7:00 to 11:00 from Monday to Saturday

**Study Theme:** The volunteers will be introduced to the Indonesian culture and customs in general, with a special focus on the local particularities. Some cultural visits are also foreseen.

**Leisure Time:** During free time, the volunteers will have the chance to visit tourism places nearby project sites.

**Accommodation:** The accommodation and food will be provided by a local host family or at dormitory (to be confirmed). The volunteer may have own or sharing room and the other facilities with other host family members. Facilities are simple and Indonesian style (no hot water, no washing machine).

**Location:** Java island

**Terminal of arrival:** The meeting point for all volunteer MUST BE at Semarang city at Semarang International Airport or Semarang Tawang Train Station. Volunteer is NOT ALLOWED to buy flight ticket before getting the visa and get confirmation from the host organization.

**Special Requirements:** Hold a Visit Single Entry Visa for Volunteering type C-6 / B211A; All additional regulation and mitigation that might be change anytime depends on the situation in Indonesia; No piercing on face, no visible tattoo, should have common hair style (no colorful, dreadlock). The volunteer should be open-minded, tolerant, creative, flexible, patient, respect the local customs and local's rule, sharing, special drive for children, willing to accept basic living condition in the project site, and be confidence. Never been found guilty in a criminal case in volunteer's home country or in another country. Strictly prohibited possess narcotics, marijuana, opium, stimulants or other drugs. Flexible vegetarian is still welcomed, BUT prefer NO STRICT vegetarian (vegan) in all projects. Please accept our apology that we are not open for volunteer with mentally disabilities and people with mobility and movement impairments such as limitation on physical functioning, blindness, deaf, epilepsy, sleep disorders etc.

**Health issues:** Unvaccinated travelers are now permitted to enter Indonesia and travel domestically within the country.

**Participant Fee:** 370 € or IDR 6.660.000/month (additional cost per week 70 Euro/week/person or IDR 1.260.000). The payment should be paid in advance maximum 1 month (30 days) before the project started via online transfer through WISE Online transfer. The volunteer MUST transfer the money in RUPIAH currency

**DJMTV – 2502**

**JAN – DEC 25**

**PRIMARY EDU.**

**EDU/CHILD**

**1 VOL**

**Background:** The volunteers will be placed in elementary schools (students age 6 – 12 years old). There are various aims of this project such as, to assist local staffs & motivating the local students to make effort in life and motivated them in having passion in life; to stimulate intercultural learning; to prepare the students of elementary school (age 6 – 12 yo) for the higher level of education. The activities that will be done among others, preparing the students for the higher level of education; teaching and learning activities; doing sports, art and music activities; and developing self-interest of the students.

**Work:** Supervising the children during school hours; Assisting local teachers in conducting the class; Organizing class activities together with local teachers; Introduction of Basic English to the children through interactive learning; Introduction volunteers culture through games, music, dance, or else.

**Study Theme:** The volunteers will be introduced to the Indonesian culture and customs in general, with a special focus on the local particularities. Some cultural visits are also foreseen.

**Leisure Time:** During free time, the volunteers will have the chance to visit tourism places nearby project sites such as Chinese town, temples, and beaches.

**Accommodation:** The accommodation and food will be provided by a local host family or at dormitory (to be confirmed). The volunteer may have own or sharing room and the other facilities with other host family members. Facilities are simple and Indonesian style (no hot water, no washing machine).

**Location:** Java island

**Terminal of arrival:** The meeting point for all volunteer MUST BE at Semarang city at Semarang International Airport or Semarang Tawang Train Station. Volunteer is NOT ALLOWED to buy flight ticket before getting the visa and get confirmation from the host organization.

**Special Requirements:** Hold a Visit Single Entry Visa for Volunteering type C-6 / B211A; All additional regulation and mitigation that might be change anytime depends on the situation in Indonesia; No piercing on face, no visible tattoo,

should have common hair style (no colorful, dreadlock). The volunteer should be open-minded, tolerant, creative, flexible, patient, respect the local customs and local's rule, sharing, special drive for children, willing to accept basic living condition in the project site, and be confidence. Never been found guilty in a criminal case in volunteer's home country or in another country. Strictly prohibited possess narcotics, marijuana, opium, stimulants or other drugs. Flexible vegetarian is still welcomed, BUT prefer NO STRICT vegetarian (vegan) in all projects. Please accept our apology that we are not open for volunteer with mentally disabilities and people with mobility and movement impairments such as limitation on physical functioning, blindness, deaf, epilepsy, sleep disorders etc.

**Health issues:** Unvaccinated travelers are now permitted to enter Indonesia and travel domestically within the country.

**Participant Fee:** 370 € or IDR 6.660.000/month (additional cost per week 70 Euro/week/person or IDR 1.260.000). The payment should be paid in advance maximum 1 month (30 days) before the project started via online transfer through WISE Online transfer. The volunteer MUST transfer the money in RUPIAH currency

#### **DJMTV – 2503**

**JAN - DEC 2025**

**HIGH EDUCATION**

**EDU/TEEN**

**1 VOL**

**Background:** The aims of the activities are to promote formal education and learning, to assist local teacher & teaching English to the students, and to stimulate intercultural learning. The high Education project is hosted student from 13 – 17 years old. It involves private schools foundation and governmental school. The activities that will be done among others, formal and non-formal English teaching; entertainment activities for students; education; interaction with students. Moreover High School Education is divided into two educational services, secondary and senior high school. Those schools are implementing the curriculum standard national as their compulsory activities. Therefore, the students learn compulsory lesson such as Math, science, social, language, religious, physic and etc. In senior high school, the students are given more various program such as science, social or language class. The minimum educational access, learning method and human resource initiate them in collaborating International Voluntary Service activities to support their language program especially. Moreover, it provides extra activities in order to search and find student's interest such as music, art, sport and technology.

**Work:** Intercultural activities through game, music, presentation, discussion and else; Assisting local teachers in conducting the class; Organizing class activities together with local teachers; Introduction of Basic English to the children through interactive learning; Introduction volunteers culture through games, music, dance, or else. Motivating the students actively using their English through interactive learning with volunteers;.

**Study Theme:** The volunteers will be introduced to the Indonesian culture and customs in general, with a special focus on the local particularities. Some cultural visits are also foreseen.

**Leisure Time:** During free time, the volunteers will have the chance to visit tourism places nearby project sites.

**Accommodation:** The accommodation and food will be provided by a local host family or at dormitory(to be confirmed). The volunteer may have own or sharing room and the other facilities with other host family members. Facilities are simple and Indonesian style (no hot water, no washing machine).

**Location:** Java island

**Terminal of arrival:** The meeting point for all volunteer MUST BE at Semarang city at Semarang International Airport or Semarang Tawang Train Station. Volunteer is NOT ALLOWED to buy flight ticket before getting the visa and get confirmation from the host organization.

**Special Requirements:** Hold a Visit Single Entry Visa for Volunteering type C-6 / B211A; All additional regulation and mitigation that might be change anytime depends on the situation in Indonesia; No piercing on face, no visible tattoo, should have common hair style (no colorful, dreadlock). The volunteer should be open-minded, tolerant, creative, flexible, patient, respect the local customs and local's rule, sharing, special drive for children, willing to accept basic living condition in the project site, and be confidence. Never been found guilty in a criminal case in volunteer's home country or in another country. Strictly prohibited possess narcotics, marijuana, opium, stimulants or other drugs. Flexible vegetarian is still welcomed, BUT prefer NO STRICT vegetarian (vegan) in all projects. Please accept our apology that we are not open for volunteer with mentally disabilities and people with mobility and movement impairments such as limitation on physical functioning, blindness, deaf, epilepsy, sleep disorders etc.

**Health issues:** Unvaccinated travelers are now permitted to enter Indonesia and travel domestically within the country.

**Participant Fee:** 370 € or IDR 6.660.000/month (additional cost per week 70 Euro/week/person or IDR 1.260.000) The payment should be paid in advance maximum 1 month (30 days) before the project started via online transfer through WISE Online transfer. The volunteer MUST transfer the money in RUPIAH currency

**DJMTV – 2504                      JAN - DEC 2025   UNIVERSITY PROJECT                      EDU/YOUTH/ADULT                      1 VOL**

**Background:** University project is combination between some universities in Indonesia. The presences of the volunteers are appreciated by the university community in order to motivate the university students in actively using their foreign language. Furthermore, interaction between the students and volunteer can enhance their cultural knowledge and experience. This volunteering program at university are driving internationalization and offers prioritized support for university reforms that lead the internationalization of Indonesian society. Volunteering brings to our society, personal development and wellbeing. The program is committed to growing and supporting a vibrant volunteering community both by providing and promoting volunteer opportunities through activities at university. By doing volunteering at university, the volunteer will have chance to exchange culture and knowledge with the young people and gives students more opportunities to devote their love to the society and make contribution to the best of their ability

**Work:** Intercultural activities through game, music, presentation, discussion and else; Assisting local teachers in conducting the class; Organizing class activities together with local teachers;; Introduction volunteers culture through games, music, dance, or else. Motivating the students actively using their English through interactive learning with volunteers through organizing non formal activities.

**Study Theme:** The volunteers will be introduced to the Indonesian culture and customs in general, with a special focus on the local particularities. Some cultural visits are also foreseen.

**Leisure Time:** During free time, the volunteers will have the chance to visit tourism places nearby project sites.

**Accommodation:** The accommodation and food will be provided by a local host family or at dormitory (to be confirmed). The volunteer may have own or sharing room and the other facilities with other host family members. Facilities are simple and Indonesian style (no hot water, no washing machine).

**Location:** Java Island

**Terminal of arrival:** The meeting point for all volunteer MUST BE at Semarang city at Semarang International Airport or Semarang Tawang Train Station. Volunteer is NOT ALLOWED to buy flight ticket before getting the visa and get confirmation from the host organization.

**Special Requirements:** Hold a Visit Single Entry Visa for Volunteering type C-6 / B211A; All additional regulation and mitigation that might be change anytime depends on the situation in Indonesia; No piercing on face, no visible tattoo, should have common hair style (no colorful, dreadlock). The volunteer should be open-minded, tolerant, creative, flexible, patient, respect the local customs and local's rule, sharing, special drive for children, willing to accept basic living condition in the project site, and be confidence. Never been found guilty in a criminal case in volunteer's home country or in another country. Strictly prohibited possesss narcotics, marijuana, opium, stimulants or other drugs. Flexible vegetarian is still welcomed, BUT prefer NO STRICT vegetarian (vegan) in all projects. Please accept our apology that we are not open for volunteer with mentally disabilities and people with mobility and movement impairments such as limitation on physical functioning, blindness, deft, epilepsy, sleep disorders etc.

**Health issues:** Unvaccinated travelers are now permitted to enter Indonesia and travel domestically within the country.

**Participant Fee:** 370 € or IDR 6.660.000/month (additional cost per week 70 Euro/week/person or IDR 1.260.000) The payment should be paid in advance maximum 1 month (30 days) before the project started via online transfer through WISE Online transfer. The volunteer MUST transfer the money in RUPIAH currency

**DJMTV – 2505                      JAN – DEC 25                      PESANTREN PROJECT                      EDU/CULT                      1 VOL**

**Background:** Pesantren or Pondok Pesantrens are Islamic boarding schools in Indonesia. The pesantren education system originated from traditional Javanese dormitories to learn religious philosophies. Pesantren have played a major role over the centuries. They emphasise cores values of sincerity, simplicity, individual autonomy, solidarity and self-control. Young men and women are separated from their families, which contributes to a sense of individual commitment to the faith and close bonding to a teacher. Most of pesantren provide to Indonesian citizens dormitory living at low or no cost for the students. The students start activities early morning prayer then ended the evening with a study group in the dormitory. During the day, the students attend formal school like any other students outside of pesantren (science, sport, English etc). In the late afternoon and evening they have to attend religious studies. The pesantren has possible components such as traditional religious education, vocational skills training and character development. The main activities incudes formal and non-formal English conversation activities; interactive learning activities with students, education, and to get better understanding about Islam. The level of pesantren started from elementary / Madrasah Ibtidaiyah (MI) age 6 – 12 yo, junior high / Madrasah Tsanawiyah (MTs) age 12-15 yo, senior high / Madrasah Aliyah (MA) and vocational high school / SMK age 16 – 18 yo).

**Work:** Intercultural activities through game, music, presentation, discussion and else; Assisting local teachers in conducting the class; Organizing class activities together with local teachers;; Introduction volunteers culture through games, music, dance, or else. Motivating the students actively using their English through interactive learning with volunteers through organizing non formal activities.

**Study Theme:** The volunteers will be introduced to the Indonesian culture and customs in general, with a special focus on the local particularities. Some cultural visits are also foreseen.

**Leisure Time:** During free time, the volunteers will have the chance to visit tourism places nearby project sites.

**Accommodation:** The accommodation and food will be provided by a local host family or at dormitory or host family (to be confirmed). The volunteer may have own or sharing room and the other facilities with other host member. Facilities are simple and Indonesian style (no hot water, no washing machine).

**Location:** Central Java

**Terminal of arrival:** The meeting point for all volunteer MUST BE at Semarang city at Semarang International Airport or Semarang Tawang Train Station. Volunteer is NOT ALLOWED to buy flight ticket before getting the visa and get confirmation from the host organization.

**Special Requirements:** Hold a Visit Single Entry Visa for Volunteering type C-6 / B211A; All additional regulation and mitigation that might be change anytime depends on the situation in Indonesia; No piercing on face, no visible tattoo, should have common hair style (no colorful, dreadlock). The volunteer should be open-minded, tolerant, creative, flexible, patient, respect the local customs and local's rule, sharing, special drive for children, willing to accept basic living condition in the project site, and be confidence. Never been found guilty in a criminal case in volunteer's home country or in another country. Strictly prohibited possess narcotics, marijuana, opium, stimulants or other drugs. Flexible vegetarian is still welcomed, BUT prefer NO STRICT vegetarian (vegan) in all projects. Please accept our apology that we are not open for volunteer with mentally disabilities and people with mobility and movement impairments such as limitation on physical functioning, blindness, deaf, epilepsy, sleep disorders etc.

**Health issues:** Unvaccinated travelers are now permitted to enter Indonesia and travel domestically within the country.

**Participant Fee:** 370 € or IDR 6.660.000/month (additional cost per week 70 Euro/week/person or IDR 1.260.000). The payment should be paid in advance maximum 1 month (30 days) before the project started via online transfer through WISE Online transfer. The volunteer MUST transfer the money in RUPIAH currency

#### **DJMTV – 2506 JAN - DEC 2025 UNDERPRIVILEGED PROJECT POVERTY/EDU/KIDS VOL 1**

**Background:** The project site at Marsudi Utami Kindergarten & Elementary School. They are private non-profit kindergarten & elementary school under the Catholic Foundation. The kindergarten has around 35 students age 3 – 6 years old assisted by 3 teachers. While at elementary school has around 180 students from grade I to VI age 6 – 12 years old and assisted by 10 teachers and staffs. The project are located in crowded, poor area in Semarang suburb on the river side of Banjir Kanal Barat which always deals with river flood every year. The school serves the children from the local community and helps the underprivileged families who cannot afford to send their children to school. The main income of the villagers are from various sectors such working in factories, collecting stones or sands from river, scavengers (garbage pickers). In the schools, there are extra activities for students such as making compost, making handicraft / souvenir and cooking lesson. Then the students sell the stuffs to the churches, local community, and teachers from other schools etc.

**Work:** To organize learning basic English by doing games and entertaining activities for children; To organize sport activities; create other activities that will enrich the skill of the kids ; Helping in extra activities such as cooking, making compost etc; To share time with the children, provide them entertainments; Teaching them about health and hygiene, art, music, mathematics, dance, computer science and English; To assist local staffs & motivating the local children in the slum area to make effort in life and motivated them in having passion in life; To stimulate intercultural learning ; Better understanding about life under economics difficulties.

**Study theme:** The volunteers will be introduced to the Indonesian culture and customs in general, with a special focus on the local particularities. Some cultural visits are also foreseen.

**Leisure Time:** During free time, the volunteers will have the chance to visit Semarang city, Sampo Poo Kong Chinese Temple, Lawang Sewu Building and Gedong Songo Hindus Temples.

**Accommodation:** The accommodation and food will be provided by a local host family or dormitory (to be confirmed). The volunteer may have own or sharing room and the other facilities with other host member. Facilities are simple and Indonesian style (no hot water, no washing machine).

**Location:** Java Island

**Terminal of arrival:** The meeting point for all volunteer MUST BE at Semarang city at Semarang International Airport or Semarang Tawang Train Station. Volunteer is NOT ALLOWED to buy flight ticket before getting the visa and get confirmation from the host organization.

**Special Requirements:** Hold a Visit Single Entry Visa for Volunteering type C-6 / B211A; All additional regulation and mitigation that might be change anytime depends on the situation in Indonesia; No piercing on face, no visible tattoo, should have common hair style (no colorful, dreadlock). The volunteer should be open-minded, tolerant, creative, flexible, patient, respect the local customs and local's rule, sharing, special drive for children, willing to accept basic living condition in the project site, and be confidence. Never been found guilty in a criminal case in volunteer's home country or in another country. Strictly prohibited possess narcotics, marijuana, opium, stimulants or other drugs. Flexible vegetarian is still welcomed, BUT prefer NO STRICT vegetarian (vegan) in all projects. Please accept our apology that we are not open for volunteer with mentally disabilities and people with mobility and movement impairments such as limitation on physical functioning, blindness, deft, epilepsy, sleep disorders etc.

**Health issues:** Unvaccinated travelers are now permitted to enter Indonesia and travel domestically within the country.

**Participant Fee:** 370 € or IDR 6.660.000/month (additional cost per week 70 Euro/week/person or IDR 1.260.000). The payment should be paid in advance maximum 1 month (30 days) before the project started via online transfer through WISE Online transfer. The volunteer MUST transfer the money in RUPIAH currency

#### **DJMTV – 2507 JAN - DEC 2025 NURSING HOMES (ELDERLY) ELDERLY 1 VOL**

**Background:** Rindang Asih 1 Elderly is one of elderly in Ungaran under the coordination by Soegijapranata Pastoral Semarang. This nursing home is located in Ungaran around 20 km away from Semarang city where Dejavato's office is located and which lies on the slope of Ungaran Mountain, so the climate is cooler. In Rindang Asih 1 elderly, there are 29 women elderly who lives there which helps by some local staffs. There are 3 types of the elderly; Type A to Type C. Type A is those who can do working like the normal one. While Type B is those who can do some work in the nursing homes. And Type C is those who cannot do anything just lying on the bed or the wheel chair so they need help to do anything. There are 29 elderly and all of them are ladies.

**Work:** To organize and assist local staffs daily task such as cleaning, feeding etc; Cutting hair & nails of the ladies; Teaching writing calligraphy; To contribute to the organization of non-formal workshops; To organize activities that will entertain the elderly; To get involve in various project's activities; Assisting the local staffs trough showering, giving food, preparing food and cooking for the elderly.

**Study theme:** The volunteers will be introduced to the Indonesian culture and customs in general, with a special focus on the local particularities. Some cultural visits are also foreseen.

**Leisure Time:** During free time, the volunteers will have the chance to visit the interesting places near the site

**Accommodation:** The accommodation and food will be provided by a local host family or dormitory (to be confirmed). The volunteer may have own or sharing room and the other facilities with other host member. Facilities are simple and Indonesian style (no hot water, no washing machine).

**Location:** Java Island

**Terminal of arrival:** The meeting point for all volunteer MUST BE at Semarang city at Semarang International Airport or Semarang Tawang Train Station. Volunteer is NOT ALLOWED to buy flight ticket before getting the visa and get confirmation from the host organization.

**Special Requirements:** Hold a Visit Single Entry Visa for Volunteering type C-6 / B211A; All additional regulation and mitigation that might be change anytime depends on the situation in Indonesia; No piercing on face, no visible tattoo, should have common hair style (no colorful, dreadlock). The volunteer should be open-minded, tolerant, creative, flexible, patient, respect the local customs and local's rule, sharing, special drive for children, willing to accept basic living condition in the project site, and be confidence. Never been found guilty in a criminal case in volunteer's home country or in another country. Strictly prohibited possess narcotics, marijuana, opium, stimulants or other drugs. Flexible vegetarian is still welcomed, BUT prefer NO STRICT vegetarian (vegan) in all projects. Please accept our apology that we are not open for volunteer with mentally disabilities and people with mobility and movement impairments such as limitation on physical functioning, blindness, deft, epilepsy, sleep disorders etc.

**Health issues:** Unvaccinated travelers are now permitted to enter Indonesia and travel domestically within the country.

**Participant Fee:** 370 € or IDR 6.660.000/month (additional cost per week 70 Euro/week/person or IDR 1.260.000). The payment should be paid in advance maximum 1 month (30 days) before the project started via online transfer through WISE Online transfer. The volunteer MUST transfer the money in RUPIAH currency



**DJMTV – 2508      JAN – DEC 25      SPECIAL NEEDS CHILDREN IN JAVA      DISS/CHILD      1 VOL**

**Background:** The projects options such Yogasmara Autism Foundation in Semarang. Local staffs provides care to the special needs students aged between 5 and 17years of age. Education classes start as early as kindergarten up to junior high-school. It also provides vocational training, sport, motorist activities, drawing, making handicrafts, dance etc. Some local volunteers also do several regular activities with the school like doing sports, play with the kids, and teaching how to make some simple handicrafts. The project aims are to give sufficient education for disable child, give good quality of education for disabled and give basic skills for them that hopefully will be useful for their future.

**Work:** The role of the volunteer will be assisting local teacher in conducting hands on learning activity in order to stimulate children motoric. In this case, the volunteer should be creative in creating activity. Moreover, the presence of volunteers could give them understanding about another culture and country. Intercultural learning in the form of dialogue, music and games could give the student better understanding to learn about another culture from other country.

**Study theme:** The volunteers will be introduced to the Indonesian culture and customs in general, with a special focus on the Javanese particularities. Some cultural visits are also foreseen.

**Leisure Time:** During free time, the volunteers will have the chance to visit Semarang city, Samp Poo Kong Chinese Temple, Lawang Sewu Building and Gedong Songo Hindus Temples.

**Accommodation:** The accommodation and food will be provided by a local host family or dormitory (to be confirmed). The volunteer may have own or sharing room and the other facilities with other host member. Facilities are simple and Indonesian style (no hot water, no washing machine).

**Location:** Ungaran Regency, Central Java

**Terminal of arrival:** The meeting point for all volunteer MUST BE at Semarang city at Semarang International Airport or Semarang Tawang Train Station. Volunteer is NOT ALLOWED to buy flight ticket before getting the visa and get confirmation from the host organization.

**Special Requirements:** Hold a Visit Single Entry Visa for Volunteering type C-6 / B211A; No piercing on face, no visible tattoo, should have common hair style (no colorful, dreadlock). The volunteer should be open-minded, tolerant, creative, flexible, patient, respect the local customs and local's rule, sharing, special drive for children, willing to accept basic living condition in the project site, and be confidence. Never been found guilty in a criminal case in volunteer's home country or in another country. Strictly prohibited possesss narcotics, marijuana, opium, stimulants or other drugs. Flexible vegetarian is still welcomed, BUT prefer NO STRICT vegetarian (vegan) in all projects. Please accept our apology that we are not open for volunteer with mentally disabilities and people with mobility and movement impairments such as limitation on physical functioning, blindness, deft, epilepsy, sleep disorders etc.

**Health issues:** Unvaccinated travelers are now permitted to enter Indonesia and travel domestically within the country.

**Participant Fee:** 370 € or IDR 6.660.000/month (additional cost per week 70 Euro/week/person or IDR 1.260.000). The payment should be paid in advance maximum 1 month (30 days) before the project started via online transfer through WISE Online transfer. The volunteer MUST transfer the money in RUPIAH currency

**DJMTV – 2509      JAN – DEC 25      SPECIAL NEEDS CHILDREN IN BALI      DISS/CHILD      1 VOL**

**Background:** The project takes place at SLB Negeri 1 Badung in Bali (Bali Badung Disable School). The school is located in Badung Regency close to the city of Denpasar. The SLB Negeri 1 Badung Bali provides basic education services to students with special needs of deaf (*tunarungu*) and mentally disabled (*tunagrahita*). The school has 3 different level from Elementary school /SDLB (age 6 – 12 years old) which has 6 classes, Junior High School / SMPLB (age 13-15 years old) which has 3 classes VII,VIII and IX. The Senior High School / SMALB ( age16 – 18 years old) which has 3 classes X,XI,XII. In total the school has around 230 students assisted by around 50 teachers. In class, students study general subjects such as social studies, science, culture, sport and language. Apart from that, students are also taught advanced skills according to their talents and interests to prepare them for living independently and being ready to compete in society. They learn some life learning skills such as making handicraft, cooking, dance, beauty salon. The project aims are to give sufficient education for disable child, give good quality of education for disabled and give basic skills for them that hopefully will be useful for their future.

**Work:** The role of the volunteer will be assisting local teacher in conducting hands on learning activity in order to stimulate children motoric and skill. The volunteer will assist local teacher (shadowing teaching) in the class by conducting some related lesson, supporting students practicing skills, assisting making homework, interaction etc. In this case, the volunteer should be creative in creating activity. Moreover, the presence of volunteers could give

them understanding about another culture and country. Intercultural learning in the form of dialogue, music and games could give the student better understanding to learn about another culture from other country.

**Study theme:** The volunteers will be introduced to the Indonesian culture and customs in general, with a special focus on the Javanese particularities. Some cultural visits are also foreseen.

**Leisure Time:** During free time, the volunteers will have the chance to visit the tourism places near the project.

**Accommodation:** The accommodation and food will be provided by a local dormitory (to be confirmed). The volunteer may have own or sharing room and the other facilities with other host member. Facilities are simple and Indonesian style (no hot water, no washing machine).

**Location:** Denpasar, Bali Island

**Terminal of arrival:** The meeting point for all volunteer MUST BE at Semarang city at Semarang International Airport or Semarang Tawang Train Station. Volunteer is NOT ALLOWED to buy flight ticket before getting the visa and get confirmation from the host organization.

**Special Requirements:** Hold a Visit Single Entry Visa for Volunteering type C-6 / B211A; No piercing on face, no visible tattoo, should have common hair style (no colorful, dreadlock). The volunteer should be open-minded, tolerant, creative, flexible, patient, respect the local customs and local's rule, sharing, special drive for children, willing to accept basic living condition in the project site, and be confidence. Never been found guilty in a criminal case in volunteer's home country or in another country. Strictly prohibited possess narcotics, marijuana, opium, stimulants or other drugs. Flexible vegetarian is still welcomed, BUT prefer NO STRICT vegetarian (vegan) in all projects. Please accept our apology that we are not open for volunteer with mentally disabilities and people with mobility and movement impairments such as limitation on physical functioning, blindness, deaf, epilepsy, sleep disorders etc.

**Health issues:** Unvaccinated travelers are now permitted to enter Indonesia and travel domestically within the country.

**Participant Fee:** 370 € or IDR 6.660.000/month (additional cost per week 70 Euro/week/person or IDR 1.260.000). The payment should be paid in advance maximum 1 month (30 days) before the project started via online transfer through WISE Online transfer. The volunteer MUST transfer the money in RUPIAH currency

#### **DJMTV – 2510 JAN – DEC 25 SEMARANG BABY & TEEN ORPHANAGE CHIL/ORPHAN 1 VOL**

**Background:** The projects take place in Panti Asuhan Manarul Mabur Orphanage The project has around 80 children from new born baby to university students from different background and area of Indonesia. The orphanage is located in suburban area of Semarang, about 30 minutes from Semarang city. The orphanage has about 80 clients (age 5 months to 20 years old). They have around 20 babies (under 1 year old), 30 children ( 1 - 5 years old) and the rest age of schools (elementary, junior, senior high students). All of them stay at the orphanage. The clients supported by around 20 staffs who are mostly are family member of the orphanage owner. They lack of human resource to handle the children. So that they need volunteers to help for their daily tasks. Normally they are brought to orphanage by community or their own parents. They need to taking care of their friends as well as the orphanage. The orphanage educates them to be an independent through giving them on entrepreneur skills and an opportunity to practice their skills.

**Work:** The tasks of the volunteer will be taking care of the babies, taking care the kids, supervising the kids playing, helping making homeworks, teaching English, teaching kids / clients about hygiene, supervising the kids, organizing games, Taking kids on playgrounds, helping kids to do homework, monitor academic progress, and make sure kids complete their homework. Sanitation (helping kids in brushing teeth, shower, and personal hygiene). Volunteer also welcome to help cooking at kitchen to prepare the meals for the children

**Study theme:** The volunteers will be introduced to the Indonesian culture and customs in general, with a special focus on the local particularities. Some cultural visits are also foreseen.

**Leisure Time:** During free time, the volunteers will have the chance to visit and explore culture and tourism spot near the project.

**Accommodation:** The accommodation and food will be provided by a local host family or at dormitory (to be confirmed). The volunteer may have own or sharing room and the other facilities with other host family members. Facilities are simple and Indonesian style (no hot water, no washing machine).

**Location:** Java Island

**Terminal of arrival:** The meeting point for all volunteer MUST BE at Semarang city at Semarang International Airport or Semarang Tawang Train Station. Volunteer is NOT ALLOWED to buy flight ticket before getting the visa and get confirmation from the host organization.

**Special Requirements:** Hold a Visit Single Entry Visa for Volunteering type C-6 / B211A; Enjoy caring for children and getting to know to a new culture and language; Having experience of doing au pairs previously is point plus; Be in a good health;; No piercing on face, no visible tattoo, should have common hair style (no colorful, dreadlock). The volunteer should be open-minded, tolerant, creative, flexible, patient, respect the local customs and local's rule, sharing, special drive for children, willing to accept basic living condition in the project site, and be confidence. Never been found guilty in a criminal case in volunteer's home country or in another country. Strictly prohibited possess narcotics, marijuana, opium, stimulants or other drugs. Flexible vegetarian is still welcomed, BUT prefer NO STRICT vegetarian (vegan) in all projects. Please accept our apology that we are not open for volunteer with mentally disabilities and people with mobility and movement impairments such as limitation on physical functioning, blindness, deaf, epilepsy, sleep disorders etc.

**Health issues:** Unvaccinated travelers are now permitted to enter Indonesia and travel domestically within the country.

**Participant Fee:** 370 € or IDR 6.660.000/month (additional cost per week 70 Euro/week/person or IDR 1.260.000) The payment should be paid in advance maximum 1 month (30 days) before the project started via online transfer through WISE Online transfer. The volunteer MUST transfer the money in RUPIAH currency

#### **DJMTV – 2511 JAN – DEC 25 BALI BABY & TEEN ORPHANAGE CHIL/ORPHAN 1 VOL**

**Background:** The project takes place at Bali Baby Home (BBH) located in Gianyar Regency, Bali Island which is located about 30 km away from Denpasar City, capital of Bali Island Province. Bali Baby Home Foundation is a home for Babies and Pregnant Moms. The foundation provide care, raise, provide for all until the baby accepted back by their family, cared again by their biological mother. BBH s one of the real actions to save pregnant women and babies who are in danger. A sincerity from the founder who is unable to resist his desire to save as many pregnant women and babies as possible who are in danger, without thinking about getting any rewards or rewards. Everything is done for free, even though it only relies on its own income and donors. The orphanage currently has 23 babies (age 1 month to 2 years old). All of them stay at the orphanage. The babies supported by around 5 staffs / baby sitters. They still lack of human resource to handle the children. So that they need volunteers to help for their daily tasks. Normally they are brought to orphanage by community or their own parents. They need to taking care of their friends as well as the orphanage. All babies must be saved. Regardless in the future, whether the mother can take the baby back after being able to overcome the situation or not, BBH will happily return the child back to its biological mother. Because child custody will always be attached to and belong to the biological mother. However, if the biological mother does not want to accept the baby back, BBH will care for and raise it, taking care of all its needs from basic life, school, and all other needs until the child is able to determine his own life.

**Work:** The tasks of the volunteer will be taking care of the babies, taking care the kids, supervising the kids playing, helping making homeworks, teaching English, teaching kids / clients about hygiene, supervising the kids, organizing games, Taking kids on playgrounds, helping kids to do homework, monitor academic progress, and make sure kids complete their homework. Sanitation (helping kids in brushing teeth, shower, and personal hygiene). Volunteer also welcome to help cooking at kitchen to prepare the meals for the children

**Study theme:** The volunteers will be introduced to the Indonesian culture and customs in general, with a special focus on the local particularities. Some cultural visits are also foreseen.

**Leisure Time:** During free time, the volunteers will have the chance to visit and explore culture and tourism spot near the project.

**Accommodation:** The accommodation and food will be provided by a local host family or at dormitory (to be confirmed). The volunteer may have own or sharing room and the other facilities with other host family members. Facilities are simple and Indonesian style (no hot water, no washing machine).

**Location:** Sukawati Gianyar, Bali Island

**Terminal of arrival:** The meeting point for all volunteer MUST BE at Semarang city at Semarang International Airport or Semarang Tawang Train Station. Volunteer is NOT ALLOWED to buy flight ticket before getting the visa and get confirmation from the host organization.

**Special Requirements:** Hold a Visit Single Entry Visa for Volunteering type C-6 / B211A; Enjoy caring for children and getting to know to a new culture and language; Having experience of doing au pairs previously is point plus; Be in a good health; No piercing on face, no visible tattoo, should have common hair style (no colorful, dreadlock). The volunteer should be open-minded, tolerant, creative, flexible, patient, respect the local customs and local's rule, sharing, special drive for children, willing to accept basic living condition in the project site, and be confidence. Never been found guilty in a criminal case in volunteer's home country or in another country. Strictly prohibited possess



narcotics, marijuana, opium, stimulants or other drugs. Flexible vegetarian is still welcomed, BUT prefer NO STRICT vegetarian (vegan) in all projects. Please accept our apology that we are not open for volunteer with mentally disabilities and people with mobility and movement impairments such as limitation on physical functioning, blindness, deaf, epilepsy, sleep disorders etc.

**Health issues:** Unvaccinated travelers are now permitted to enter Indonesia and travel domestically within the country.

**Participant Fee:** 370 € or IDR 6.660.000/month (additional cost per week 70 Euro/week/person or IDR 1.260.000). The payment should be paid in advance maximum 1 month (30 days) before the project started via online transfer through WISE Online transfer. The volunteer MUST transfer the money in RUPIAH currency

**DJMTV – 2512 JAN - DEC 2025 LANGUAGE & CULTURE LANG/EDU/CULT 1 VOL**

**Background:** The project site will take place in the kindergarten, primary school, senior high school and university which has Japanese/ French /Korean / Mandarin / Arabic lesson. The university is located in urban areas while the high schools could be both in urban or rural area. Nowadays, learning foreign language is getting famous and wide spread taught in many schools in Indonesia. The schools and university support the students to create their confidence and maturity by doing interaction with foreign volunteers in order to get better understanding about different culture as well as knowing better foreign languages. Formal and non-formal foreign language teaching; Interactive learning activities for students; Education; introducing foreign culture & art.

**Work:** To organize and assist local foreign language teacher; To contribute to the organization of non formal work shops ; To organize games and entertaining activities for students; To contribute to other activities the school may punctually organize

**Study theme:** The volunteers will be introduced to the Indonesian culture and customs in general, with a special focus on the local particularities. Some cultural visits are also foreseen.

**Leisure Time:** During free time, the volunteers will have the chance to visit and explore culture and tourism spot near the project site.

**Accommodation:** The accommodation and food will be provided by a local host family or at dormitory (to be confirmed). The volunteer may have own or sharing room and the other facilities with other host family members. Facilities are simple and Indonesian style (no hot water, no washing machine).

**Location:** Java Island

**Terminal of arrival:** The meeting point for all volunteer MUST BE at Semarang city at Semarang International Airport or Semarang Tawang Train Station. Volunteer is NOT ALLOWED to buy flight ticket before getting the visa and get confirmation from the host organization.

**Special Requirements:** Hold a Visit Single Entry Visa for Volunteering type C-6 / B211A; **Native Japanese or not native but fluent in Japanese / Korean / Mandarin / Arabic.**; No piercing on face, no visible tattoo, should have common hair style (no colorful, dreadlock). The volunteer should be open-minded, tolerant, creative, flexible, patient, respect the local customs and local's rule, sharing, special drive for children, willing to accept basic living condition in the project site, and be confidence. Never been found guilty in a criminal case in volunteer's home country or in another country. Strictly prohibited possess narcotics, marijuana, opium, stimulants or other drugs. Flexible vegetarian is still welcomed, BUT prefer NO STRICT vegetarian (vegan) in all projects. Please accept our apology that we are not open for volunteer with mentally disabilities and people with mobility and movement impairments such as limitation on physical functioning, blindness, deaf, epilepsy, sleep disorders etc.

**Health issues:** Unvaccinated travelers are now permitted to enter Indonesia and travel domestically within the country.

**Participant Fee:** 370 € or IDR 6.660.000/month (additional cost per week 70 Euro/week/person or IDR 1.260.000). The payment should be paid in advance maximum 1 month (30 days) before the project started via online transfer through WISE Online transfer. The volunteer MUST transfer the money in RUPIAH currency

**DJMTV – 2513 JAN - DEC 2025 DEJAVATO OFFICE INTERNSHIP EDU/ADMIN 2 VOL**

**Background:** Dejavato Foundation works for voluntary service activities in Indonesia with various program such as short, mid and long term volunteer cooperating with international networks. Dejavato Foundation hosts and sends volunteers through the volunteering program ([www.dejavato.or.id](http://www.dejavato.or.id))

**Work:** The role of the volunteer will be assisting the staffs of Dejavato in organizing various activities such office work, visiting local partners, organizing seminars and other activities

**Study Theme:** The volunteers will be introduced to the Indonesian culture and customs in general, with a special focus on the local particularities. Some cultural visits are also foreseen.

**Leisure Time:** During free time, the volunteers will have the chance to visit tourism places nearby project sites.

**Accommodation:** The accommodation and food will be provided by host project. The volunteer will stay at local host family or dormitory (to be confirmed). Facilities are simple and Indonesian style (no hot water, no washing machine).

**Location:** Semarang, Central Java

**Terminal of arrival:** The meeting point for all volunteer MUST BE at Semarang city at Semarang International Airport or Semarang Tawang Train Station. Volunteer is NOT ALLOWED to buy flight ticket before getting the visa and get confirmation from the host organization.

**Special Requirements:** Hold a Visit Single Entry Visa for Volunteering type C-6 / B211A; Speak English (speak Indonesian is more welcome) accept the condition provided by Dejavato. The volunteer should be open-minded, tolerant, creative, flexible, patient, respect the local customs and local's rule, sharing, special drive for adolescent and youngsters, willing to accept basic living condition in the project site, and be confidence. The volunteer should be able to work with words/excel, able to work with Canva, video making/editing, familiar with social media (IG/FB/TikTok). Never been found guilty in a criminal case in volunteer's home country or in another country. Strictly prohibited possess narcotics, marijuana, opium, stimulants or other drugs. Flexible vegetarian is still welcomed, BUT prefer NO STRICT vegetarian (vegan) in all projects. Please accept our apology that we are not open for volunteer with mentaly disabilities and people with mobility and movement impairments such as limitation on physical functioning, blindness, deft, epilepsy, sleep disorders etc)

**Health issues:** Unvaccinated travelers are now permitted to enter Indonesia and travel domestically within the country.

**Participant Fee:** 370 € or IDR 6.660.000/month (additional cost per week 70 Euro/week/person or IDR 1.260.000) The payment should be paid in advance maximum 1 month (30 days) before the project started via online transfer through WISE Online transfer. The volunteer MUST transfer the money in RUPIAH currency

#### **DJMTV – 2514                      JAN - DEC 2025    COMMUNITY DEVELOPMENT                      SOC/CULT                      1 VOL**

**Background:** The Pusat Kegiatan Belajar Mengajar (Community Learning Activity Center), which is often abbreviated as PKBM, is a non-formal education unit. The PKBM is a place for various community learning activities aimed at empowering the potential to drive development in the social, economic and cultural fields. Programs held at PKBM can be very diverse and can also be unlimited, but must be in accordance with the conditions, potential and needs of the community where PKBM is located or said to be relevant, and the programs must be meaningful and useful. PKBM Ibu Hajar is located in Salam District, Magelang regency Central Java province about 60 km away from Semarang city. The PKBM was established in 2001 has programs include Equality Education (A, B and C), Literacy Education, Citizenship Education, Homemaking, and others.

The PKBM has some education level started from PAUD (elderly childhood 1-2 yo), kindergarten (3 – 5 yo) which has daily activities from Monday to Friday with around 70 students. While equality education A,B,C for high school ages (13 – 9 yo) and elderly held on Friday, Saturday and Sunday with around 150 students. Majority of students live in school neighborhood area. The students not only study from text book, but also informal education such as handicraft, games, sing a songs, and so on. Total of students in this school around 70 students from variety ages. The daily activities started in the morning at 08.00. For those students who take activities, after lunch will have some extracurricular such as singing and arts

**Work:** The role of the volunteer will be assisting local staffs and women in doing various non-formal activities; Assisting local teacher at non-formal education fields such as organizing English class for students; Assisting teacher at kindergarten of PKBM; Organizing sport activities with locals; Through this way will give the students have better understanding and to learn about other country and new knowledge.

**Study theme:** The volunteers will be introduced to the Indonesian culture and customs in general, with a special focus on the Javanese particularities. Some cultural visits are also foreseen.

**Leisure Time:** During free time, the volunteers will have the chance to visit and explore culture and tourism spot in Magelang, Central Java.

**Accommodation:** The accommodation and food will be provided by host project. The volunteer will stay at local host family or dormitory (to be confirmed). Facilities are simple and Indonesian style (no hot water, no washing machine).

**Location:** Magelang, Central Java

**Terminal of arrival:** The meeting point for all volunteer MUST BE at Semarang city at Semarang International Airport or Semarang Tawang Train Station. Volunteer is NOT ALLOWED to buy flight ticket before getting the visa and get confirmation from the host organization.

**Special Requirement:** Hold a Visit Single Entry Visa for Volunteering type C-6 / B211A; No piercing on face, no visible tattoo, should have common hair style (no colorful, dreadlock). The volunteer should be open-minded, tolerant, creative, flexible, patient, respect the local customs and local's rule, sharing , special drive for adolescent and youngsters, willing to accept basic living condition in the project site, and be confidence. Never been found guilty in a criminal case in volunteer's home country or in another country. Strictly prohibited possess narcotics, marijuana, opium, stimulants or other drugs. Flexible vegetarian is still welcomed, BUT prefer NO STRICT vegetarian (vegan) in all projects. Please accept our apology that we are not open for volunteer with mentaly disabilities and people with mobility and movement impairments such as limitation on physical functioning, blindness, deaf, epilepsy, sleep disorders etc)

**Health issues:** Unvaccinated travelers are now permitted to enter Indonesia and travel domestically within the country.

**Participant Fee:** 370 € or IDR 6.660.000/month (additional cost per week 70 Euro/week/person or IDR 1.260.000). The payment should be paid in advance maximum 1 month (30 days) before the project started via online transfer through WISE Online transfer. The volunteer MUST transfer the money in RUPIAH currency