

FIM CCI FORMATION OUEST NORMANDIE

“Socio-educational activities for young people”



CAMPUS 2

fim.fr



SEPTEMBER 2023
TO JUNE 2024

FIM
Accélérateur
de réussite.



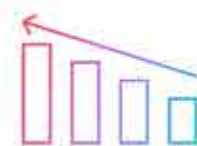


FIM CCI FORMATION is the training department of the West Normandy Chamber of Commerce and Industry. For over 40 years, we have been providing local training for people aged between 15 and 30, mainly from our region. They are trained in a wide range of fields: international, tourism, hospitality, management, web and digital. 80% of our long courses are apprenticeships.

Each year, we train more than 7,000 people: nearly 1,400 apprentices, +4,000 employees and 1,500 partner companies.



4 CAMPUS



88 % success rate in 2022



87 % satisfaction rate in 2021



R. Provost

Director FIM CCI FORMATION
Director APPRENTICESHIP



F. Besnard

Mobility referent and tutor



S. Lhonneur

Socio-educational referent



I. Pihuit

Director CAMPUS 2
and tutor



J. Leudet

Linguistique referent



Here, we work together. Eventhough you're the only long term volunteer at the moment, you'll be in contact with other volunteers in the department.

And don't worry, as a team, we count on each other and we'll be there to help you in your volunteering.

ACTIVITIES WE DO



FIM CCI FORMATION Ouest Normandie is one of the largest training centres for apprentices, students, employees and jobseekers.

Because of our values and our commitment to young people and their families, as well as to local businesses, we have a duty to support them in all aspects of daily life, now and in the future.

As part of their training programme, we encourage young people to take part in social activities and to take numerous initiatives in the fields of citizenship, solidarity (charitable actions, for example) and sustainable development.

Furthermore, as an Erasmus+ charter holder and a player in the movil'app scheme, we are committed to respecting the main principles and developing initiatives in this area.



What will you Do ?

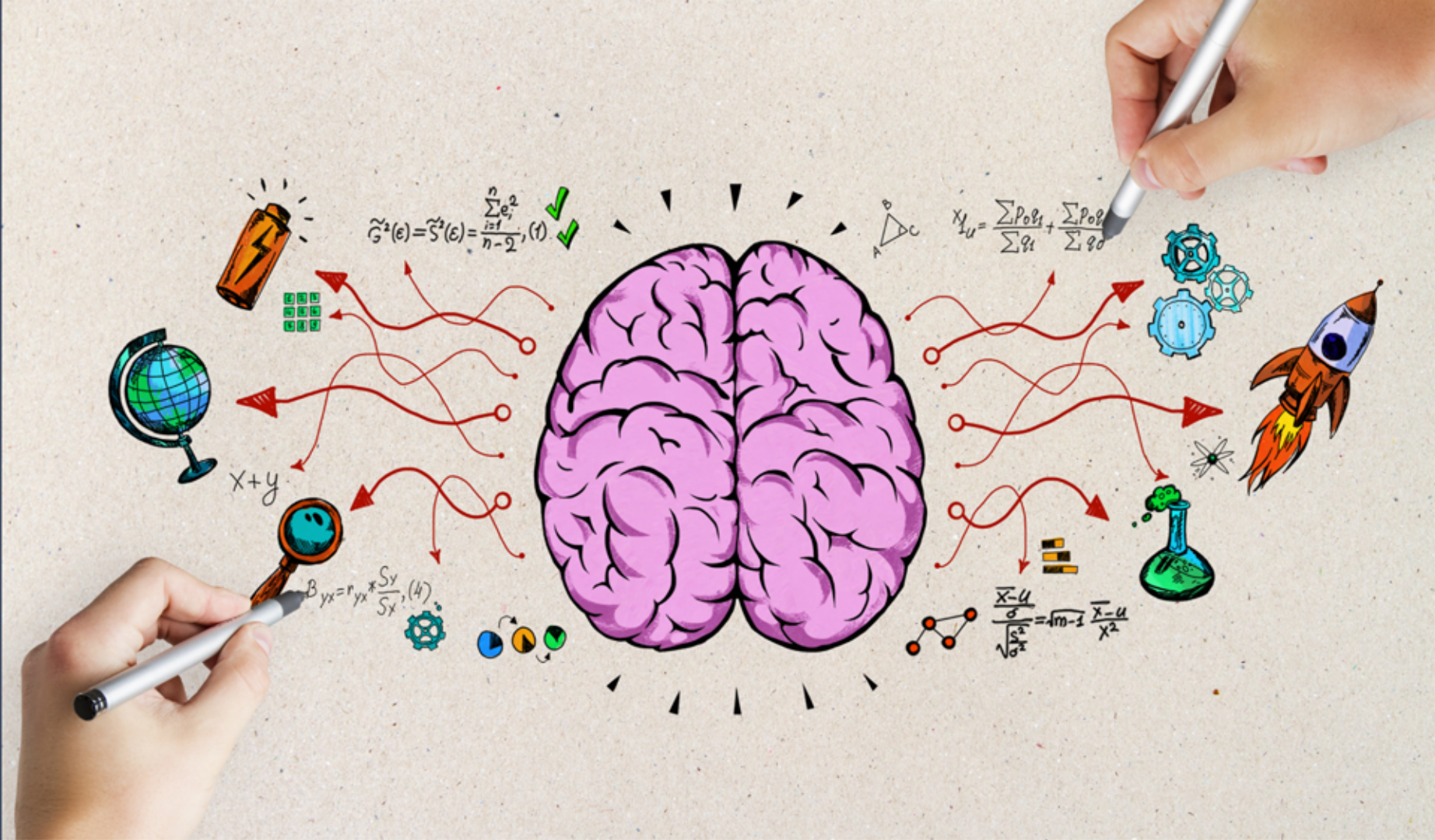


01. Main missions

- ✓ Participate in the organisation and running of socio-educational projects focusing on health, citizenship, sustainable development, diversity and mobility.
- ✓ Propose, organise and lead socio-educational projects in conjunction with the teams.
- ✓ Create links and encourage cohesion between young people, in particular by helping to integrate groups as soon as they start the new school year
- ✓ Raise awareness and involve the public and institutional partners in the projects
Create, recreate or maintain links

02. Personal missions

- ✓ Implement one of your personal projects (combating discrimination, sustainable development, distributing meals to students in need, etc.) with the young people at our school.
They can also be involved in this project.
- ✓ Participate in workshops (e.g. chef d'œuvre workshops for apprentices under 18 on campus 2) and student entrepreneurship projects (e.g. business creation project for students and apprentices at the Normandy School of Management and Business) by contributing your personal experience.
- ✓ Encourage international mobility among our students.



Working in a team

You're easy to talk to. So much the better!

Initially, you'll be working with teams on actions to be implemented for the benefit of others and the community. You'll then be asked to lead working groups yourself.

You'll need to be a good listener, showing empathy and openness to appreciate needs and act accordingly.

Developing skills

By coming to our campus and working with our teams and learners, you will be able to acquire skills that will be useful both personally and professionally.

Share your experience

You will be in direct contact with our young people and help them to open up to the world.

You will take part in meetings between local European volunteers.





Saint Lô

Saint-Lô is a town in Normandy. It is the 2nd largest town in the Manche department after Cherbourg-en-Cotentin, with over 20,000 inhabitants. The town is attracting an increasing number of students thanks to its local dynamism, its network of associations, particularly sports associations, its economic and tourist appeal, and its cultural and artistic development. Two music festivals are held in the heart of the town : Les Rendez-Vous Soniques et les Hétéroclites.



To go around La Manche department there are :



The biggest city around is Caen, 1h00mn by train, Paris is 3h45 away by train, 313km from the organisation.





Food and pocket money

You will receive €10 a day for food and €7 pocket money.



Transportation

You will be lent an electric bicycle. Bus transport is also available. A driving licence is excellent, but not compulsory





Your accommodation will be right in the centre of Saint Lô, close to all amenities. Your accommodation will be paid for.

WHAT YOU WILL HAVE



Your working environment

You will be supervised by two tutors who you can call on regularly. All the teams will be at your disposal to help you put your projects into practice.

You will be provided with IT equipment, a workspace and access to common areas (break rooms, meeting rooms, etc.) belonging to the campus staff.

Training

If you express the need, you will be allowed to follow training courses related to your activities and personal projects.

You will be given French lessons and, at the end of your assignment, you will have the opportunity to take the DELF certification (assessment of your French language skills).



Vous souhaitez relever le défi ?

If you are ready to apply,
please fill the form :

<https://forms.gle/uz3vdeivYw7Vzj7M7>



Anne Lalande

anne.lalande@normandie.cci.fr

FIM CCI Formation Ouest Normandie
170 rue de Lysette DARSONVAL
50000 SAINT LO



SEE YOU
SOON