

**VOULEZ-VOUS  
PARLER  
AVEC MOI?**



# MEET THE WORLD IN FRANCE

Experience the magic of France with KLF. For over 20 years, we've helped thousands of students master French and create unforgettable memories.

Imagine sipping wine in Bordeaux, savoring croissants in Toulouse, or skiing in the Alps. With KLF, we can make all these dreams a reality. Our expert teachers, tailored courses, and immersive experiences will transform you into a fluent French speaker.

Are you ready to embark on your French journey?  
Join KLF today!



**6 450**  
students  
every year

**120**  
different  
nationalities  
among our  
students

**100 +**  
cultural  
activities in  
France

**12**  
students  
per class  
on average

**A1 to C2**  
French  
exams

**5**  
destinations

**95%**  
satisfaction  
rate

## HIGH STANDARDS IN OUR FRENCH SCHOOLS



At KLF, we believe in the power of unity to achieve excellence. With decades of experience in top-tier French language education, each of our schools contributes to creating the best learning environment.

Our secret sauce? A shared syllabus and unified quality standards across all locations.

Each KLF school brings its own unique identity and local flair, enriching our community and adding flavor to your learning journey.

Join us and become part of a vibrant network dedicated to helping you master French with top-notch education and a sprinkle of local charm.







# THE STARTING POINT OF YOUR FRENCH LANGUAGE JOURNEY !



**ANNECY | BORDEAUX | LYON | MONTPELLIER | TOULOUSE**





# ANNECY

ANNECY | BORDEAUX | LYON | MONTPELLIER | TOULOUSE





Founded in 1992, IFALPES isn't just a French language school—it's your gateway to an unforgettable experience in the heart of the French Alps and Annecy, known as the «Little Venice of the Alps.»

Just a 10-minute stroll from the stunning Lake Annecy, we are a vibrant and multicultural learning hub. At IFALPES, expect a warm welcome and a cozy atmosphere where students from around the globe mingle, learn, and dive into French language and culture.

Enjoy dynamic teaching methods, top-notch native instructors, and our official TCF-certified examination centre.

- General Courses**
- Exam Preparation**
- Private Courses**
- Group programs**
- Junior Summer courses**
- French Exam : TCF**



**50**  
nationalities

**700**  
students per  
year

**95%**  
satisfaction  
rate

since  
**1992**





## Explore the enchanting "Little Venice of the Alps"!

Discover Annecy, where mountains meet magic. This charming town boasts crystal-clear lakes, stunning canals, and breathtaking scenery. Enjoy water sports, explore historic streets, savor local cuisine, or hit the slopes. Your Alpine adventure starts here.



## Annecy must-sees

- Lake side walk
- Old town
- Chateau d'Annecy
- Palais de l'île
- Old Hotel de ville
- Pont des amours
- Market
- Fondue/Tartiflette
- Mont Blanc











# BORDEAUX

**ANNECY | BORDEAUX | LYON | MONTPELLIER | TOULOUSE**





**Newdeal**  
Institut de Français

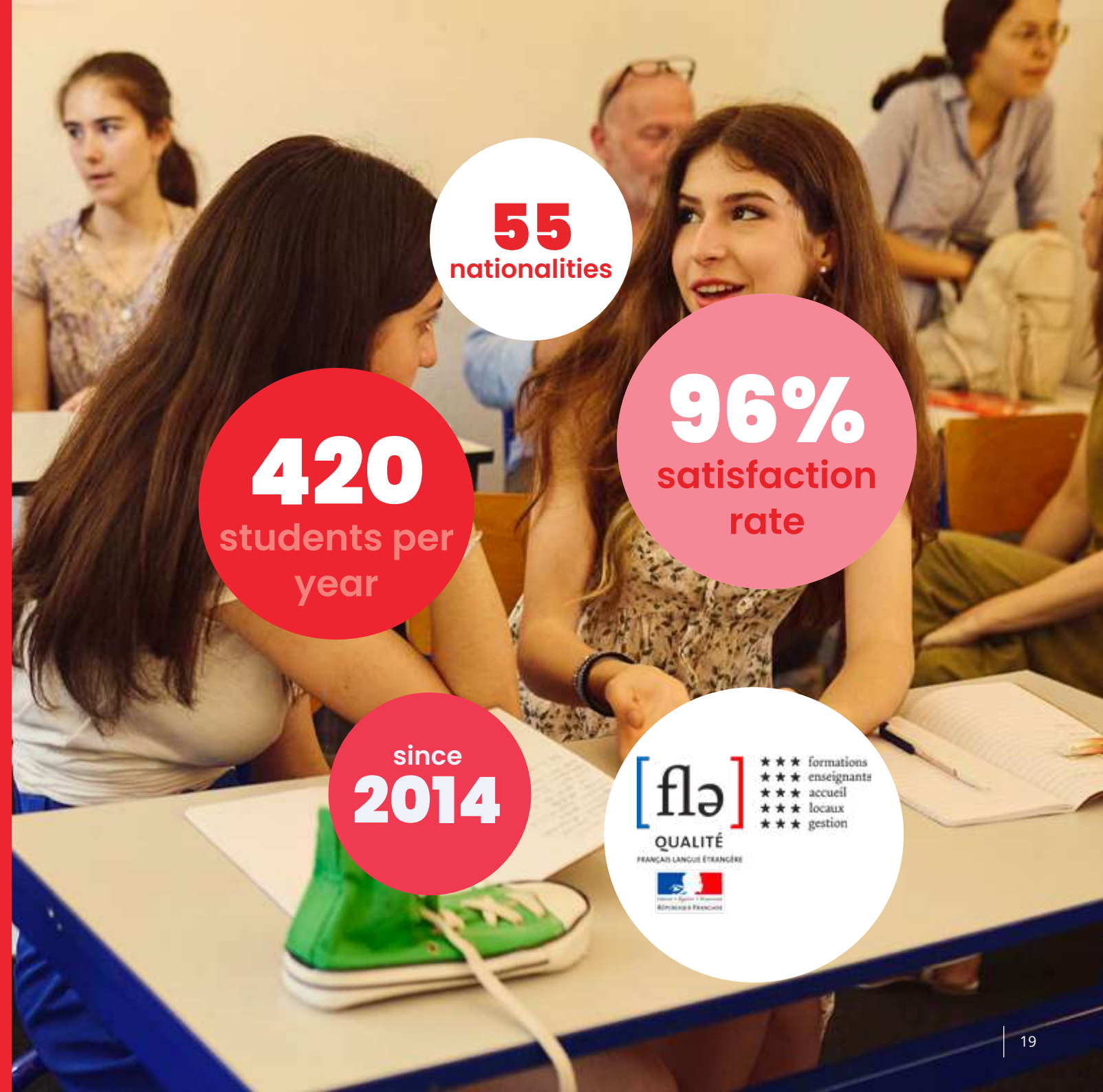
Our renovated school, just minutes from the historic center, offers a welcoming environment for international students.

Experience dynamic teaching, cultural activities, and personalized support from qualified native teachers at Newdeal.

Immerse yourself in Bordeaux's lively international setting as you master the French language.

Join us and explore Bordeaux in style!

**General French Courses**  
**French Exam Preparation**  
**Private Courses**  
**Au Pair Programme**  
**Group programs**  
**Junior Summer courses**  
**Exams : TCF / DELF & DALF / TEF**



**55**  
nationalities

**420**  
students per  
year

**96%**  
satisfaction  
rate

since  
**2014**





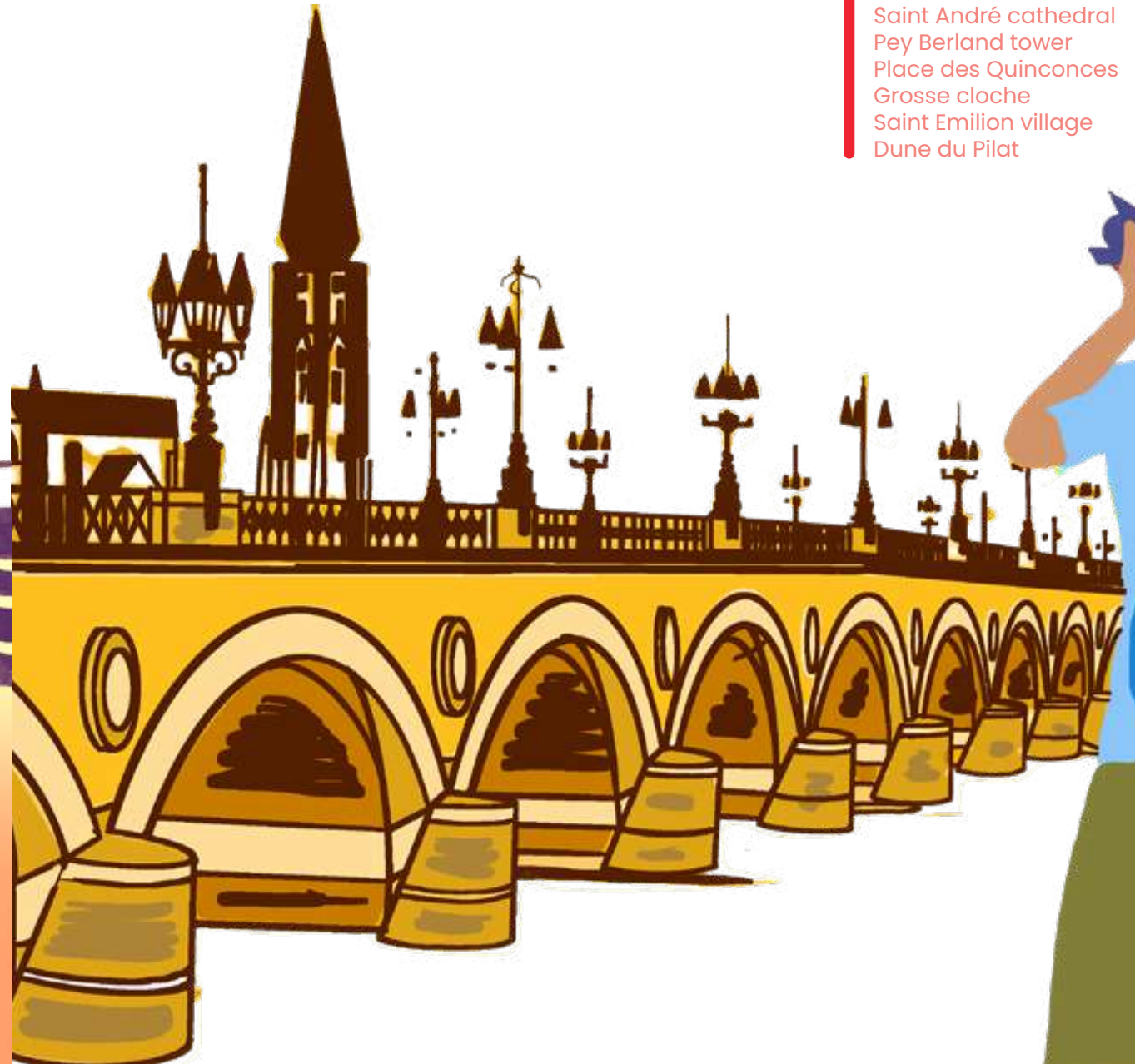
## Bordeaux: French elegance and Wine

Discover Bordeaux, a UNESCO gem blending history and modern flair. Savor world-class wines, explore historic monuments, and indulge in gourmet delights. From surfing to city life, Bordeaux offers it all. Experience the epitome of French charm.



## Bordeaux must-sees

- Pont de pierre
- Cité du Vin
- Vineyards
- Place de la Bourse & miroir d'eau
- Grand Théâtre
- Saint André cathedral
- Pey Berland tower
- Place des Quinconces
- Grosse cloche
- Saint Emilion village
- Dune du Pilat







## NEWDEAL INSTITUT

74 Av. Thiers - 33100 Bordeaux - France

+33 (0)9 53 03 16 20

[contact@newdealinstitut.com](mailto:contact@newdealinstitut.com)

[français.newdealinstitut.com](http://français.newdealinstitut.com)







# LYON

**ANNECY | BORDEAUX | LYON | MONTPELLIER | TOULOUSE**





Learn French in Lyon, the "Gastronomie Capital of the World"! Our school offers a vibrant, multicultural learning environment near the historic centre and Parc de la Tête d'Or.

Experience dynamic teaching, engaging cultural activities, and personalized support from experienced teachers at Lyon Bleu. Immerse yourself in Lyon's lively international setting and master French in style.

Join us for an enriching language adventure!

- General Courses
- Exam Preparation
- Private Courses
- Evening Courses
- Group programs
- French Exam : TCF



**80**  
nationalities

**1 500**  
students per  
year

**95%**  
satisfaction  
rate

since  
**1999**





## Experience Lyon, the vibrant heart of France!

Discover Lyon, a dynamic historic city nestled between rivers. Immerse yourself in its heritage, culture, and world-class cuisine. From charming streets to vibrant nightlife, Lyon offers unforgettable experiences.



### Lyon must-sees

- Basilique de Fourvière
- City heights
- Place des Terreaux
- Hotel Dieu
- Place Bellecour
- Parc de la tête d'Or and its zoo
- Gallo-Roman theatre
- Church of St Jean
- Museum of Confluences
- Bouchons Lyonnais







## LYON BLEU INTERNATIONAL

82, rue Duguesclin - 69006 Lyon - France

+33 (0)4 37 48 00 26

info@lyon-bleu.fr

lyon-bleu.com







# MONTPELLIER

ANNECY | BORDEAUX | LYON | MONTPELLIER | TOULOUSE



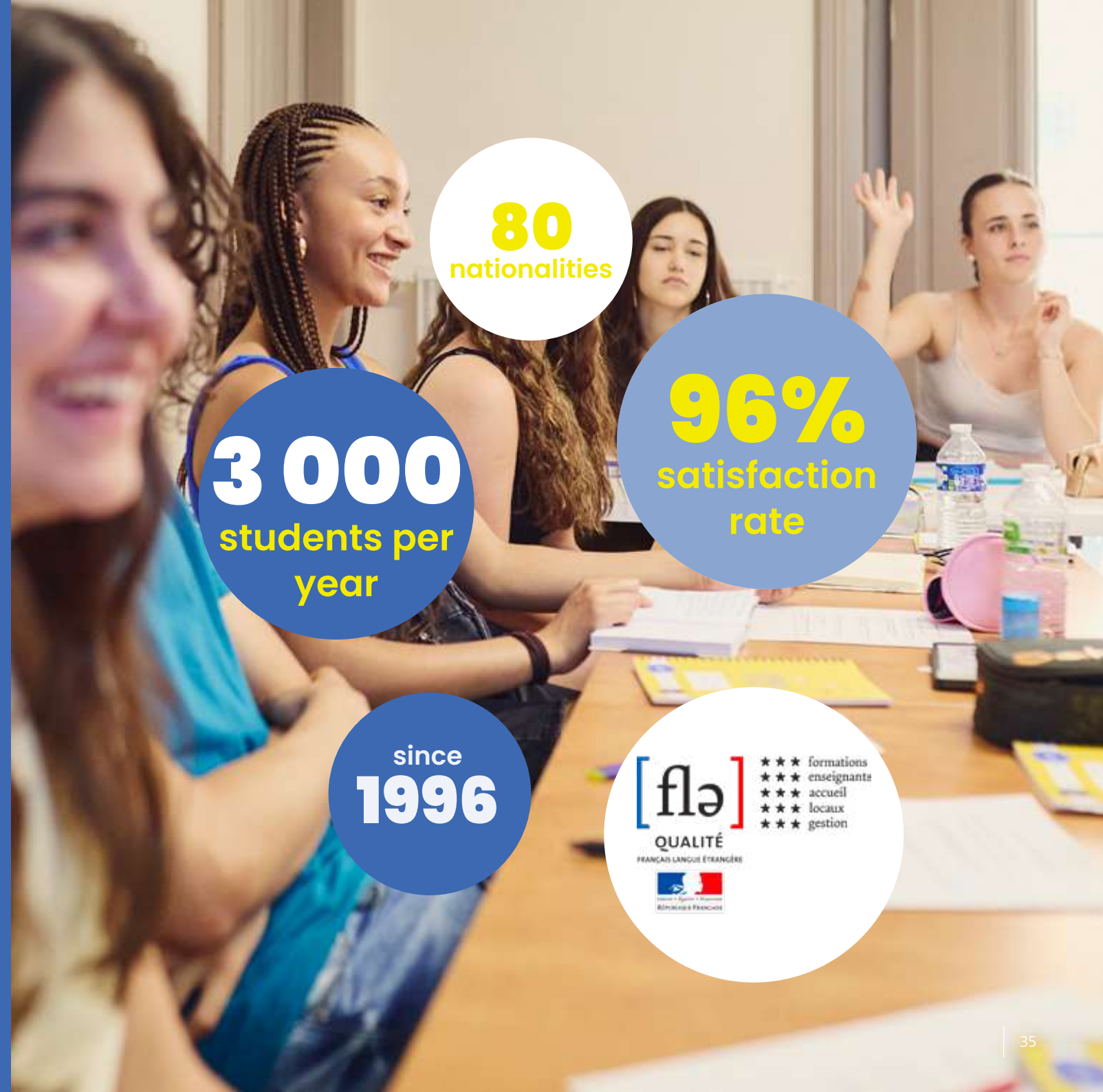


Located in Montpellier's historic heart, LSF has been a leader in French language education for nearly 30 years. Our modern classrooms, resource centre, and private garden provide a comfortable and stimulating environment.

Experience dedicated teachers who create a friendly and supportive atmosphere for your success. Join 3,000 students from 80 countries and immerse yourself in LSF's vibrant, multicultural ambience—where academic excellence meets cultural immersion.

Join us in Montpellier for a language journey like no other!

- General Courses
- Exam Preparation
- Private Courses
- Group programs
- Junior Summer Courses
- French Exam : TEF



**80**  
nationalities

**3 000**  
students per  
year

**96%**  
satisfaction  
rate

since  
**1996**





## Uncover Montpellier's Mediterranean magic.

Explore a vibrant city bathed in sunshine. Discover historic streets, savor fresh seafood, and soak up the Mediterranean atmosphere. From lively beaches to cultural treasures, Montpellier offers something for everyone.



## Montpellier must-sees

- St Anne
- St Roch
- St Pierre
- Faculty of Medicine
- Plant Garden
- Peyrou
- Arc de Triomphe
- Place de la Comédie
- Beaches
- Vineyards







**LSF**

6, rue Foch - 34000 Montpellier - France  
+33 (0)4 67 91 31 60  
contact@lsf-france.com  
lsf-france.com







# TOULOUSE

**ANNECY | BORDEAUX | LYON | MONTPELLIER | TOULOUSE**





Located in the vibrant heart of Toulouse, Langue Onze offers a dynamic environment for learning French. Since 1991, we've welcomed over 1,000 international students annually to our modern classrooms.

Our passionate native speakers ensure a personalized learning journey. Enjoy a friendly, multicultural atmosphere with immersive accommodation and a rich cultural program.

Join Langue Onze and experience the festive ambiance of the Pink City while mastering French!

- General Courses
- Exam Preparation
- Private Courses
- Group programs
- Junior Summer Courses
- Exams : TCF / DELF & DALF



**60**  
nationalities

**1100**  
students per  
year

**95%**  
satisfaction  
rate

since  
**1991**





## Discover Toulouse: The Charming Pink City

Immerse yourself in the heart of France. Explore a vibrant city with a rich history, world-class innovation, and delicious cuisine. From iconic landmarks to modern marvels, Toulouse offers unforgettable experiences.



## Toulouse must-sees

- Augustins Museum Rue des Arts
- Cathedral
- Place de la Trinité
- Capitole
- Pont Neuf
- Dôme de la Grave
- Quais de la Viguerie
- Jardin Raymond IV
- Pont Saint-Pierre
- Basilique St-Sernin
- Japanese garden
- Cité de l'Espace







**LANGUE ONZE**

10, rue des Arts - 31000 Toulouse - France  
+33 (0)5 61 62 54 58  
info@langueonze.com  
langueonze.com







**Say “OUI” to  
KEEP  
LEARNING  
FRENCH**



# CHOOSE YOUR FRENCH COURSE:

## GENERAL FRENCH

**Standard French**  
20 lessons / week

**Intensive French**  
26 lessons / week

**Intensive Premium French**  
26 lessons + 4 private / week

**Super intensive French**  
40 lessons / week

**Intensive Bildungsurlaub**  
30 or 40 lessons / week

## CERTIFICATIONS COURSES

**DELFL / DALF Preparation Premium**  
26 lessons + 4 private / week

**DELFB2 Preparation**  
15 lessons / week with Langue Onze Toulouse

**DALFC1 Preparation**  
20 lessons / week with Langue Onze Toulouse

## PRIVATE COURSES

6 or 12 lessons / week packs

## FRENCH FOR SPECIFIC PURPOSES

**Evening online courses**  
4 lessons / week

**Au pair programme**  
16 lessons / week with Newdeal Institut Bordeaux

## GROUPS AND MINI STAYS

Customized French programs for schools and universities groups

## FRENCH CAMPS FOR JUNIORS

All included summer programs for kids





# YOUR DREAM STUDENT HOME, OUR COMMITMENT



## YOUR HOME AWAY FROM HOME



### HOST FAMILY

Live the true French art de vivre with meticulously selected French families.



### STUDENT RESIDENCE

Be independent throughout your stay.



### PRIVATE APARTMENTS

Enjoy independence and a higher level of comfort.



### SHARED ACCOMMODATION

Shared accommodation for an enjoyable international experience.



### APART' HOTEL

Benefit from hotel-style service in a centrally located studio.



### OTHER OPTIONS

Other types of accommodation available, please contact us.  
(youth hostels, hotels, etc.)











1, place Niki de Saint-Phalle  
34070 Montpellier - France  
[contact@klf.fr](mailto:contact@klf.fr) / [agent@klf.fr](mailto:agent@klf.fr)

**klf.fr**

